

QUOTE

"The only good in pretending is the fun we get out of fooling ourselves that we fool somebody."  
—Booth Tarkington.

# The Chelsea Standard

25¢  
per copy

ONE HUNDRED-TWELFTH YEAR—No. 51

CHELSEA, MICHIGAN, TUESDAY, JUNE 9, 1981

18 Pages This Week



**ST. LOUIS DONATION:** The students of St. Louis School for Exceptional Boys were given a total of \$1,545, collected from the Chelsea Knights of Columbus annual Tootsie Roll Drive. Making the check presentation to Brother Dean is, second from left, Howard Zeck, Grand Knight of the Ypsilanti Alfred E. Walters Council No. 3230. On

hand for the occasion were, left to right, Father Joseph Zeck, Brother Dean, Sister Sally SSG., Mildred Eeles, Sue Blakely and Georgeann Grant. According to Zeck, it is important for the residents of Chelsea to be made aware of the fact that money collected from them stayed within the area.

## Summer Band Program Slated

Once again, the Chelsea School District will offer both a beginning band program and a summer band program during the summer months. Each beginning class will meet twice weekly for one hour of instruction during a six week period which gets underway Monday, June 15 and runs through July 23. Summer band students in the 7th grade will meet four days a week, Monday through Thursday, at 9 a.m.; 8th graders will meet at 9 a.m. on the same days. All classes will meet at Beach Middle school.

The registration fee for the six-week term will be \$15 or \$2.50 per week, payable at the first class meeting. Checks should be made payable to the Chelsea School District.

The beginners class schedule is as follows:

Cornets A, Monday and Wednesday, 8 a.m.; Cornets B, Tuesday and Thursday, 8 a.m.

Trombone, Monday and Wednesday, 9 a.m.; French Horn, Tuesday and Thursday, 9 a.m.

Percussion and Flute A and B, Monday and Wednesday, 10 a.m.;

Tenor Saxophone, Tuesday and Thursday, 10 a.m.

Alto Saxophone and Clarinet A, Monday and Wednesday, 11 a.m.; Oboe and Clarinet B, Tuesday and Thursday, 11 a.m.

All beginning flute, clarinet (Continued on page three)

## Spaulding Agency Elects New Board Members, Officers

At the annual meeting of the Board of Directors of Spaulding for Children held last month, one board member and a full slate of new officers were elected for the non-profit adoption organization.

The new member of the Board of Directors is Richard Letscher, a certified life underwriter from Bloomfield Hills. New officers named to the four available posts for the 1981-82 year include psychiatrist Dr. Harold Lockett, president; Mary Meade Fuger of Jackson, vice-president; Ann Feeny of Chelsea, secretary; and Mary Ann Coltre, also of Chelsea, treasurer.

## Waterloo Nature Center Day Camp Has Openings

Time is running out for parents to enroll their children in the Waterloo Nature Center Day Camp. Openings still exist in each of the three sessions, however parents are encouraged to enroll now. The following week-long sessions will be running during the summer: June 22-24, six- and seven-year-olds; July 20-24, eight-through 10-year-olds; and Aug. 17-21, 11 through 14-year-olds.

Each camp will be tailored to a specific age group and will consist of daily themes on topics such as Native Americans, Michigan Mammals, Plant Life, Birds, Insects and Geology. Daily activities will incorporate hands-on experiences and constructive projects making learning an enjoyable experience for the children. Depending on topics studied, the children may learn how to start an insect collection, build a glacier, prepare some Native American food, or make a plaster cast of animal tracks.

Fees for the week-long sessions are \$20 for members and \$25 for non-members. To register your child or if you desire further information call the Nature Center at 475-8069, Tuesday through

Thursday, 9 a.m. to 3 p.m. or Emilie Polens at 475-7840 or Carol Strahler at 475-9444.

## Barn Dance Scheduled For June 20

Saturday, June 20 is the date set for old-fashioned fun as the annual "Old Fashioned Barn Dance" benefit is held at the Charles Trinkle farm, 9631 Trinkle Rd., Dexter.

Music, as in the past, will be presented by the Luke Schaible Band for square and round dancing from 9 p.m. to 2 a.m.

Refreshments and set-ups will be available for purchase together with German sausage, hot dogs, popcorn and pop.

The dance is again sponsored by the Lima Liberty Belles and the Lima Brushkateers, a chapter group from the Dexter Sesquicentennial of 1973. All proceeds will go to the Special Education departments in the Chelsea and Dexter schools and High Point Center.

Tickets may be purchased in advance at a savings at area businesses including McLeod's, Royal Hair Fashions, Bouillon Sales and Service and the Captains Table in Dexter; Vogel's, Foster's, Heydlauff's and McCalla Feeds in Chelsea; Gambles in Manchester and Fran Coy Hairstyles in Ann Arbor.

## Sports Physical Exams Will Be Given Wednesday

Sports physicals for Chelsea School District students who will be entering grades seven through 12 in the fall will be held on Wednesday, June 10.

These physicals will be performed at the Family Practice Center, 775 S. Main St. and will include physical examination, weight, blood pressure, vision screening and urine to be checked for protein and sugar levels.

The physicals will be done on the following schedule. Those whose last names begin with A through E should report at 2 p.m.; F through J, 2:30; K through O, 3 p.m.; P through T, 3:30 p.m.; U through Z, 4 p.m.

## UAW Local 437 Elects Officers

Chelsea UAW Local 437 held elections for officers on Friday, May 22. The following week, a run-off was held to determine officers for the 1981-82 year.

Persons elected to the union posts include Harold Salyer, president; Jeral Whitaker, vice-president; Mary Balze, recording secretary; Norm Farley, financial secretary; A. J. Hale, Bruce Russell, Don Kaiser, trustees; James Taylor, guide; and Ernie Push, sergeant-at-arms.

## Commencement Slated Sunday Afternoon for High School Seniors

At 3 p.m. Sunday, June 14, the 1981 graduating class of Chelsea High school will march onto the CHS athletic field to the traditional strains of Edward Elgar's "Pomp and Circumstance." Within hours, the nearly 200 seniors will end their high school careers. Thereafter, the graduates will remember their senior year as they listen to their class song, "Best of Times," or recall their class motto, "Yesterday's dreams, today's hope, tomorrow's memories," and sponsor Bill Bainton.

Commencement ceremonies will begin as the Rev. Frank Glebel of Our Savior Lutheran church offers the invocation. Thereafter, members of the graduating class will sing the

Chelsea High school Alma Mater accompanied by the high school orchestra. The Contemporaries will follow with "There's An Answer."

Class vice-president Nancy Heller will present a commencement speech entitled "Behind Every Cloud There's A Rainbow" followed by class president Kenneth Elliot's topic "The Way We Were."

The orchestra will present a rendition of Tchaikovsky's "1812 Overture" followed by the certification of graduates by Superintendent of Schools Raymond Van Meer and the presen-

tation of graduates by Principal John Williams.

Diplomas will be distributed to the graduates by Ann Feeny, Earl Heller, Arthur Dils, James Stirling, Dale Schumann, George Prinzing, Patrick Wade, Clare Warren, Martin Tobin and Robert Benedict.

Faculty escorts will include Mrs. Beverly Martin, Mrs. Marian Williams, Stephen Leith and Patrick Wade.

Ceremonies will conclude with the benediction offered by the Rev. Geibel followed by the recessional of graduates to "Pomp and Circumstance."

## Firemen Assist on Six Calls

Chelsea Fire Department made a total of six runs last week, regarding two fires and five rescues.

Beginning Friday, May 29 Chelsea firemen were dispatched to the scene of a telephone pole fire, located at Old US-12 and Pierce Rd. This call was received at 6:22 p.m.

Saturday, May 30, a rescue call was phoned in at 10:30 a.m. from a location on Clear Lake Rd.; it was cancelled at 10:40 a.m.

A possible accident was reported at 7:48 p.m. Sunday, May 31 at I-94 at Notten and Kalmbach Rds. This call was cancelled at 7:53 p.m.

A fatal motorcycle accident was handled Friday, June 5 at Fletcher Rd. and I-94. This personal injury accident, the call for which was received at 6:05 p.m., resulted in the death of Robert J. Allan, 31, of Chelsea.

On Saturday, June 6, a personal injury accident occurred on Old US-12, east of Freer Rd. This call was received at 5:44 a.m.

Later Saturday, a brush fire was reported at Bush Rd. and the Waterloo Nature Center. Firemen answered this call at 7:05 p.m.

## 'South Pacific' Cast Begins Rehearsals

The cast of the Chelsea Players' upcoming summer production of "South Pacific" held its first read through last week at the Chelsea Methodist church.

When the men's chorus sang a rousing "There Ain't Nothin' Like A Dame," the energy in the room could be felt. Sue Williams of Chelsea read the lead part of Nellie Forbush with natural vitality and zest.

Joe Diedrich, also from Chelsea, has the male lead of Emile de Becque. After he sang a beautiful rendition of "Some Enchanting Evening," the entire cast burst into spontaneous applause.

Luther Billis, the resident wheeler dealer, is being portrayed by Ric Foytik of Chelsea. He read through the part with true comedic flair. Ruth Kenny of Ann Arbor stars as the street-wise native, Bloody Mary. She sang the haunting "Bali H'ai" in a strong, clear voice.

Lt. Cable will be played by Doug Beaumont of Chelsea. He sang the romantic "Younger Than Springtime" beautifully. Liat, the young native girl with whom Cable falls in love, is portrayed by Chelsea's Heidi Van Blaricum. Her lovely, delicate features and natural

(Continued on page four)

## Alcohol/Drug Awareness Program Presented

As parents, how much are you aware of the alcohol and drugs in our school system? Ask your children!

The Western Washtenaw Community Council, Family Task Group, a community organization, provided an Alcohol/Drug Awareness Program for the fifth graders at North and South schools last week. Jo Ann Carruthers, chairperson of the Family Task Group, and Sheriff Minick initiated and im-

plemented this program which included a film on drugs and discussion led by Detective Keshishian of the Washtenaw County Sheriff Department and Chief of Police Aello displayed and discussed samples of alcohol, drugs and related equipment with a question/answer period after.

This program was well received by the school principals, teachers and participating

(Continued on page two)

## Mark Porath Receives Scouting's Highest Award

Fourteen-year-old Mark Porath was given the honor of Eagle Scout, the highest Boy Scout award, Sunday, June 7 at the First United Methodist church. Ceremonies got underway at 1:30 p.m.

Porath, who will be a Chelsea High school sophomore this fall, has been a Boy Scout for the past four years. He is a member of Troop 455 under the leadership of Scoutmaster Richard Cook. According to Porath, only one percent of all Boy Scouts ever attain the Eagle award.

For his service project, Porath organized the Golden Olympics held last July 23 at the Chelsea United Methodist Retirement Home. Residents of the home participated in assorted board games and a luncheon followed their activities.

In addition to that, Porath met all other Eagle Scout requirements including the accumulation of 21 merit badges and eight skill awards, ranging from personal management and life saving to environmental science and swimming.

In addition to his Eagle honors, Porath was the recipient of the God and Church award after having devoted many hours to both his church and community.

He is the son of Mr. and Mrs. Warren Porath, Jr. of Chelsea.

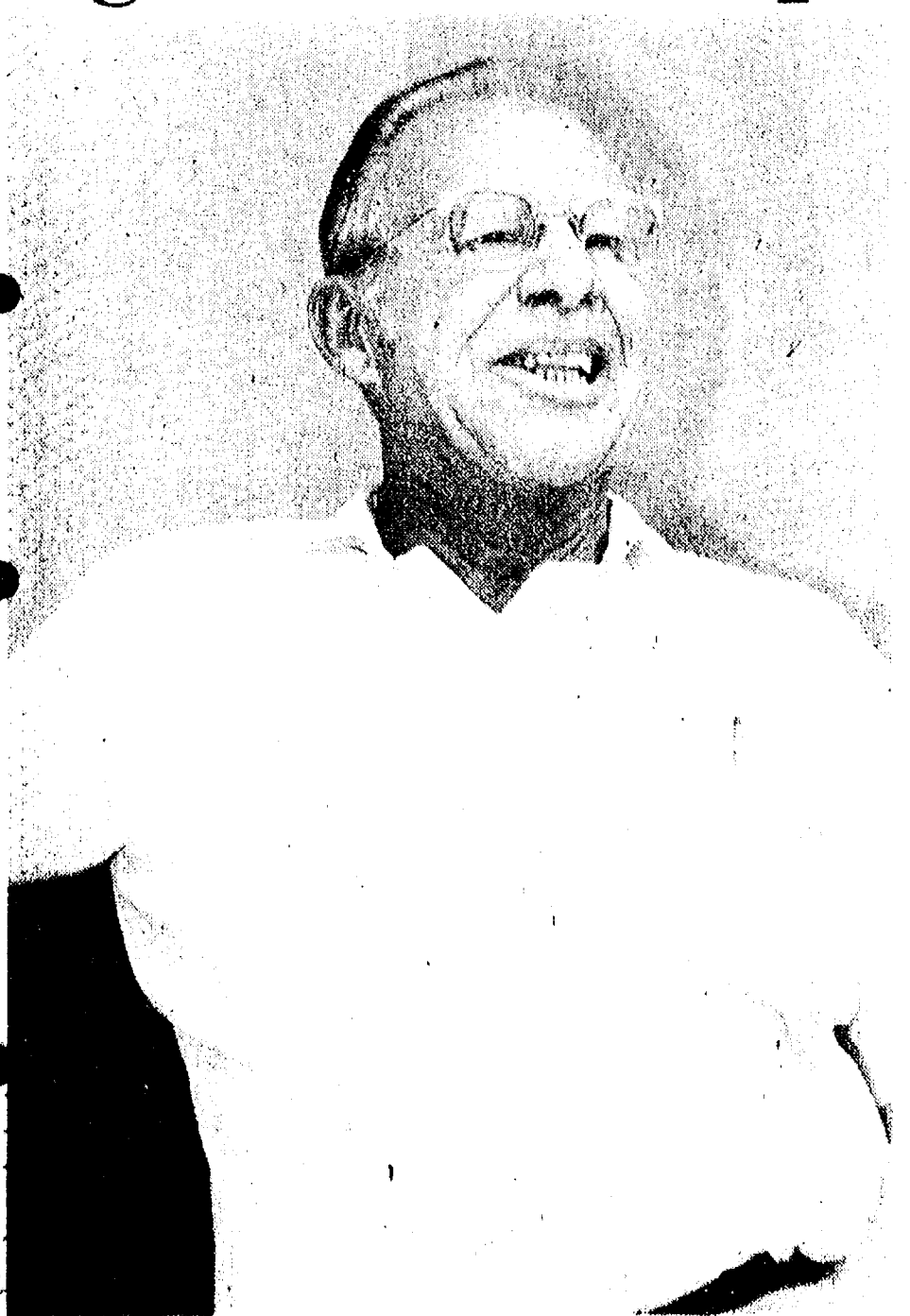
## McKune Library Adds New Publications

McKune Memorial Library has added two publications to its list of periodicals. These two include The Wall Street Journal and Fortune magazine.



**EAGLE SCOUT HONORS** were bestowed upon Mark Warren Porath, Sunday, June 8 at the First United Methodist church on Park St. A Boy Scout for four years, Porath, age 14, accumulated a total of 21 merit badges and skill awards to attain the highest of Boy Scout honors. For his service project, Porath organized the Golden Olympics, held last July at the Chelsea United Methodist Retirement Home.

## Harold Bable Retiring As Light & Water Superintendent



**REFLECTING ON HIS 25 YEARS** with the Village of Chelsea, Harold Bable, Chelsea's Electric and Water Superintendent since 1957, retired on his 62nd birthday, Friday, June 5. Through the years, Bable was responsible for a number of major accomplishments including the rebuilding of the present electrical system.

After 25 years in the Electric and Water Department of the Village of Chelsea, Harold Bable retired on his 62nd birthday Friday, June 5 from his position as electric and water superintendent.

Born and raised in Jackson, Bable began his job in Chelsea in March 1957. He was hired as a lineman under Superintendent Homer Nixon. Later, Bable was promoted to Nixon's assistant and, in 1969, Bable became superintendent.

Bable has lived in Chelsea since 1960. He and his wife, Ruth, reside on Old US-12.

According to Bable, his job has ranged from taking cats from electric poles and examining downed wires and storm damage to rebuilding the electrical system in 1971 and 1972.

In his 25 years, according to Village Administrator Fritz Weber, Bable "has done an excellent job in maintaining the existing system and was instrumental in its re-building."

But, by being on 24-hour call, always available when necessary, Bable, at age 62, is ready to retire. He and his wife, who had retired previously, will continue to reside in Chelsea and in their Florida home.

"I've really enjoyed my work," he comments. "I've met some very nice people in my 25 years with the village."

As of Friday, June 5 no replacement had been appointed to take on Bable's duties.



Published every Tuesday at 300 N. Main Street, Chelsea Mich. 48118, and second class postage paid at Chelsea, Mich. under the Act of March 3, 1879. Postmaster: Send address changes to The Chelsea Standard 300 N. Main St., Chelsea, Mich. 48118.

Subscription Rates (Payable in Advance)  
In Michigan: One year in advance ....\$8.00  
Six months .....\$4.50  
Single copies mailed ....\$ .50  
Outside Michigan: One year in advance ....\$10.50  
Six months .....\$ 5.50  
Single copies mailed ....\$ .75

MEMBER **NATIONAL NEWSPAPER ASSOCIATION** Founded 1888  
National Advertising Representative: MICHIGAN NEWSPAPERS, INC.  
827 N. Washington Ave.  
Lansing, Mich. 48906

## JUST REMINISCING

Items taken from the files of The Chelsea Standard

### 4 Years Ago . . . 14 Years Ago . . .

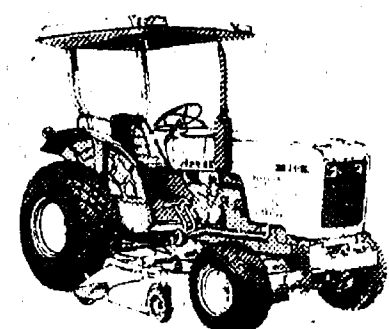
**Thursday, June 16, 1977—**  
After voting for union representation last December, some 102 workers at the Industrial Plastic Specialties Co. (IPSCO), put their new union to the test this week. The workers, members of UAW Local 985, walked off their jobs at 7 a.m. Monday, after a lingering wage dispute held up what would be the workers' first contract agreement.

An unprecedented turnout of 2,831 voters in the Chelsea School District failed to salvage program cuts resulting from last month's school millage failure as they again turned down the Board's proposal for a 4.4 mill school tax increase in Monday's election.

Only moments after a 13-year-old Chelsea boy rammed into the rear of a car in front of the Grove Dime Store Wednesday morning, a 40-year-old Chelsea woman collided with a motorcycle just yards away, to give Chelsea police an unexpected mid-week workout.

After meeting for 45 minutes Monday, June 13, Lima Township Supervisor Robert Musolf and members of the Lima Township Board were again unable to reach agreement on a new appointee to the Lima Township Planning Commission. The first attempt to fill the one-member vacancy was made June 6 at a regular meeting of the board.

**Mow, till, landscape . . . perform dozens of jobs with a compact utility tractor from John Deere**



The 650, 750, 850, 950 and 1050 Tractors are easy to service and operate. Yet they have features you'd expect only on larger tractors. Category 1 3-pt. hitch (load and depth sensing on the 1050). 540-rpm PTO (continuous-running on the 1050). 8-speed transmission. Plus a mechanical front-wheel-drive option for the 650, 750, 950 and 1050. More than 20 implements to choose from.



**HURON FARM SUPPLY**

8250 Dexter-Chelsea Rd.  
Dexter 426-8847

**SPECIAL**

**BOSTON SCROD**

With Soup and Salad Bar

**\$5.00**

Monday, June 8 through Saturday, June 13

**FRIDAY:**

**FISH & CHIPS . . . \$4.50**

**PAUL BUNYAN RESTAURANT**

Phone 662-6641

5510 JACKSON RD. (at Zeeb Rd.) ANN ARBOR

## MICHIGAN MIRROR

By Warren M. Hoyt, Secretary, Michigan Press Association

**Prison Riots Caused By "Staff Mutiny" Report Says**  
A report to Governor William G. Milliken blames the outbreak of prison riots on a "staff mutiny" with one riot at Jackson leading to others at Ionia and Marquette.

Peter Ellsworth, the governor's legal counsel, in making the report to the governor, put preliminary damage estimates at \$2 million at Jackson and less than \$1 million each at Ionia and Marquette. Some 45 prisoners and 68 staff members were left injured at the three prisons during the uprisings.

The Department of Corrections reports that full damage estimates will not be ready until sometime in early June.

Ellsworth concluded that Jackson guards moved to lock up prisoners despite contrary orders from prison management, but said it was uncertain whether a strike was planned.

The guards, and its union, the Michigan Corrections Organization "in essence unlawfully took over management and control of the State Prison of Southern Michigan," the report said.

Fred Parks, director of the organization, submitted a statement to governor in which he said the guards took action to protect their safety and the management under the level of warden acted

irresponsibly and indecisively in dealing with the situation.

"It is management's failure to meet its statutory obligations under (the Michigan Occupational Safety and Health Act) by refusing to maintain staffing at the critical levels, which was the root of the recent disturbance at Jackson," Parks said.

Milliken, who also named a nine-member task force to more fully investigate the prison disorders, said one charge specifically will be to investigate the actions of staff.

He said a preliminary report will be due in 30 days and a final report in 60 days.

Department of Corrections Director Perry Johnson said he will take "appropriate action" for violations of rules or law by guards or inmates.

He said he recognized animosities exist between the union and the Jackson administration, but noted he is trying to work out the differences.

The director reported the seven units destroyed by fire, which held about 200 inmates, will not be replaced since they were scheduled for removal by 1984 anyway.

Instead, inmates are temporarily doubling up and will be disbursed to other institutions eventually.

Ellsworth recommended

serious consideration of opening a new prison in Ypsilanti before the scheduled Sept. 1 date.

Johnson added that employee discontent, overcrowding, warm weather and an accumulation of desperate men, who do not have the hope of gaining good time credits all helped contribute to the prison violence.

Credits for certain violent criminals were eliminated through an initiated law that is now three years old.

While Johnson is a strong advocate of the use of good time he said he doubted if there would be much sympathy for rewarding prisoners for the behavior.

### Utility Companies Institute Lifeline Rate Structure

A lifeline rate structure, providing rates 15 percent lower than average prices for a basic block of electric usage has been approved for use by Detroit Edison and Consumers Power.

The rate structure was required by a 1980 state law, which required a block of electric usage sufficient to meet basic household needs to be priced low enough to be affordable by most customers.

Because the price increases for usage beyond that basic block (360 kilowatt hours for a one or two member family and 510 kilowatt hours for larger families), the rate structure is expected to help induce conservation.

### Silver Lake Canoe Accident Claims Westland Man

A Westland man died last Saturday as a result of a canoe accident on Silver Lake.

James Allen Barnard of 2565 S. Wayne, Westland, and his brother, both non-swimmers, were in a rented canoe on the lake when the canoe tipped over.

When rescue attempts from the shore failed, the Washtenaw County Sheriff's Department and the Dexter Fire Department were called to assist.

A Sheriff's Department helicopter located Barnard and Deputy Fagan of the Marine Division dove into the lake to retrieve his body.

Barnard was rushed to the University of Michigan Hospital where CPR attempts failed to revive him.

Yours truly,  
Uncle Lew.

## Uncle Lew from Lima Says:

DEAR MISTER EDITOR:

The fellers heard a encouraging word Saturday night during the session at the country store. Zeke Grubb come with this report where June is the best month to be alive and stay that way. He had saw where a life insurance company had run a study on times most dangerous to your health, and the least risk is now. Zeke was of a mind that mothers of June brides was left out, or this month would of been declared a natural disaster.

The two-year survey showed, Zeke said, that February is ulcers and heart attacks, and that apendicitis hits more folks in October. The air must be bad in January, he allowed, because that's when there are more breathing problems. Natural, nerves go to the bad around April tax times. The middle of winter is a good time for a bad accident, Zeke declared, and staying home is no insurance since that's where most of em happen. Zeke said we had better git the most out of June because summer travel and vacations is especial hazardous to life and limb.

Practical speaking, Bug Hookum said, he would file Zeke's report with them fillers you see in the paper about the moon controls the tide and how many stones went into the pyramids. Bug said he couldn't figger how knowing when his heart is most likely to attack will do anything but give him a ulcer worrying about it. On the other hand, Bug went on, the life insurance company is bound to work that report in its favor cause they ain't no way the feller with the policy can win. He's betting he won't live, the insurance company is betting he will and he's hoping he loses. You got to use logic fer facts to mean anything, Bug said, like the feller did that said all the violence in our prisons shows him that we got the right people locked up.

Clem Webster said he was glad Bug brung up logic, since he had two items in that class. Fer instant, Clem said, he had saw where to much running was giving wimmen problems with having babies, and somebody ask if jogging can be used fer birth control. Clem said you put in a little logic and you know it can, if the wimmen run fast enough. As fer the report where family life is being broke up by both parents working, Clem declared that when you sprinkle that claim with logic you come up with the fact that both working is better than neither one working. Far-

### 34 Years Ago . . .

**Thursday, June 19, 1947—**  
The Rev. E. R. Major, who has been pastor of the Methodist church here since Feb. 16, 1944, has been appointed to the pastorate of the Willard St. Methodist church at Ottumwa, Ia., and will take up his duties there on Sunday, June 29.

Miss Martha Kusterer of Ann Arbor, formerly a Chelsea resident and sister of P. G. Schaible and Waldo Kusterer of Chelsea, was honored at a reception given for her Saturday evening at the Women's Athletic building in Ann Arbor in recognition of her 30 years of service as a secretary to the director of nursing at University Hospital. The reception was given by alumnae of the University School of Nursing.

Louis Bernath is closing out the stock of the Chelsea Electric Sales and Service store, of which he has been sole owner since the death of his partner, LeRoy Mayer.

### Drug Awareness Program Presented In Grade Schools

(Continued from page one)

students. It was very interesting to see from the discussions that quite a few of our 11-year-old children know more than you would think about alcohol and drugs. They are also very frightened and concerned about confronting this next year in middle school.

A comment was made that this was the first time in Washtenaw county anyone has provided such a program to this age group. Since it was well received, the Western Washtenaw Community Council Family Task Group will be approaching the school system to make this particular project a yearly program for fifth graders in Chelsea school system.

LET **WANT ADS** WORK FOR YOU

### WEATHER

**Forecast . . .**  
Tuesday through Thursday. Chance of thunderstorms. Tuesday, Wednesday and Thursday. High temperatures in the mid-70s Tuesday and the low 70s Wednesday and Thursday. Lows will be in the upper 50s Tuesday and the low 50s Wednesday and Thursday.

**For the Record . . .**

	Max.	Min.	Precip.
Tuesday, June 2	79	58	Trace
Wednesday, June 3	81	57	0.27
Thursday, June 4	82	67	0.06
Friday, June 5	82	65	0.00
Saturday, June 6	84	70	0.00
Sunday, June 7	86	68	0.00
Monday, June 8	84	65	0.51

## HOW TO CUT FUEL OIL or PROPANE COSTS 50% to 75%

You can join over 5,000 families saving up to 75% of previous heating costs. Replace your old furnace with a super efficient **TETCO "GEO-THERMAL" HEATING SYSTEM.** Heat your entire home with 50 to 75% savings. **YOUR SAVINGS WILL PAY FOR THE SYSTEM!**

YOU CAN BE INDEPENDENT OF FAST RISING OIL AND PROPANE COSTS!

FREE literature shows how you can get savings equal to buying FUEL OIL at 26¢ a gal. or PROPANE at 18¢ a gal. Call for details! Or see demonstration model heat our showroom!

**CLARK & PHILLIPS** 2553 W. Liberty ANN ARBOR  
Heating & Cooling Co. 663-4840

"I back the family insurance I sell with good neighbor service."  
**CALL ME.**

**JERRY ASHBY**  
105 S. Main Ph. 475-1511



STATE FARM Insurance Companies  
Home Offices: Bloomington, Illinois



Like a good neighbor, State Farm is there.

**SPRING for something BIG!**

Spring for the big investment with a fast return. a 182 day Money Market Certificate. Just \$10,000 puts you in the big league of high interest earnings. You're certain to realize the most for your savings investment, when you purchase a 26 week Money Market Certificate. Stop in for complete details and the current interest earning rate

**26-Week Money Market Certificates**

**CHELSEA STATE BANK** Member F.D.I.C. **CSB**

A substantial interest penalty is charged for early withdrawal of time funds. Federal regulations prohibit the compounding of interest during the term of deposit.



## Inverness Ladies Golf Results

On Thursday, May 28 Inverness Ladies Day was spent golfing to attain the best score of three holes picked by the chairman. Winners were Yolaine Carignan, first flight; Bolly Windt, second flight; and Shirley Moon and

Ruby West tied for third flight. Low putts put Marj Daniels and Dorothy Hale in a tie for first flight while Olga McCormick took second flight and Eileen Brown and Alda Knight tied for third flight.

Olga McCormick, Ruby West and Louelle Patterson had no-putters.

Best ball-best hole was played on Thursday, June 4. Two teams tied for first place. They included Evelyn Hunter, Lorna Eberts, Bolly Windt and Jane Simpson on one team and Florence Broegman, Jane Bennett, Wilma Moon and Arlene DeWolf were on the other.

That day, Agnes Denton, Olga McCormick, Anna Shirilla and Ellie Reynolds had no-putters.

## CAROL'S CUTS

40 CHESTNUT

Monday, Wednesday and Friday  
475-7094

Appts. Only  
9:30 a.m. - 3:00 p.m.

## THE LOFT FRAME & ART GALLERY

107 1/2 S. Main St., Chelsea Ph. 475-2726

LIMITED EDITION PRINTS  
& CUSTOM FRAMING



Mr. and Mrs. Steven Albert McGee

## Gail M. Willett, Steven McGee Wed at Methodist Home Chapel

Gail Marie Willett and Steven Albert McGee exchanged wedding vows Saturday, May 30 at the Chelsea United Methodist Home Chapel. Officiating at the ceremony, in the presence of 160 guests, was the Rev. Marvin H. McCallum.

The bride is the daughter of Mr. and Mrs. Wesley Willett of South Haven. Parents of the bridegroom are Mr. and Mrs. Ivan McGee of Adrian.

Serving as maid of honor was Beverly Paul of Chelsea while the bride's cousin, Dee Moore of Wheeling, Ill., was the bridesmaid.

Best man was William Paul of Chelsea. Serving as groomsmen was the son and daughter of the bridegroom, Douglas E. and Colleen Y. McGee. Organist for the wedding was Marge Wiedmayer.

The bride's gown was hand-made by herself and was constructed of white satin with an empire waist. The bodice was covered in lace that matched the front lace panel and straight lace sleeves. The scooped neckline,

hemline and short chapel train were trimmed in a wide lace. The mantel veil was also trimmed in matching lace.

The maid of honor and bridesmaid wore floor-length light blue dresses of polyester knit which featured a scooped neckline and ruffle.

The flower girl wore a hand-made dress of light blue cotton print with a scooped neck and a white ribbon sash.

The bride carried a cascade of white daisies and yellow silk tea bud roses. Other flowers were arrangements of daisies, yellow daisies, mums, carnations, baby's breath and yellow silk tea bud roses.

Immediately following the wedding ceremony, a reception for 180 guests was held at the Chelsea UAW hall.

The bride is a 1974 graduate of South Haven High school and a 1978 graduate of Western Michigan University where she earned a bachelor of science degree. She is currently employed at the United Methodist Home.

Her husband is a graduate of Lansing schools and is a member of the Chelsea Fire Department. He is employed at King Engineering in Ann Arbor.

## School Year Ends For Chelsea Co-Op Nursery Children

Chelsea Co-op Nursery concluded its 1980-81 school year by holding picnics at Park Lyndon, Hudson Mills and the Van Rippers farm.

The children were accompanied by their mothers at the cook outs in the parks. They played games together and were also awarded their diplomas by their teachers, Mrs. Sherry Jones and Mrs. Marsha Hansen.

The students spent many happy hours at the school, painting, drawing, cutting, climbing and creating innumerable projects.

Highlights of the year included visiting the game ranch and seeing many animals, planning and carrying out the successful Christmas Bazaar, bowling at Chelsea Lanes, and visiting the Chelsea Fire Department and MacDonald's.

Chelsea Co-op Nursery is now accepting applications for the 1981-82 school year. The nursery school offers both an assist and a non-assist program. For further information, call Denise Martell at 475-1966 or Donna Harsh at 475-1720.



COSENS-BENEDICT: A July 25 garden wedding is being planning for Cindy Lea Cosens, daughter of Mrs. Walter L. Cosens of Livonia, and Charles Elwin Benedict, son of Mr. and Mrs. Elwin P. Benedict of Manchester. The bride-elect is a 1979 graduate of Michigan State University and is currently employed in the Personnel Department of the Ann Arbor Trust Co., Ann Arbor. The prospective bridegroom, a 1971 graduate of Manchester High school, is owner and operator of C & B Painting, Manchester.

## Summer Band Program . . .

(Continued from page one)

and cornet players will report to Beach school on Monday, June 15 where class assignments will be made.

Wind instrument students should bring their instruments and the "Preliminary Book, Individualized Instructor," to the first class.

Percussion students should

bring snare drums, sticks and "Rubank Elementary Method for Drum." Books are available from Marshall Music and from the band instructors.

Persons in need of their book(s) prior to the first class session should contact Warren Mayer at 475-7063.

## Decoys . . . Decoys . . . Decoys . . . and more Decoys!



We have hand-carved decoys, hand-printed decoys, ceramic decoys, duck call decoys, paperweight decoys, and make-your-own decoys.

Gifts, gift wrap and thoughtful Father's Day cards by HALLMARK.

Put them all together with your love to make Sunday, June 21 your Dad's best Father's Day ever!

## Dayspring Gifts

116 S. Main St., Chelsea Ph. 475-7501

## FATHER'S DAY Specials

# FOR DAD

Levi Basic Denims . . . Regular \$14.88 \$17.99

Levi Basic Dress Pants 20% Off

P.J.'s - knee length Regular \$8.88 \$9.99

- ankle length Regular \$10.88 \$12.99

All Ties & Belts . . . \$1.00 Off

All Jogging Suits . . . 20% Off

because he's special!

at

# DANCER'S

Chelsea's Friendly Dept. Store

## Piano Students Appear in Recital

Piano students of Lois Hall had the opportunity to perform various musical selections, ranging from classical to popular Sunday afternoon, May 31. The students performed for their families and friends.

Taking part in the recital were Catherine Coffman, Michelle Graflund, Josie Krzeckowski, Kim McDaniel, Stacy McDaniel, Beth Peterson, Julie Stacey, Charity Strong, Phoebe Strong, Laura Unterbrink, Lisa Unterbrink, Rod Whitlock and Vicki Whitlock.

The recital was held at Mrs. Hall's home at 222 S. Lima Center Rd.

BARBARA M. WEHR, D.D.S.  
JOHN C. WEHR, D.D.S.  
THOMAS W. RUPRECHT, D.D.S.

FAMILY DENTISTRY

9477 N. Territorial, Dexter  
in North Territorial Family Clinic  
426-4635

Our office hours:  
Monday-Thursday 7:30 a.m.-9:00 p.m.  
Friday 7:30 a.m.-4:00 p.m.  
most Saturdays 9:00 a.m.-2:00 p.m.

## GET PROFESSIONAL carpet cleaning results (AT DO-IT-YOURSELF PRICES)

RENT OUR BINSERVAC—the portable, easy-to-use carpet cleaning machine that gently . . .

- rinses carpet fibers with hot water and cleaning solution
- loosens and lifts dirt, grime and residues to the carpet surface where they are immediately vacuumed up
- leaves your carpets CLEAN and FRESH!



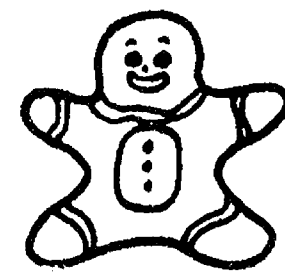
BINSERVAC  
CLEANS CARPETS  
DEEPER THAN CLEANERS! RENT for only \$10 1/2 day

## GAMBLES

110 N. Main Ph. 475-7472

## COUNTRY CRAFTIQUE

103 N. Main, Chelsea  
Ph. 475-2512



## What's New and News at COUNTRY CRAFTIQUE

FOR THE QUILTER . . .

Saturday, June 13 . . . 10 a.m.-12 noon  
CALENDAR QUILT BLOCK: Double Wedding Ring

Join us and learn the new, easier technique

CLASS LIMITED TO 12 FEE: \$10.00

Advance Registration includes all fabric

NEW CALICOES ARRIVING WEEKLY: Peter Pan

- ★ Beautiful Amish Solids
- ★ Gutcheon Polished Cotton
- ★ Logantex Quilt Me
- ★ Christmas Prints beginning soon

## FOR THE SEWER

- ★ Seersucker, plains and stripes
- ★ Denim in Colors and Navy
- ★ Terry in 6 luscious colors
- ★ Eyelet and Voile
- ★ Border Prints
- ★ Jogging Suit Fabric
- ★ T-Shirt single knits
- ★ Cross Stitch and Waste Canvas
- ★ New Books
- ★ Many new patterns for quilter and sewer

WATCH FOR OUR SUMMER WORKSHOPS



## South Pacific Cast Rehearsing

(Continued from page one) gracefulness make her perfect for the part.

The leads promise to be well supported by fellow cast members Harland Wood of Dexter and Mike Long of Chelsea, who read the parts of the commanding officers with authority,

and Phil Powers of Chelsea as the wise-cracking seabee, Stewpot.

"South Pacific" is a lively, funny and sometimes touching play. The cast is looking forward to a wonderful show and a very good time under the direction of Jeanette Tracy Brock.



**FOR PROFIT**

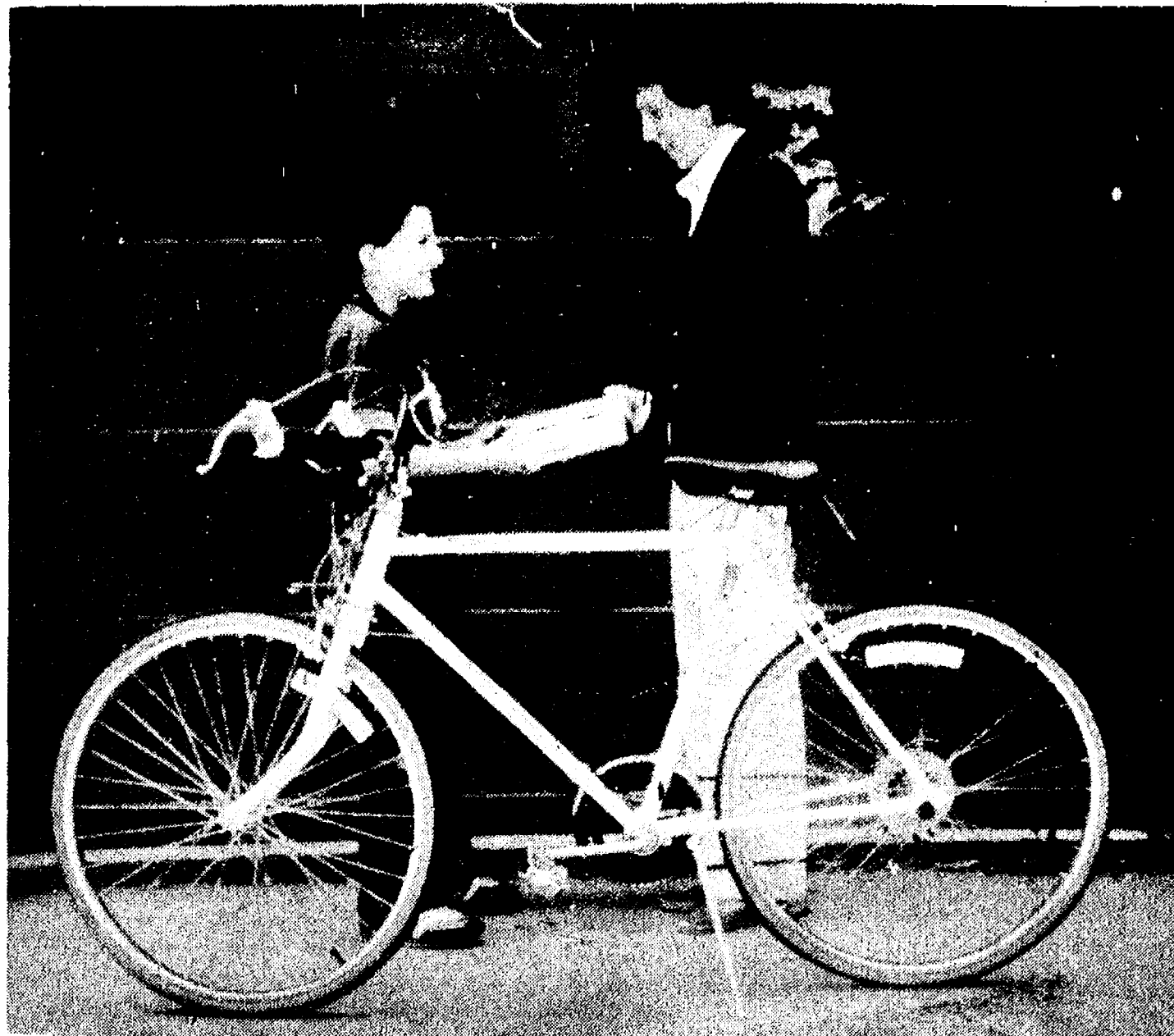
See us for feed needs!

**Feed Formulas Tested, Proved To Get Results**

Extra proteins, vitamins and minerals in proper balance, scientifically blended, make our feeds real profit producers for you.

**Farmers' Supply Co.**  
Phone 475-1777





**RECREATION DEPARTMENT FUND RAISER:** Heidi Boyer and Recreation Department Director Jackie Schiller pose with the Huffy 12-speed bicycle to be awarded to a lucky participant in the popcorn fund raiser which began

yesterday. The aim of the project is lessen the baseball and softball program deficits and to purchase quality equipment for the 600-plus participants in this season's summer program.

## Summer Ball Programs Will Require Additional Funds

Chelsea Recreation Department has registered more than 600 youngsters to participate in their summer baseball and softball programs. This is the largest number to ever turn out for the community program.

As a means of meeting the rising costs of necessary equipment, the Rec. Department has chosen to kick-off a fund raising drive. In this way, per person fees will remain the same.

According to the department, the summer ball programs take up the largest portion of their annual budget. In order to attain good, safe and quality equipment, a fund-raiser is inevitable.

Beginning Monday, June 8, participants will begin their project, selling popcorn door to door in hopes of narrowing the margin of deficit. The campaign is geared to be short and sweet and all products will be delivered prior to the Fourth of July. The one pound product, in either a strawberry decorator tin or in an eight piece package, will be sold at a cost of \$3.50.

Depending upon the numbers sold per person, participants will have the opportunity to win assorted prizes ranging from baseballs and softballs to a 12-speed Huffy bicycle.

### Vehicles Collide at Parking Lot Exit

At approximately 4:30 p.m. Thursday, June 4, an automobile accident occurred on Main St. near Jackson St.

A car, driven by Steven Toth of Chelsea, was backing up from meter parking and failed to see another vehicle, driven by John Dinkel of Pinckney, coming out of Heydlauff's parking lot. Toth's vehicle struck the other car. No citations were issued.

## Dial-A-Garden Topics Listed

Dial-A-Garden, the system of pre-recorded daily gardening tips, is sponsored by the Washtenaw County Co-operative Extension Service. The system is in operation 24 hours per day, seven days per week. Interested persons are invited to call 971-1122 at their convenience and receive timely, up-to-date gardening information.

Tuesday, June 9—"Does Ivy Harm Brick Walls?"

Wednesday, June 10—"The Wisteria."

Thursday, June 11—"Freezing Strawberries."

Friday, June 12—"Diseases Affecting Vegetables."

Monday, June 15—"Vegetable Insect Invasions."

Tuesday, June 16—"The Clematis."



**BERGMAN-WALTER:** Paul Frederick Walter and Debbie Louise Bergman have announced their engagement and plan an August wedding. The bride-elect is a graduate of Chelsea High school and is pursuing a career as an aide for the handicapped and mentally im-  
paired. Her fiancé is a graduate of Greenhills High school in Cincinnati, O., and from the University of Michigan School of Engineering, where he received a bachelor of science degree in applied mathematics. He is currently working as a researcher for the School of Public Health at the University of Michigan.

**CLASSIFIED ADS**  
*Really work*

## BOB SILVA CHEVROLET

Welcomes



**TOM DAULT**

*I'm glad to be able to serve you in my home town.*

1603 S. Main, Chelsea

475-1373

## Views On Dental Health

By ROBERT A. BURNS, JR., DDS, P.C.

### IMPORTANCE OF YOUR MEDICAL HISTORY

Your general medical history has a lot to do with the type of treatment you will receive at your dentist. For example, if you are taking a drug affecting blood clotting, the dentist should be informed so as to be aware of potential hemorrhaging problems should he have to extract a tooth.

A patient with high blood pressure should certainly inform the dentist. Certain anesthetics and medications should be used in preference to others.

If you have some form of heart condition, the dentist may change his method of working with you. The patient with a cardiac pacemaker should certainly inform his dentist. The dentist might have planned to do electrosurgery, a technique that

utilizes high-frequency current to remove gum tissue. If the pacemaker doesn't have proper shields or safeguards, the high frequency current could cause it to stop or become erratic. The dentist can use other means of treatment.

If you are pregnant, diabetic, allergic to certain medication, your dentist must know these things—it's for YOUR benefit.

If you have dental health questions you would like to see answered, please mail them to the address below.

A public service with the aim of promoting a better dental health environment. From the office of: ROBERT A. BURNS, JR., D.D.S., P.C., Chelsea Professional Building, 1200 S. Main St., Chelsea, Phone: 475-9124.

## FATHER'S DAY SPECIAL

COUPON

**SAVE 15¢**

On Any One of Three  
**Woodstove & Fireplace CLEANERS**

To the dealer: We will pay you 15¢ plus 7¢ handling charge for each of these coupons redeemed in accordance with the terms of this offer. To obtain payment send to SCHAEFFER BRUSH Manufacturing Co., Inc., 117 West Walker Street, Milwaukee, WI 53204. This coupon is good only when redeemed by you from a consumer at the time of purchasing SCHAEFFER BRUSH Chimney Cleaners. Any other use constitutes fraud. Invoices showing purchase of stock to cover coupons must be shown upon request. Consumer must pay any sales taxes. Coupon void if taxed, restricted or prohibited by law. Cash value 1/20 of one cent. Good only in U.S.A.  
Offer expires June 30, 1981.

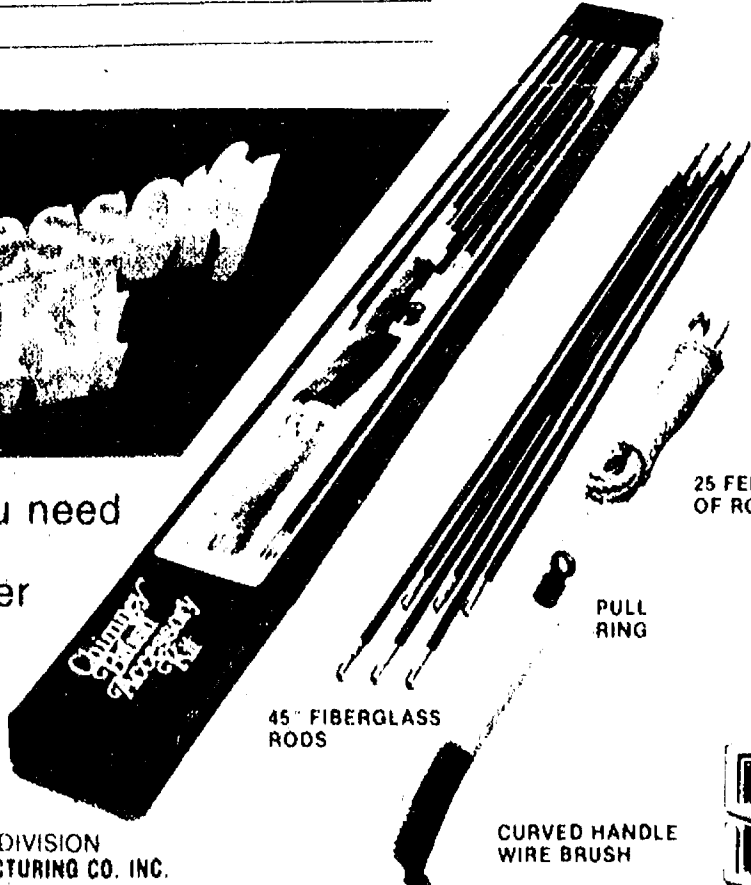
DEALER

ADDRESS

CITY/STATE/ZIP



Everything you need to clean your chimney, easier and faster.



CONSUMER PRODUCTS DIVISION  
SCHAEFFER BRUSH MANUFACTURING CO., INC.  
117 West Walker Street, Milwaukee, WI 53204 (414) 645-3664

COUPON

**ASCO ALL-SEASON COMFORT CO.**

OPEN 8 a.m. to 5 p.m. Monday thru Saturday

115 W. Middle St., Chelsea

Ph. 475-7617

**Yard-N-Garden**  
EQUIPMENT

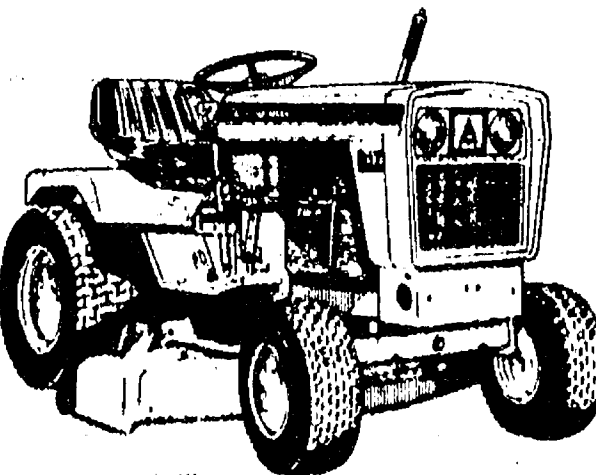
for Father's Day

JUNE 21



ALLIS - CHALMERS

LAWN AND GARDEN EQUIPMENT



900 Series  
Model 917

With Mower  
List \$4599.00

**SPECIAL**

**\$3895**

FINANCING  
AVAILABLE



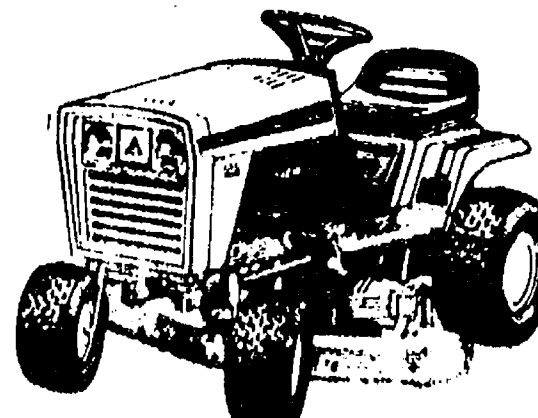
OPEN:

Monday-Friday

8:00 AM - 5:30 PM

Saturday 8:00 A.M. - 5:00 PM

**Better  
By  
Design**



600 Series  
Model 616

With Mower  
List \$2299.00

**SPECIAL**

**\$1950**

**SAVE**  
**\$1000**  
Up To  
on other  
models in stock  
Exp. 6/24/81

**YARD - N - GARDEN  
EQUIPMENT, INC.**

2524 LANSING AVENUE • JACKSON, MICHIGAN 49202

**"WHERE THE SERVICE IS!"**  
(in the Ray Ludlow Building)

WE TAKE  
TRADE-INS

PHONE

784-3146

TRACTORS • MOWERS • TILLERS • ROLLERS  
SNOW BLOWERS • LAWN SWEEPERS • DIESEL TRACTORS •  
COMPOST SHREDDERS

ALLIS CHALMERS - ALLIS CHALMERS - ALLIS CHALMERS - ALLIS CHALMERS - ALLIS CHALMERS



# Special Awards Presented To Beach School Students

Beach Middle school students were honored Thursday, June 4 for their accomplishments during the 1980-81 school year. Perfect attendance and honor roll awards were distributed in the cafeteria while improvement and scholastic achievement recognition was made in the classroom in which it occurred.

## PERFECT ATTENDANCE, 1980-1981

6th Grade — Melanie Flanigan, Ronald Grifka, Jeffery Harvey, Jodi Keezer, Jason Smith and Michael Westhoven.

7th Grade — Andy Fenton, Karen Foster, Peter Hanna, John Heim, Susan Overdorf and Devon Thomas.

8th Grade — Mark P. Bentley, Daniel Fenton, Yvonne Gaken, Forest Giesey, Matthew Grau, Kevin Koch, David Shoemaker, Phillip Shures, Josh Smith, Lisa VanScholck and Anita Welch.

## ON HONOR ROLL FOR THE 1980-1981 SCHOOL YEAR

6th grade — Jeff Andress, Eric Bell, Matt Bohlender, Jennifer Boughton, Allison Chasteen (all A), Kim Clutter, Melanie Dills, Kirsten Erickson, Marla Feldman, Kim Ferry, Melanie Flanigan, Cindy Gaken, Christina Guard, Donna Guinan, Kim Hamrick, Edie Harook, Jeff Harvey, Heidi Hosner, Drew Hubal, Jodi Keezer, Lee Kemmish, Bryan Kidd, Mak Krzeczowski, Jon Lane, Jay Marentay, Beverly Martin, Jeff Mason, Trisha Mattoff, Elizabeth Maurer, Tom Miller, Kathy Morgan, Linda Mullison, Casey Murphy, Sara Noah (all A), Carol Palmer (all A), Denise Pratt, Chris Rainey, Amy Richardson, Mary Rigg, David Ringe, Loren Rosenberg, Susan Schmunk, Deana Slusher, Petra Spalding, Leigh Spencer, Jeff Stacey, Todd Starkey, J. J. Stephenson, Cindy Stirling, Dawn Thorne, Norman Thorne, Mike Westhoven, Cristen Zerkel.

7th Grade — Ty Anderson, Melissa Bair, Dan Bellus, Raechel Bery, Jackie Boosey, Tim Bowdish, Angela Brand,

Donna Bruck, Cathy Burkel, Gary Callison, Kim Clouse, Kim Collins (all A), Paula Colombo, Jennifer Colvin, Jim Cook, Laura Damm, Dan Degener, Jim Eisenbeiser, Christie Favers, Andy Fenton, Cassandra Fisher, Karen Foster, Mark Freitas, John Goders, Susan Grant, Heather Grenier, Rose Grifka, Tracy Guard, Melanie Gunn, Mari Haapala, Tracie Harook, Sommer Havens, Katie Heaton, Laura Heeter, Chandra Hurd, Angie Jacobinski, Peter Janik, Doug Jankuski, Susan Jaques, John Jedele, Kim Kaminski, Missy Kelsner, Jackie Kelly, Matt Koenn, Martha Koernke, Josie Krzeczowski, Cindy Kvarnberg, Ken Martin, Rob Murrell, Laura Nix, Susan Overdorf (all A), Crystal Porath, Cindy Poulter, Shawn Quilter, Jimmie Ritter, Jill Schaffner, Chris Schluppe (all A), Sonya Steele, Devon Thomas, Julie Thompson (all A), Stacy Tone, Jeff Wheaton, Steve Whitesall.

8th grade — Laura Anderson, David Bareis, Cathy Basso, Brent Bauer, Gayla Bauer, Mark P. Bentley, Charles Boonius, Marie Bulick, Dan Fenton, Becky Finch (all A), Lori Folcik, Chad Freyre, Yvonne Gaken, Debbie Garman, Stephanie Grant, Tony Hammerschmidt, Kelly Hawker, Tami Heim, Mark Henson, Steve Hunn, Cindy Issel, Scott Jones, Brett Knickerbocker, Julie Koch, Laura Koepele, Steve Kropf, Becca Lee, Andy Martin, Jeff Messman, Karen Moore, Mark Neff, Kendra Neibauer, Carol Nix, Dawn Olson, Doug Otto, Tina Paddock, Rick Proctor, Mary Ann Richardson (all A), Rod Satterthwaite, Rachel Schmell, Joe Simon, Don Skiff, Amy Smith, Josh Smith, Matt Smith, Mark Stebelton, Ann Stock, Phoebe Strong, Phil Sweet, Kelly Thayer (all A), Joann Tobin, Beth Unterbrink, Will VanReeseema, Lisa VanScholck, Anne Weber, Wendy Westphal, Patricia Wilber, John Wilcox, Amy Wolter, Missy Young.

## OUTSTANDING, MOST IMPROVED STUDENTS

Art 6 — Outstanding: Eric Bell, Kim Hamrick, Drew Hubal, Matt Kemp, Rob Langbehn, Tom Miller, Denise Pratt, Chris Zerkel.

Art 6 — Most Improved: Mark Bareis, Scott Outhwaite, Doug Poley, Harold Polzin, Mike Popovich, Scott Wolak.

Art 7 — Outstanding: Kim Collins, Paula Colombo, Scott Salyer.

Art 7 — Most Improved: Dan Ellenwood, Craig Maciag.

Art 8 — Outstanding: Stephanie Grant, David Smith, Josh Smith, Anne Weber.

Art 8 — Most Improved: Tony Bentley.

Band 6 — Outstanding: Alto sax, Kathryn Morgan; clarinet, Alison Chasteen and Marla Feldman; cornet, Randal Hafner; flute, Charna Street; French horn, Laura Stephens; percussion, Jeffrey Mason; trombone, Jim Rooke.

Band 7 — Outstanding: Shawn Quilter.

Band 7 — Most Improved: Gary Callison.

Band 8 — Outstanding: Amy Wolter.

Band 8 — Most Improved: Bill Moller.

Choir — Outstanding: Lori Patrick.

English 6 — Outstanding: Kirsten Erickson, Melanie Flanigan, Jeff Mason, Denise Pratt, Amy Richardson, Chris Zerkel.

English 6 — Most Improved: Steve Blough, Ron Grifka.

English 7 — Outstanding: Gary Callison, Kim Collins, Jim Eisenbeiser, Karen Foster, Sue Overdorf, Jill Schaffner, Chris Schluppe, Julie Thompson.

English 7 — Most Improved: Jeanne Brown, Calvin Carlson, Michelle Lavigne, Ken Martin, Ray Spencer.

English 8 — Outstanding: Laura Koepele, Rick Proctor, Joe Simon, Kelly Thayer, Beth Unterbrink, Lisa VanScholck.

English 8 — Most Improved: Greg Buckberry, David Cianciolo, Kelly Harness, Lori Patrick, Jim Toon.

Geography 6 — Outstanding: Alison Chasteen, Melanie Flanigan, Christina Guard, Linda Mullison, Susan Schmunk.

Geography 6 — Most Improved: Renee Davis, Jeff Harvey.

History 7 — Outstanding: Ty Anderson, Raechel Bery, Paula Colombo, Rob England, Mari Haapala, Jackie Kelly, Martha Koernke, Jeff Larson, Crystal Porath.

History 7 — Most Improved: Peter Hanna, Cheryl Martin, Heidi Ratzlaff, Ray Spencer, Kevin Walz.

History 8 — Outstanding: Mark E. Bentley, Joe Gallas, Alison Hepburn, Julie Koch, Joe Simon, Kelly Thayer, Amy Wolter.

History 8 — Most Improved: Scott Collier, Mike Dixon, Eric Schaffner, Ann Stock, Tonya Yost.

Home Ed. 7 — Outstanding: Kim Collins, Karen Foster, Laura Goders, Laura Heeter, Jackie Kelly, Crystal Porath, Chris Schluppe.

Home Ed. 7 — Most Improved: Ingrid Weber.

Home Ed. 8 — Outstanding: Yvonne Gaken, Kendra Neibauer.

Home Ed. 8 — Most Improved: Debbie Bolanowski.

Industrial Arts 7 — Outstanding: Rob Beckwith, Dave Dresselhouse, Doug Jankuski, Ken Martin, Bob Torres.

Industrial Arts 8 — Outstand-

ing: Dave Cianciolo, Jeff Leisinger, Joe Merkel.

Math—Algebra — Outstanding: Mary Ann Richardson.

Math—Algebra — Most Improved: John Wilcox.

Math 6 — Outstanding: Jeff Andress, Heidi Hosner, Sara Hoah, Carol Palmer, Petra Spalding, Nancy Stierle, Mike Westhoven.

Math 6 — Most Improved: Ron Grifka, Robin Mock, Chris Zangara.

Math 7 (Accelerated) — Outstanding: Gary Callison, Crystal Porath.

Math 7 (Accelerated) — Most Improved: Karen Foster, Sue Jaques.

Math 7 — Outstanding: Tom Brugh, Carrie Collinsworth, Laura Goders, Sommer Havens, Laura Heeter, Kim Kaminski, Jackie Kelly, Beverly Przyski, Chris Schluppe, Devon Thomas, David Thompson.

Math 7 — Most Improved: Shanda Friday, Richard Massey, Hank Wright.

Math 8 — Outstanding: Brent Bauer, Donna Brooks, Yvonne Gaken, Kevin Koch, Pam Mullaly, Mark Neff, Phil Sweet.

Math 8 — Most Improved: Mike Brosnan, Chris Hegadorn, Liz Kincer, Tammy Schanz, Rachel Schmell.

Orchestra 7 — Outstanding: Susan Overdorf.

Orchestra 8 — Outstanding: Marie Bulick.

Orchestra 8 — Most Improved: Mike Dixon.

P.E. 6 — Outstanding: Todd Starkey.

Reading 6 — Outstanding: Kim Ferry, Sara Noah, Mary Rigg, Jeff Stacey.

Science 6 — Outstanding: Alison Chasteen, Heidi Hosner, Jeff Mason, Loren Rosenberg, Susan Schmunk.

Science 6 — Most Improved: Ron Grifka, Denise Pratt, Jeff Andress.

Science 7 — Outstanding: Raechel Bery, Kim Collins, Paula Colombo, Melanie Gunn, Susan Overdorf, Crystal Porath, Cindy Poulter, Sonya Steele, Steve Whitesall.

Science 8 — Outstanding: Dan Fenton, Tony Hammerschmidt, Laura Koepele, Joe Merkel, Kendra Neibauer, Rick Proctor, Joe Simon, Kelly Thayer, Joann Tobin.

Science 8 — Most Improved: David Bareis, Bill Geddes, David Smith.

Speech/Drama 7 and 8 — Outstanding: Carol Gerstler,

## Time Management Workshop Offered Free By WCC

On Thursday, June 11, from 7 to 9 p.m., Washtenaw Community College is offering a free workshop on time management. Facilitator of the workshop, Penny Griffith, says the two-hour session will introduce students to a variety of techniques for better management of their personal and professional time. Participants will examine also some of the individual weaknesses which eat up time, such as an inability to say "no," overstriving, procrastination, and difficulty juggling several roles.

The course will meet at the Adult Resources Center, 140 Student Center Building, on the main campus of Washtenaw Community College, 4800 E. Huron River Dr., Ann Arbor. There is no fee for the time management workshop, but advance registration is requested. For more information or to register, call College staff at (313) 973-3528.

The Adult Resources Center is a counseling center geared especially for adults who have recently returned to school or who are thinking of taking this step.

Laura Goders, Sue Overdorf, Jeff Staebler.

Speech/Drama 7 and 8 — Most Improved: Ken Cabanaw, Melinda Fletcher, Karen Forrester, Lori Patrick.

Strings 6 — Outstanding: Melanie Flanigan, Carol Palmer.

Typing — Outstanding: Debbie Bolanowski, Laura Koepele.

Vocal Music — Outstanding: Chris Zerkel.

## MARGIE'S UPHOLSTERY

FREE ESTIMATES

- Large Selection of Materials
- Upholstery Supplies
- Repair Service

Pick-Up and Delivery Available

MARJORIE SMITH

Ph. 1 (517) 536-4230

Call Collect between 8 a.m.-6 p.m. Monday thru Saturday. 6245 Brooklyn Rd., Napoleon

The Chelsea Standard, Tuesday, June 9, 1981 5

## Named to WMU Dean's List

A total of 1,139 students at Western Michigan University have been included on the dean's list for the recently concluded winter semester. To be eligible, a WMU student must have completed a 3.5 grade average in at least 14 hours of graded work.

Included among the honored students are Cathy A. Voita of 802

Flanders St., Chelsea and Pamela S. Stoffer, 901 Steinbach, Dexter. Three Manchester residents were also given honors. They include Stacey L. Ames, 5965 Kothe Rd., Sherri A. Cleland, 17520 Mahrie Rd. and Pamela S. Knickerbocker of 319 Ann Arbor St.



## KITCHEN REMODELING

★ We at Dutch Country are kitchen remodeling specialists.

★ Expert installation available.

★ Free design layout service.

- ★ Featuring: HAND CRAFTED AMISH CABINETS.
- ★ Distinctive "GOLDEN OAK CABINETS" By Continental.
- ★ Jenn-Air Appliances ★ Delta Faucets ★ Elkey & Kohler Sinks.

VISIT OUR SHOWROOM

## DUTCH COUNTRY KITCHENS

146 E. Main 428-7292 Manchester

## MICHIGAN GROWN

## Evergreen Nursery Stock

PINES, SPRUCE, FIR

Priced \$5 to \$20

Buy Direct from the Farm!



ASSORTED JUNIPERS, YEWs, ARBORVITE, ORNAMENTAL SHRUBS

\$6 ea. or your choice

2 for \$11

Colorado Spruce or White Pine

\$4 to \$20

AZALEA PLANTS, \$8.50

Open 9 a.m. to 6 p.m.

Closed Tues. & Wed.

## CHRISTMAS TREE LANE

4311 FISHVILLE RD., GRASS LAKE PHONE (517) 522-8321

(Off Francisco Rd.)

Now's the Time To Plant!

## Chelsea Cleaners

Ph. 475-1133

## PICNIC STAINS

Picnic season is here, and with picnics come special problems with stains. DO NOT LET A STAINED GARMENT HANG IN YOUR CLOSET! The longer a stain is on a fabric, the harder it will be to remove.

Some stains disappear when they dry; however, it does not mean the stain is gone. Soft drinks and alcoholic beverages, for example, will leave an invisible stain in your clothes, and if not removed, can leave brown spots later. Invisible stains have not vanished completely — they are always still there and may ruin a garment.

Salad dressing or mayonnaise spilled on your clothes can leave a yellowish-brown stain if they are not removed promptly. Mustard is a particularly difficult stain to remove because of a yellow dye called turmeric.

If you get a stain on your clothes, bring it to us right away, then we have the greatest chance of removing it safely for you.

## Sir PIZZA

500 N. Main, Chelsea Ph. 475-9119

## THIS WEEK'S SPECIAL TACO PIZZA

Small - Medium - Large

20% OFF

(Offer good June 9 thru June 15, 1981)

## DAILY SPECIALS

Monday thru Thursday 11 a.m.-1 p.m.

MONDAY — Ham Sandwich. Reg. \$1.95. 20% OFF \$1.56

TUESDAY — Junior Chef Salad. Reg. \$2.15. 20% OFF \$1.81

WEDNESDAY — French Dip. Reg. \$2.60. 20% OFF \$2.08

THURSDAY — 1/2 Crusader. Reg. \$1.65. 20% OFF \$1.32

MON. & FRI., 11 a.m. to 1 p.m. ... 20% Off on Pizzas

COFFEE IS 10c EVERY DAY

We Deliver Any Size Order

7 Days A Week from 4 to 10 p.m.

MONDAY CLUB

20% DISCOUNT

ON ALL PIZZAS

Every Monday All Year

OPEN FRI. & SAT., 11 a.m. to 2 a.m.

## Jiffy market

Big Enough To Serve You . . . Small Enough To Know You!

Corner of Sibley and Werkner Rds. - Chelsea, Michigan 48118

PHONE 475-1701

Sale Prices Effective June 9 thru June 13

## U.S.D.A. CHOICE BEEF STEAK



ROUND STEAK

\$2.19 lb.

Full Cut

ROUND . . . . .lb. \$2.39

SWISS STEAK . . . . .lb. \$2.19

CUBE STEAK . . . . .lb. \$2.49

LARGE END

RIB STEAK . . . . .lb. \$2.99

FARMER PEET RE-PEET-ER

## SLICED BACON

1-lb. Pkg. \$1.49

MAMA'S

Cheese Curls

Or

Corn Puff Curls

3-oz. pkg. \$1.19

ECKRICH

SMOK-Y-LINKS

10-oz. Package

\$1.19

ECKRICH

REG. OR THICK SLICED

BOLOGNA

1-lb. Pkg.

\$1.69

QUAKER MAID

FRESH

PEACH SUNDAE

ICE CREAM

1/2 gal. \$1.89

FRESH GRADE A - LARGE

## EGGS

Doz. 69¢

## FARM MAID SPECIALS

HOMOGENIZED

## MILK

gal. \$1.98

Low-Fat Milk

gal. \$1.69

Choc. Milk

qt. 59¢

YOGURT

Assd. Flavors 8-Oz. Crn. 45¢

KLEEN-MAID

## WHITE BREAD

20-Oz. Loaf (1-lb., 4-Oz.) 49¢

FRESH MEATS - GROCERIES - PRODUCE - BEER - WINE - LIQUOR

Open 7 a.m. Morning to 10 p.m. Nights - 7 Days A Week









# Real Estate

By PAUL FRISINGER  
REALTOR

## MORTGAGE FORCLOSURE

A mortgage is the pledge of your home to secure a loan. If you fall behind in your monthly payments, the lender is entitled to foreclose. Quite simply, he can sell your home in order to recover his money, though in most states you have the right to reacquire your foreclosed property by paying the mortgage and covering the foreclosure costs.

financial crunches. Most lenders prefer to work out some arrangement with you rather than foreclose. Your best protection is to keep up mortgage payments. But if you get into a jam, tell the lender right away and see if you can figure out a compromise about payments.

If the home is sold under foreclosure, you would get any cash left over after the loan is paid. (The court will oversee the transaction to protect your rights.)

Fortunately, foreclosures on family homes don't happen often these days, even during

If there is anything we can do to help you in the field of real estate, please phone or drop in at FRISINGER REALTY CO., 935 S. Main St., Chelsea. Phone: 475-8681; evenings 475-2621. We're here to help!

You Read It First in The Standard!

## Under New Management TOUCH OF CLASS HAIRSTYLING

1196 S. M-52, Chelsea PH. 475-1591

Owned and Operated By  
**JOYCE SPENCER**

PERMS, including Hair Cut, Shampoo and Set,  
Blow Dry and Iron ..... \$27 & \$30

SHAMPOO & SET ..... \$7.00 HAIRCUT ..... \$7.00  
BLOW DRY ..... \$7.00 BLOW DRY & IRON ..... \$7.50

Senior Citizens Rate Honored Every Day  
**STYLISTS:**

JOYCE SPENCER ..... Tues. thru Sat.  
Evenings By Appt.

JUDY EHNIS ..... Thurs. & Sat.  
NOLA FREYSINGER ..... Wed., Fri., Sat.

BECKY MORSE ..... Evenings only, 4-8 p.m.,  
beginning June 17

**FREE PARKING**

**COFFEE - TEA - HOT CHOCOLATE**

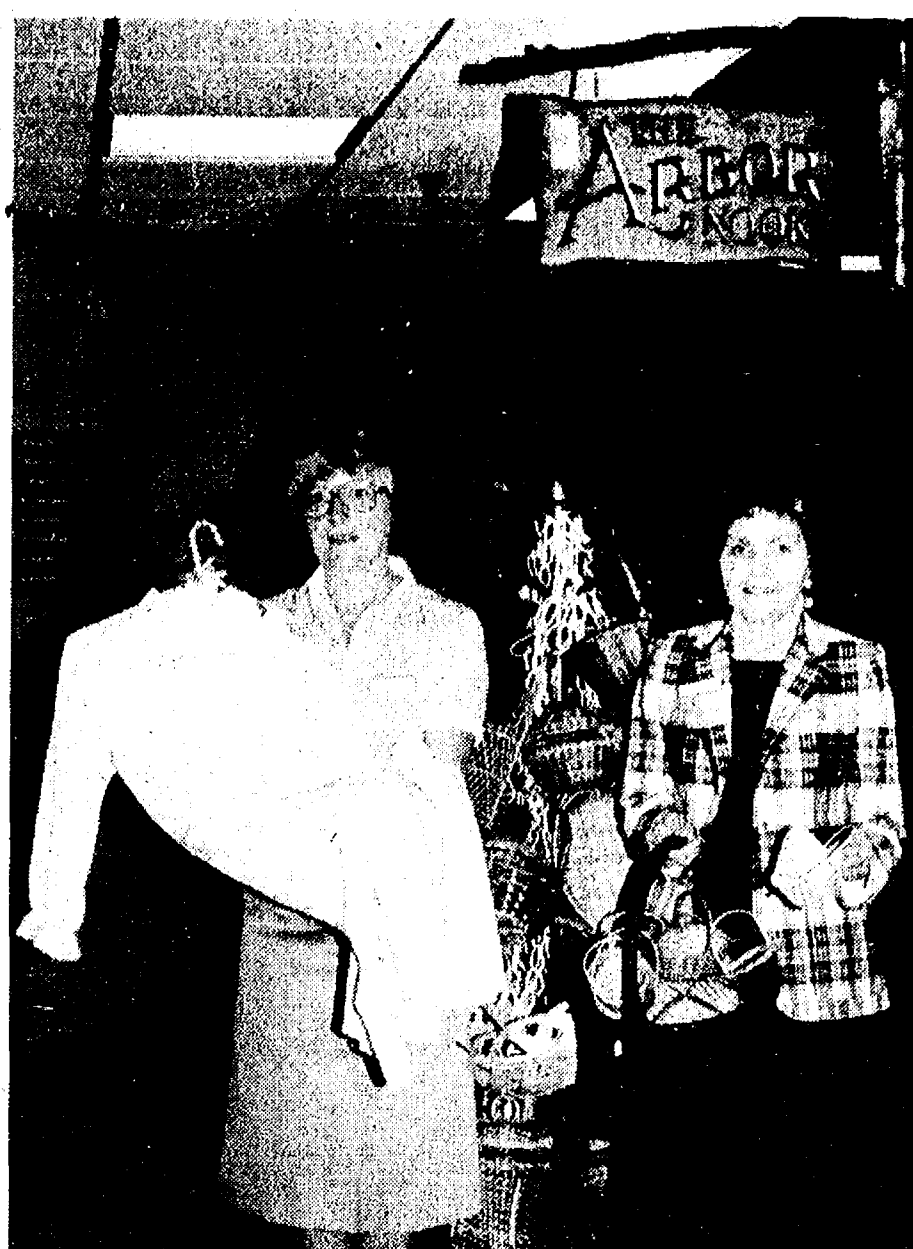
**DOOR PRIZE ..... FREE PERM**

Door Prize Drawing Saturday, June 27

**NEW HOURS:**

TUESDAY ..... 9 a.m. - 3 p.m.  
WEDNESDAY, THURSDAY, FRIDAY ..... 9 a.m. - 8 p.m.  
SATURDAY ..... 9 a.m. - 1 p.m.

**CALL US AT 475-1591**



**ARBOR NOOK ANNIVERSARY:** At age one year, the Arbor Nook gift shop at Chelsea Community Hospital will offer patrons a 10 percent discount on merchandise through June 22. Displaying items available are, left to right, Ella Aldrich and Doris Waggoner.



**THIS HANDMADE AFGHAN,** to be given away as part of the special events celebrating the first anniversary of the Arbor Nook, was made and donated by Dorothy Miller, who founded the Chelsea Community Hospital Volunteers in 1970. Displaying its intricacies is Vera Briston.

## Hospital Gift Shop Marks Birthday

Chelsea Community Hospital's gift shop, The Arbor Nook, is celebrating its first anniversary. In honor of this special event, various activities are being planned.

An afghan, made and donated by Dorothy Miller, will be given away June 22; tickets are available for \$1 at the gift shop. Dorothy Miller founded the Chelsea Community Hospital Volunteers in 1970.

Included in the items on sale are baskets of every imaginable size and shape as well as lingerie. All items in the store will be discounted by 10 percent through June 22.

Jane Freeman, manager of The Arbor Nook, said, "Our volunteers are justifiably proud of this attractive corner of the main lobby created by their efforts."

Mrs. Freeman suggests not waiting until a trip to the hospital becomes a necessity before seeing what the shop has to offer. New items are continuously being added to the ever-changing stock. All profits are returned to the community in the form of needed hospital equipment and services.

The Arbor Nook is completely staffed by volunteers, including three buyers and one scheduling person. Persons interested in donating time and energy should contact Jan Tupper, Director of Volunteers, 475-1311, ext. 310. The Arbor Nook business hours are Monday through Friday, 10 a.m. to 7:30 p.m.; Saturday and Sunday, 12 p.m. to 4 p.m.

## Girl Scout Cadette Troop Holds Fund Raising Projects

A rummage sale and car wash was held on Saturday, May 16 by Cadette Troop 98 at the Curling Post on North Territorial Rd.

The winners of the Cadette-sponsored raffle were also drawn on May 16. All of the prizes awarded were donated by Chelsea merchants.

The proceeds from these fund-raisers will be used for a variety of outings for the girls this summer. Cadette Troop 98 expressed appreciation to everyone who assisted during their fund-raising activities.

A formalized program in medical humanities at Michigan State University helps faculty and students in the health professions confront today's complex ethical questions involved in patient care.

## Job Placement Service Offered By Chelsea Schools

Chelsea Community Schools offers a Job Placement Service that operates year-round and can be of assistance to many local employers.

The service refers pre-screened 1981 high school graduates for permanent or temporary work. Majority of the graduates who have registered for placement assistance have vocational skills.

Chelsea, Dexter, Manchester, Milan and Saline School Districts have joined in the Southwest Washtenaw Consortium and together provide vocational training in 14 different programs from Office Procedures to Electronics and Health Operations to Construction Trades. The Consortium also provides placement assistance to graduates and students in the five schools.

For further information call Bob Miller, Job Placement Coordinator, at 426-4008 or 662-9898.

## THE BLACK SHEEP REPERTORY THEATRE

Presents

**Stop The World, I Want To Get Off!**

By Anthony Newley and Leslie Bricusse

**PERFORMANCES**

June 11-14, 18-21, 25-28

Tickets: \$7 Adult  
\$5 Senior Citizen/College Student w/ID  
\$3 Children under 18

Supported By: WCA and the Manchester Theatre Foundation

**BOX OFFICE HOURS**

Monday Wednesday 10am - 6pm  
Thursday Saturday 10am - 9pm  
Sunday 2pm - 6pm

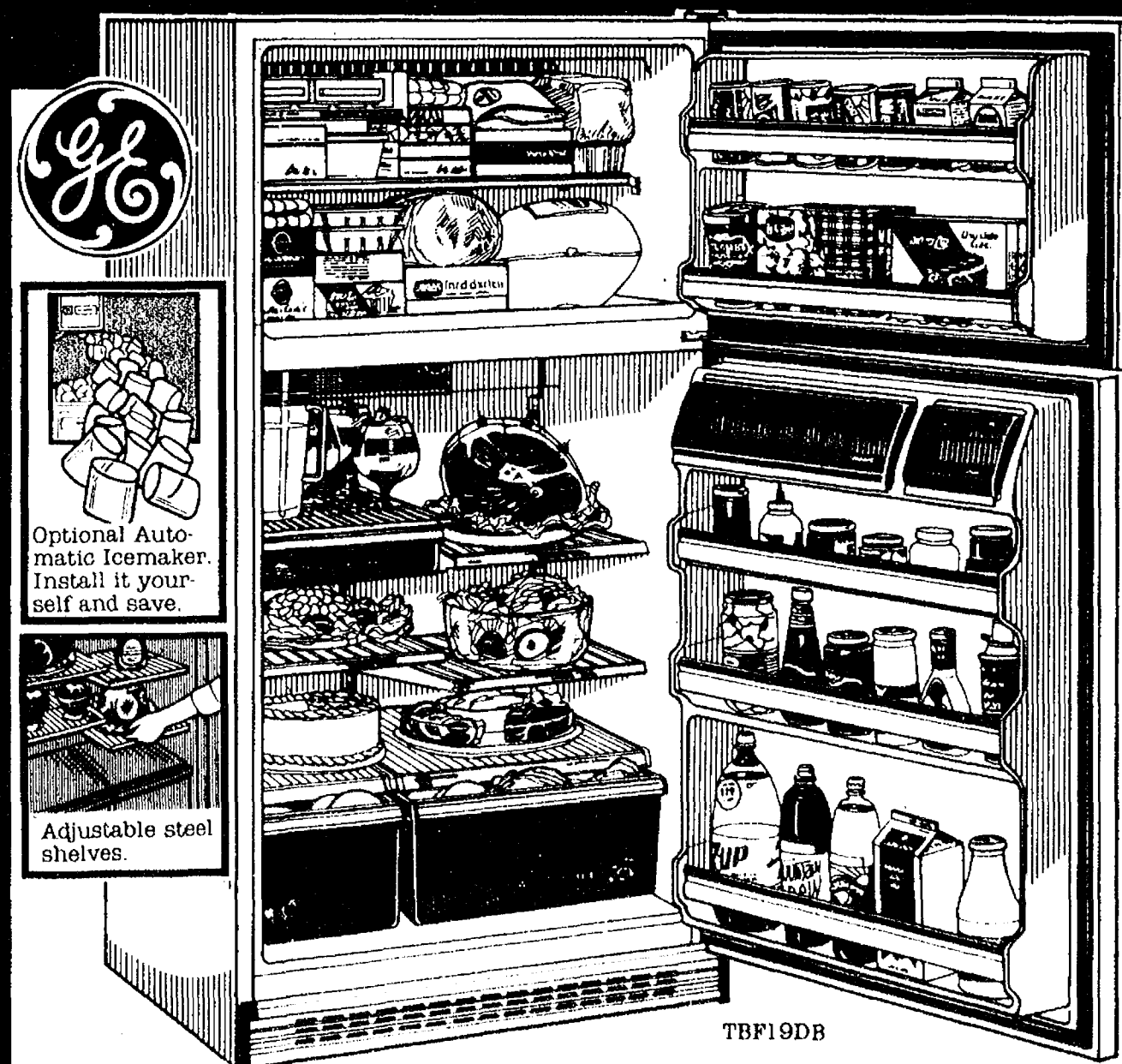
(313) 428-9280  
138 E. Main Street  
Manchester, Michigan

**SHOW TIMES**

Thursday - Saturday 8:15pm  
Sunday 4:00pm

# SAVE \$50

# NEW ENERGY SAVER 19\*



**19 cu. ft. No Frost Food Saver Refrigerator keeps food fresh longer.**

Features the Moist 'n Fresh sealed high-humidity pan for moisture-loving vegetables (has adjustable humidity control). A Cool 'n Fresh lower-humidity pan for fruits and berries. Plus a sealed Snack Pack for unwrapped meats, cheese or deli items. Also includes adjustable split-level shelves, 5.24 cu. ft. freezer. Rolls out on wheels for easy cleaning. 33" wide, 64" high. Energy Saver Switch in normal position helps cut operating cost.

\*Before purchasing this appliance read important energy cost and efficiency information available from this dealer.

# NOW ONLY \$649<sup>95</sup>

# HEYDLAUFF'S

113 North Main St., Chelsea Ph. 475-1221



## Wondering How You're Going To Pay For Their College Tuition?

## We Have The Answer....

## Guaranteed Student Loans

Guaranteed Student Loans are low interest, deferred payment loans that are available to students who have enrolled or been accepted for enrollment to an accredited college, university, or professional school. To be eligible for a Guaranteed Student Loan the student must be a U.S. citizen and we require that their parents have a checking account or savings account at Ann Arbor Trust.

We know that it's not easy to put a student through school. That's why

we've already helped many families with their children's tuition. Why not let us help you?

Stop by or call any of our offices today for more information.



## ANN ARBOR TRUST

THE BANK OF TRUST  
CHELSEA BANKING OFFICE • 475-9154  
1478 Chelsea-Manchester Road • Member FDIC

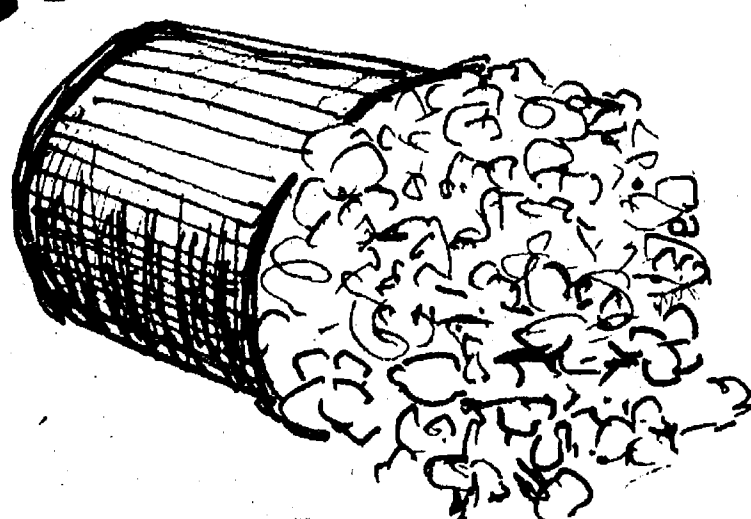




Bob Silva's

# OLD FASHIONED SUMMER PICNIC SALE

FREE  
POP  
CORN



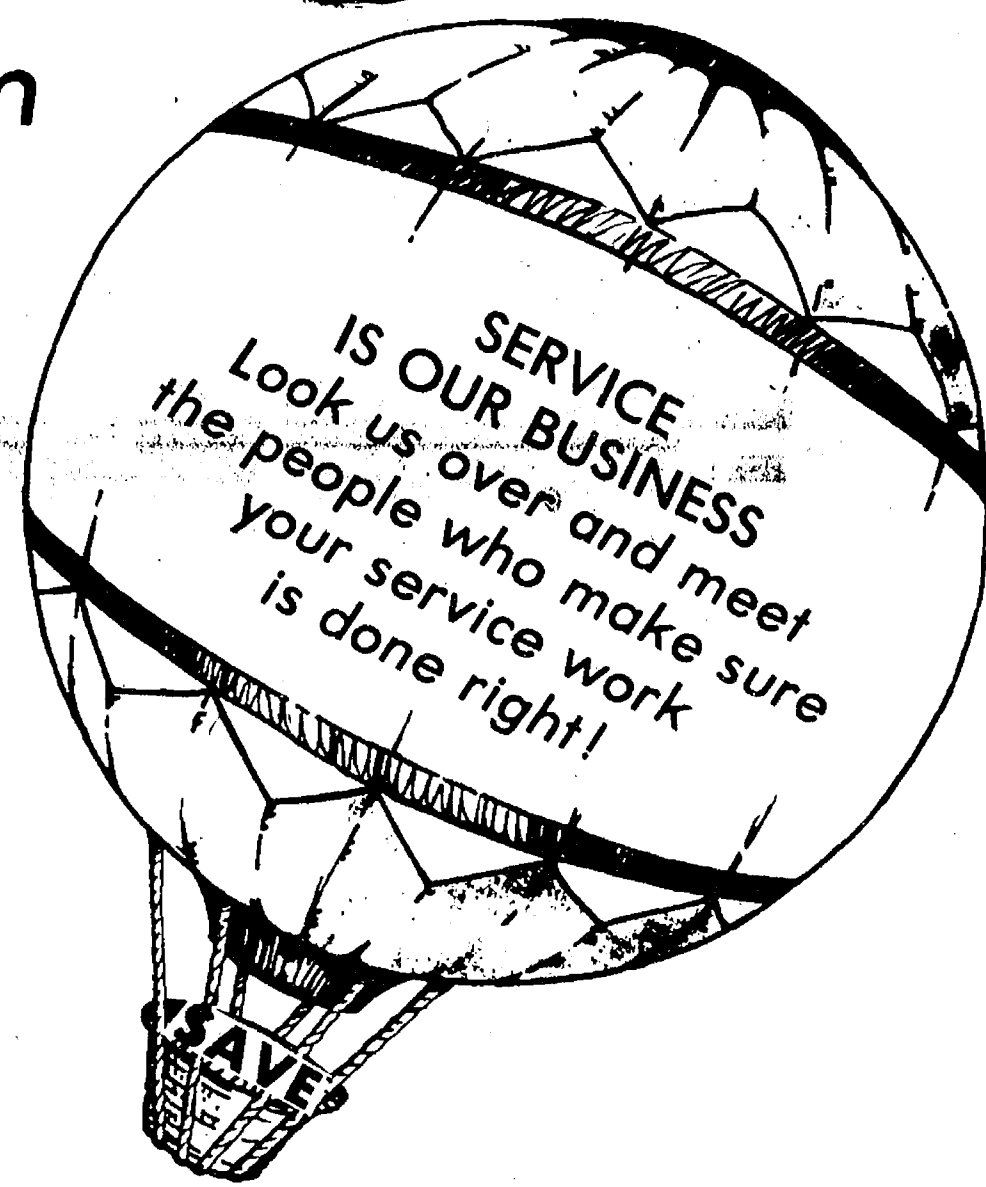
FREE HOT DOGS



FREE  
SODA  
POP



We Also Have Ice Cream



## SATURDAY AFTERNOON JUNE 13 - 2 Till 6 p.m.



Come By and See the Changes  
Made to Better Serve You

at



# BOB SILVA CHEVROLET

1603 South Main St., Chelsea

Phone 475-1373



## Rebekah Lodge Hosts District Officers.

At a regular meeting held Tuesday, June 2, Chelsea Rebekah Lodge No. 130 was host to the officers of District 12 lodges and members from various other lodges outside the District.

Business included the voting to

sponsor two children to camp this summer. Jodi and Loren Keezer were chosen to attend the Odd Fellows and Rebekah camp at Big Star Lake, near Baldwin.

The Lodge voted to take a vacation from meetings beginning

after the first meeting in July. They will re-convene at the second meeting in September.

PNG Club announced a potluck at Olla Velm's on June 9 at 6:30 p.m.

Parma Lodge was responsible for the evening's entertainment. President of District 12 is Diane Shilling. Mrs. Leone Hall, past assembly president of Michigan, was an honored guest. Members from other lodges included persons from Jackson, Vandercook Lake, Brooklyn and Dexter. Mrs. Virginia Geer acted as chaplain at this meeting.

Mrs. Hazel Dvorak and Hazel Dittmar were reported to be recovering from long hospital stays.

Mrs. Edith White, a member for more than 50 years was honored by a special cake for her 93rd birthday. It was presented to her by Dorothy Keezer.

Reports included Mrs. Josephine Hochrein's placing emblematic flags on all deceased members' graves with the help of her husband. Chairman Helen Harris reported on the success of the rummage sale.

Elected to be the representatives and alternate to assembly meetings in October were Olla Velm and Eulahlee Packard. They accepted the two-year terms.

Birthdays to remember for June were celebrated for Mrs. White, Helen French, Eva Barber, Lina Reule, Ruth Dancer, Phyllis Harook, Doris Rymill and Ruth Riemen-schneider.

The local lodge is on the entertainment committee for the next officers visitation at Martha No. 2, held at IOOF and Rebekah Home in Jackson. Mary Ann Coltre and Helen Harris will head the committee.

Helping with preparations of tables for this meeting were Helen Harris, Dorothy Keezer, Mariam Knobloch, Olla Velm, Alda Musbach, Jo Hochrein, Nina Lehman, Evelyn Hale and the Noble Grand.

# The Chelsea Standard

Section 2

Chelsea, Michigan, Tuesday, June 9, 1981

Pages 9-18



**FORD COLLECTION:** Howard Miller, left, of 405 Wilkinson St. obviously enjoys the Ford Motor Co. brand of automobile. According to Miller, he has had a lifelong interest in Fords, having started working as a mechanic in 1928. With him is Palmer Ford sales manager Lyle

Chriswell. Included among Miller's collection is, left to right, a 1912 Ford, a 1928 Ford, a 1970 pick-up and his newest addition, a 1981 Fairmont.

## FOR DAD



DRESS SHIRTS

DRESS SLACKS

SPORT COATS

BLAZERS

TIES - BELTS

SWEATERS - SHOES

## FOSTER'S

MEN'S WEAR

## Rec. Dept. Offers Summer Play Program for Children

Chelsea Recreation Department will sponsor a children's summer play program beginning June 15 and running through July 24 at both the North and South Elementary school playgrounds. Included among the activities are games, plays and sports. Directed by Fran Mullaly, students in the first through fifth grade are eligible to participate at a cost of \$1 per day. The following includes the first two weeks of the six-week program:

**Monday, June 15—**  
9:00 a.m.—Registrations and face masks.  
10:00 a.m.—Capture the flag.  
11:00 a.m.—Owl and Tom Toddlers.  
**Tuesday, June 16—**  
9:00 a.m.—Weaving place mats.

10:00 a.m.—Wiffle ball.  
11:00 a.m.—Treasure hunt.  
11:30 a.m.—Checkers.

**Wednesday, June 17—**  
9:00 a.m.—Tie dye.  
10:00 a.m.—Fox and geese.  
10:30 a.m.—English bulldog.  
11:00 a.m.—Checkers and pickup sticks.

**Thursday, June 18—**  
9:00 a.m.—Noise makers.  
10:00 a.m.—Circle dodge ball.  
11:00 a.m.—Nosebag dramatics.

11:30 a.m.—Checkers finals.  
**Friday, June 19—**  
10:00 a.m.—Clown Day—North meets South at the train station. Parade to Pierce Park. Ribbons for the best costume. Bring sack lunch. New games for the afternoon. Leave for home playground at 2:30 p.m.

**Monday, June 22—**  
9:00 a.m.—Paper airplanes, ribbons for speed, originality and design.

11:00 a.m.—Kickball and basketball.

**Tuesday, June 23—**  
9:00 a.m.—Homemade kites.

10:00 a.m.—Dog fights.

11:00 a.m.—Jump rope and horse basketball competition.

**Wednesday, June 24—**  
9:00 a.m.—Toothpick construction.

10:00 a.m.—Scavenger hunt.

11:00 a.m.—Checkers and jump rope competition.

**Thursday, June 25—**  
9:00 a.m.—String pictures.

10:00 a.m.—Soccer.

11:00 a.m.—Vampire.

11:30 a.m.—Play-offs.

**Friday, June 26—**  
9:30 a.m.—Leave playgrounds for Silver Lake. Bring sack lunch. Drivers needed. Permission slips, signed by the child's parent, are a must.

3:00 p.m.—Return to home playground.

**Monday, June 29—**  
9:00 a.m.—Choose puppet show and begin puppets.

10:00 a.m.—Hug tag.

11:00 a.m.—Crazy eights and concentration.

**Tuesday, June 30—**  
9:00 a.m.—Puppet making.

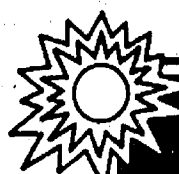
10:00 a.m.—Paper tag.

11:00 a.m.—Show practice.

11:30 a.m.—Red rover.

In 1790 only five percent of the American population lived in cities.

## HOME PROTECTION



# SALE

on Pittsburgh House Paints

Now thru June 30

### Sun-Proof® House Paints

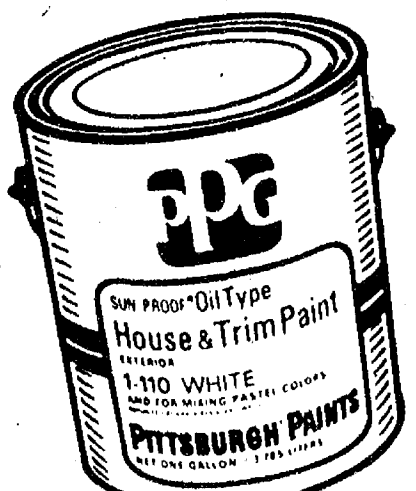


#### Acrylic Latex Flat

Mildew resistant on paint film for its own protection. Has built-in acrylic flexibility to weather the weather! Resists cracking and peeling. Easy application and clean-up.

NOW ONLY **\$13.49** gal. Save \$4.50 off reg. price

White and ready-mixed colors only. Custom colors slightly higher.



### Sun-Proof® Oil Type House & Trim Paint

Mildew resistant on paint film for its own protection. Formulated to weather the weather! Retains bright look for years. One finish for both siding and trim.

NOW ONLY **\$15.99** gal. Save \$5.50 off reg. price

White and ready-mixed colors only. Custom colors slightly higher.



### Rez® Wood Stains

An exceptional quality stain to enhance the natural beauty of wood. Your choice—interior or exterior, Oil or Latex, Solid Color or Semi-Transparent effect. 145 colors.

NOW ONLY **\$10.49** gal. **\$11.99** gal. Latex Type Oil Type

## CHELSEA HARDWARE

110 S. Main St., Chelsea

Ph. 475-1121

## SUMMER TIME TREATS at CHELSEA McDONALD'S

A SUNDAY SMILE

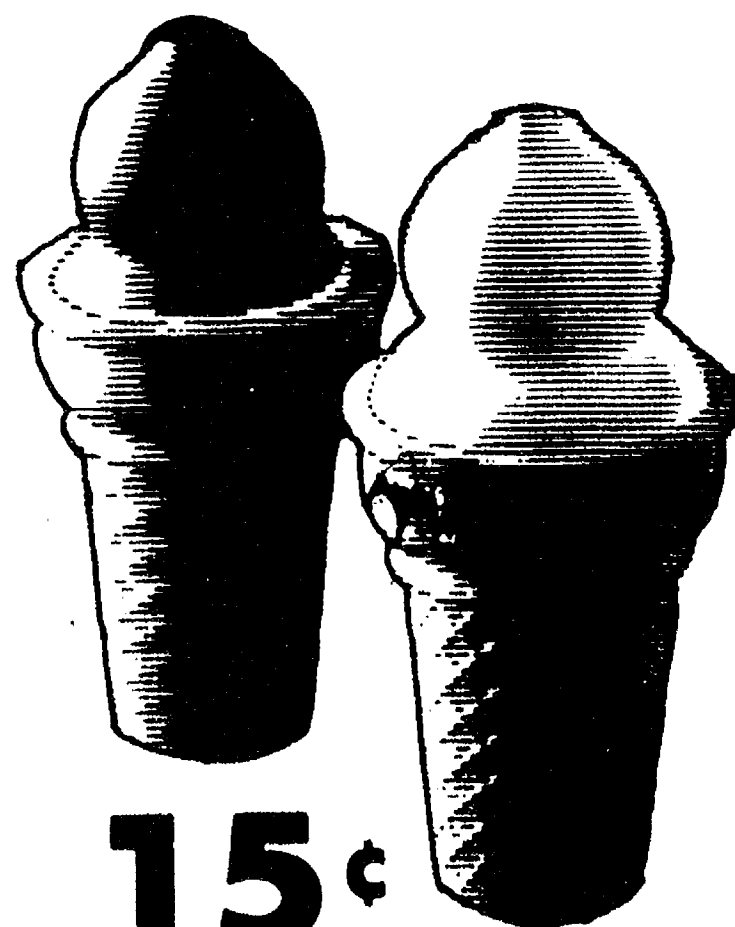
A COOL VANILLA CONE



**25¢**

IN THREE FLAVORS

Thick vanilla swirls covered with buttery hot fudge, tasty caramel or luscious strawberry topping and covered with chopped nuts.



**15¢**

Thick Vanilla Swirls Piled High on a Caked Cone

McDonald's Sundaes and Cones are so rich and creamy they'll make you smile when you eat one!



1535 S. Main St.  
Chelsea  
Ph. 475-9620



# SPORTS

## Girls Track Awards Made At Spring Sports Banquet

A total of 19 young ladies were awarded varsity track letters at last Monday's spring sports banquet. Three others were given junior varsity awards. Earning their junior varsity awards were freshmen Kay Bauer and Shannon Morseau who participated in the throwing events and sophomore sprinter Karen Knaggs.

Receiving first year varsity awards were four freshmen: sprinter Carrie Parkins; Sue Young, who established a new freshman record in the long jump this season; and a pair of middle distance runners, Wendy Wolfgang and Carol Warren, both of whom participated in the county Meet of Champions.

Sophomores getting their first year awards were jumper Sharon Glassford, distance runner Kristin Thomas and quarter miler Julie Hunn, who missed much of the season due to a foot injury. Junior Kathy Waldyke also received her first varsity letter for her performance in the shot put.

Four girls were given second year awards including senior distance runner Teresa Degener; junior distance runner Nancy Hastings, who lowered the school mile record to 5:35.6 this year; sophomore Sandy Frame, who holds the two-mile record at 12:09.1; and, sophomore sprinter Carolyn Chandler.

Third year awards were to half-miler Beth Heller, sprinter Lisa Vandegrift and 220 hurdle record holder Tracy Bohlender. Bohlender ran in both the Meet of Champions and the state meet this season.

Fourth year awards were presented to four outstanding seniors, Mary Boylan, Lorrie Vandegrift, Nancy Heller and Kathy Honbaum.

Boylan upped her school shot and discus records to 35'6 1/2" and 115'10" this year and holds every class record in both events.

Vandegrift was a versatile field event performer and hurdler and is co-holder of the school high jump record. She was Most

Valuable in her junior year and was the team's leading scorer in both her junior and senior years, finishing with 131 points this year. Lorrie has also been to the state meet twice in the high jump.

Heller is a half- and quarter-miler who holds the freshman record in the 880 and ran on two school record-setting relay teams.

Honbaum switched from the sprints to the 440 this year and ended her high school career with the Meet of Champions. She participated in the state meet as a sophomore and ran on the school record sprint medley relay as a junior.

Named Most Improved Player for 1981 was Kristin Thomas, in her first season of track. She cut 30 seconds off her two-mile time during the season. Her 12:12 is the third fastest two mile ever and her 5:44 mile ranks fifth on Chelsea's all time list.

The Most Valuable Player on this year's team was Mary Boylan, a double champion in the league and again in the Washtenaw County Meet of Champions, where she established a new meet discus record of 113'10". She participated in the state meet for the third year in a row and finished 9th in the discus this year. She also participated in the Detroit Free Press All State meet. Her points ranked second on the team this year.

Recognized as the manager of this year's team was Tylene Greenleaf. The girls track team is coached by Bill Bainton. They finished fourth in the league and had a 5-3 dual meet record.

### Area Students Granted Degrees At Albion College

Albion College conferred degrees on 402 students at its spring commencement exercises held Saturday, May 9 on the campus quadrangle.

Local students receiving their degrees from Albion included Diana N. Pletcher, the daughter of Mr. and Mrs. David W. Pletcher of 991 Ridge Rd., Chelsea, who received a bachelor of science degree in biology; and, Daniel K. Chapman, the son of Dr. and Mrs. Daniel D. Chapman of 3430 N. Zeeb Rd., Dexter, who received a bachelor of science degree cum laude in psychology and biology.

Sen. Mark O. Hatfield, R-Oregon, delivered the commencement address to the 1981 class, their families, faculty and guests.

Hatfield, who has served in the U.S. Senate since 1967, held every major post in his state before going to Washington, D.C. He served as governor for two terms, as Oregon secretary of state, state senator and state representative.

The chairman of the Senate Appropriations Committee, one of the most prestigious on Capitol Hill, his prime interest areas include natural resources and public land issues.



You need both. Allstate homeowners insurance and mortgage protection life insurance.

Allstate's homeowners insurance will help to rebuild your house if an insured disaster strikes.

But, what if something happens to you? Who will pay off the mortgage? That's why you also need Allstate Life's mortgage protection life insurance. It helps pay off the mortgage if you die.

So your family will have help to live in a debt-free home. You need both kinds of insurance.

**Allstate**  
You're in good hands.

Allstate Insurance Company  
Allstate Life Insurance Company  
Northbrook, Ill.  
See or phone

**JANET COOLEY**  
14000 McKinley Rd.  
Chelsea  
Ph. 475-9095

## Conference Honors Won By Bulldogs

Given first team All-League honors for the 1981 varsity baseball season was unanimous choice Bulldog senior captain Jeff Dils. Named to the second team of the Southeastern Conference honor list was pitcher John Welton.

The Ann Arbor News All-Region teams were also announced recently. Made up of players from both Washtenaw and Livingston counties, shortstop Jeff Dils was awarded a place on the first team while pitcher John Welton was given honorable mention.

Finally, the Michigan High School Baseball Coaches Association (MHSCA) named Jeff Dils to their first All-Region team as a shortstop.

Tri-captains for the 1982 CHS varsity baseball season include Ross Murphy, John Preston and John Welton.

### All-Region Baseball Team

**FIRST TEAM**  
John McKee, South Lyon  
Todd Aeschliman, Dexter  
Jed Shilling, Milan  
Chris Munce, Brighton  
Jeff Dils, Chelsea  
Steve Stanley, Brighton  
Billy Wagner, Whitmore Lake  
Eric Leidehiser, Saline  
Nick Krzyzaniak, Manchester  
Jim Phelps, Saline  
Tom Malcolm, Manchester  
Marty Wallich, Tecumseh

### All Region Baseball Team

**SECOND TEAM:**  
Bill West, Lincoln  
Tom Garrett, South Lyon  
Chris Johnson, Saline  
Rob Ianni, Dexter  
John Keller, Brighton  
Bob Zimmerman, Clinton  
Mike Rosati, Pinckney  
John Depp, Milan  
Rob Bennett, South Lyon  
Eugene Kist, Dexter  
Dale Porterfield, Clinton

### HONORABLE MENTION:

Rod Robeson, Chelsea  
Mike Claffey, Dexter  
John Welton, Chelsea  
Randy Ralford, Dexter

## High School Athletic Awards Presented at Sports Banquet

Monday evening, June 1 marked the Chelsea High school spring sports banquet where students participating in the organized varsity sports of baseball, softball, tennis and track were recognized for their efforts during the 1981 season.

In baseball, senior captain Jeff Dils was awarded Most Valuable Player honors by Coach Wayne Welton as based on his abilities, leadership qualities and over-all outstanding performance. Dils hit .308 this season and made just four defensive errors at shortstop this season. He had a .571 on base batting average.

Most Improved player was sophomore Rod Robeson who exhibited great improvement in his over-all game while

demonstrating excellent leadership qualities.

Sluggger of the Year honors were tied with two players. John Welton, with a .343 batting average, struck out just two times in 72 chances at the plate.

Senior Jeff Dils was named the second Sluggger of the Year. Fine pitching was also recognized; John Welton was honored for having a season win loss record of 4-3 and an ERA of 2.13.

Given honors for their softball finesse were Most Valuable Players Anita Powell and Jennifer Ringe. Shelly Weber took the Most Improved Player status as offered by Coach Charles Waller.

Tennis Coach Terri Schreiner

deemed Steve Wilson and Craig Thams worthy to share the Most Valuable Player status. No MIP was selected.

In boys track, Bob Benedict was honored as Most Valuable Player while Todd Sprague was chosen as Most Improved Player.

Coach Bill Bainton awarded Mary Boylan the Most Valuable Player award following her fine senior year of girls track. Kristin Thomas was selected as Most Improved Player.

In addition to the designated awards, all participants were awarded varsity letters for their efforts.

In 1790 only five percent of the American population lived in cities.

## Baseball Camp Opening June 15 at EMU Stadium

Oak's Baseball Camp will begin Monday, June 15 and will continue through Friday, June 19. Registration will be held at 9 a.m. Monday, June 15 at the Eastern Michigan University Baseball Stadium. Persons ages 10 through 14 are eligible to participate.

The camp will be held daily from 9 a.m. to 12-noon. If necessary, an afternoon session for 13- and 14-year-olds may be held.

Coaching staff will include Ron

Oestrike, head coach, EMU; Roger Coryell, assistant coach, EMU and head coach Adray Photo; Mark Chicoline, assistant coach, EMU and NCAA All-American catcher in 1980; Tim MacKinnon, assistant coach, EMU and former assistant coach, Wayne State University; and, members of the Eastern Michigan University baseball team.

The camp is sponsored by the Ypsilanti Savings Bank. A registration fee will be charged.



We sell these original equipment manufacturer's parts for the do-it-yourselfer



... plus more than 250 other brand lines from our large parts inventory!

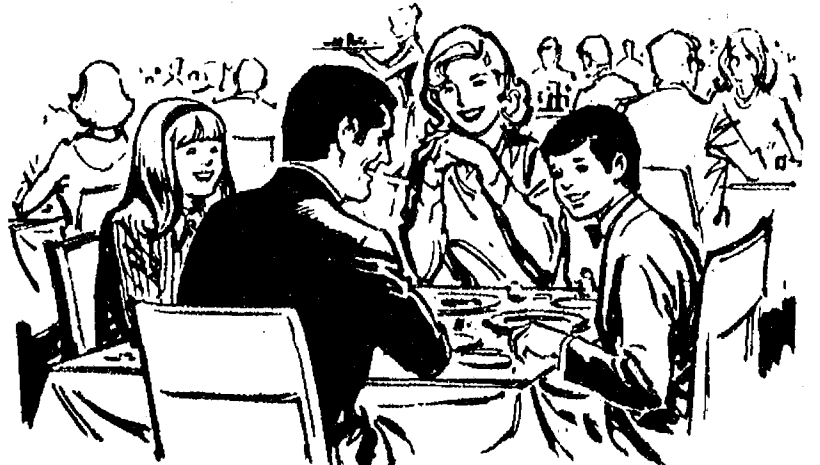
**A&L PARTS, INC**

For 63 years, one of Michigan's largest full-line distributors of original equipment manufacturer's parts

529 South Main Ann Arbor 313/665-4411

## THE CAPTAINS TABLE

A Pleasant Place To Dine



### WEEK-END EVENING SPECIALS

FRIDAY and SATURDAY

PRIME RIB ..... sm. \$7.95  
lg. \$9.95

FRIDAY

LAKE SUPERIOR WHITEFISH ..... \$5.95

with salad bar

Choose from our scrumptious home-made Dessert Cart

## THE CAPTAINS TABLE

8093 MAIN ST., DEXTER  
PH. 426-3811

**OUR VOLUME ALLOWS US TO TAKE DEALS OTHER DEALERS WON'T TOUCH!**

**REGISTER NOW AT RAMPY'S FOR FA-50 DRAWING**

**RAMPY CHEVROLET/SUZUKI**

**Suzuki 1981 The Performer.**

**\$100 REBATE ON CERTAIN MODELS DIRECT TO CUSTOMER FROM SUZUKI**

**OVER 200 IN STOCK**

**STREET BIKES**

MODEL	REG. PRICE	SALE PRICE
GS1100E	\$4,099	\$3,680
GS1000GL	\$4,099	\$3,675
GS1000G	\$4,049	\$3,630
GS850GL	\$3,559	\$3,235
GS850G	\$3,449	\$3,090
GS750L	\$3,199	\$2,880
GS750E	\$3,099	\$2,815
GS650GL	\$2,869	\$2,605
GS650G	\$2,849	\$2,590
GS650E	\$2,669	\$2,450
GS550L	\$2,514	\$2,305
GS550T	\$2,494	\$2,294
GS450S	\$1,964	\$1,845
GS450L	\$1,924	\$1,815
GS450T	\$1,914	\$1,774
GS450E	\$1,874	\$1,724
GN400T	\$1,705	\$1,595
GN400X	\$1,529	\$1,430
GS250T	\$1,529	\$1,430

**MOTORCROSS**

MODEL	REG. PRICE	SALE PRICE
RM60	\$ 724	\$ 675
RM80	\$ 789	\$ 730
RM100	\$1,234	\$1,075
RM125	\$1,639	\$1,399
RM250	\$2,054	\$1,725
RM465	\$2,254	\$1,885

**FABULOUS FIFTIES**

MODEL	REG. PRICE	SALE PRICE
JR50	\$ 504	\$455
FA50	\$ 474	\$435
FA50M	\$ 474	\$435
F250	\$ 624	\$555
F550	\$ 644	\$575

**DUAL PURPOSE**

MODEL	REG. PRICE	SALE PRICE
TS100	\$ 904	\$ 835
TS125	\$1,124	\$1,015
TS185	\$1,244	\$1,110
TS250	\$1,619	\$1,415
SP500	\$1,974	\$1,745

**FREE SUZUKI FA-50 TO BE GIVEN AWAY SATURDAY JUNE 13TH AT 2 P.M.**

**GRAND OPENING SALE**

**WEEK OF JUNE 8TH THRU 13TH**

**ALL MODELS ON SALE**

**BEST WARRANTY ON THE MARKET-STREET BIKES - 12 MO. UNLIMITED MILEAGE**

Must be 18 years or older to register for drawing

**REGISTER NOW**

**RAMPY CHEVROLET**

AND

**SUZUKI MOTORCYCLES**


OPEN MON. & THURS. til 9, SATURDAY 9-5

3515 JACKSON RD. at Wagner 663-3321

**FOR FA50 TO BE GIVEN SATURDAY, JUNE 13, 2 P.M.**

**SUZUKI**





***Class C Baseball Results***  
 Manchester 4, Napoleon 3  
 Michigan Center 7, Manchester 2

***Class D Baseball Results***  
 Gabriel Richard 11, Morenci 0  
 Gabriel Richard 7, Whitmore Lake 0

6020 Ann Arbor Road • (517) 764-1200



# Church Services

## Methodist--

**SALEM GROVE UNITED METHODIST**  
350 Notten Rd.  
The Rev. Ronald Brunger, Pastor  
Every Sunday—  
9:30 a.m.—Sunday school.  
10:30 a.m.—Morning worship.  
7:00 p.m.—Youth Fellowship.

**FIRST UNITED METHODIST**  
Parks and Territorial Rds.  
The Rev. Larry Nichols and  
The Rev. David Goldsmith, Pastors  
Every Sunday—  
9:15 a.m.—Morning worship.  
10:00 a.m.—Sunday school.

**WATERLOO VILLAGE UNITED METHODIST**  
8118 Washington St.  
The Rev. Larry Nichols and  
The Rev. David Goldsmith, Pastors  
Every Sunday—  
10:00 a.m.—Sunday school.  
11:15 a.m.—Worship service.

**FIRST UNITED METHODIST**  
The Rev. Marvin H. McCallum, Pastor  
Tuesday, June 9—  
8:00 p.m.—The Outreach Committee will meet in the Education Building.  
Wednesday, June 10—  
12:00 p.m.—Share and Study group will meet in Room 6 of the Education Building.  
Thursday, June 11—  
9:30 a.m.—Church Women United Area Meeting in the large instruction room, upstairs in the Education Building.  
7:00 p.m.—The Evening Share and Study Group will meet in the Education Building.  
Sunday, June 14—  
9:00 a.m.—Worship nursery, crib nursery.  
10:00 a.m.—Worship service. Crib nursery for infants up to the age of two and church school for children ages two through second grade.  
6:00 p.m.—The Senior High U.M.Y.F. will meet.

**NORTH LAKE UNITED METHODIST**  
The Rev. John Elliott, Pastor  
Every Sunday—  
10:00 a.m.—Worship service. Nursery provided for children up to second grade.  
10:30 a.m.—Christian Education.  
5:00 p.m.—U.M.Y.F.

**CHELSEA FREE METHODIST**  
7665 Werker Rd.  
Mearl Bradley, Pastor  
Wednesday, June 10—  
3:30 p.m.—Children's choir.  
7:30 p.m.—Growth Groups II and III.  
Saturday, June 13—  
Church Work Day.  
Sunday, June 14—  
9:45 a.m.—Sunday school.  
11:00 a.m.—Worship service.  
6:00 p.m.—Evening worship.

**METHODIST HOME CHAPEL**  
The Rev. Ira Wood, Chaplain  
Every Sunday—  
8:35 a.m.—Worship service.

**SHARON UNITED METHODIST**  
The Rev. Ronald L. Figgins, Pastor  
Corner Pleasant Lake Rd. and M-52  
Every Sunday—  
10:00 a.m.—Sunday school.  
11:00 a.m.—Worship service.

**CONGREGATIONAL**  
The Rev. Carl Schwarm, Pastor  
Every Sunday—  
9:30 a.m.—Worship. Nursery provided for pre-schoolers.  
Second Thursday—  
1:00 p.m.—Women's Fellowship.  
Weekly Bible study—As scheduled in Sunday bulletin.  
Youth groups—As scheduled in Sunday bulletin.

**ST. JOHN'S**  
Rogers Corners, Waters and Fletcher Rds.  
The Rev. Gary Kwiatek, Pastor  
Every Sunday—  
10:30 a.m.—Worship and Sunday school.

**Episcopal--**  
**ST. BARNABAS**  
The Rev. Fr. Jerrold F. Beaumont, B.S.P.  
Every Sunday—  
10:00 a.m.—Holy Communion first, third and fifth Sundays.  
10:00 a.m.—Morning prayer, second and fourth Sundays.  
Church school and nursery every Sunday.  
The first Sunday of the month is a Family Worship Service. Coffee hour follows all Sunday services. Bishop's Committee first Sunday of every month. Episcopal Church Women third Sunday of the month.  
Every Wednesday—  
7:30 p.m.—Holy Communion.

**Assembly of God--**  
**FIRST ASSEMBLY OF GOD**  
The Rev. Richard Coury, Pastor  
Every Sunday—  
9:45 a.m.—Sunday school.  
11:00 a.m.—Worship service.  
6:00 p.m.—Evening worship.  
Every Wednesday—  
7:00 p.m.—Christ's Ambassadors. Bible study and prayer.

**Non-Denominational--**  
**CHELSEA CHURCH OF THE UNCOMPROMISING WORD**  
11452 Jackson Rd.  
The Rev. Chuck Clemons, Pastor  
Every Sunday—  
10:00 a.m.—Sunday school.  
11:00 a.m.—Morning worship.  
6:30 p.m.—Evening worship.  
Every Wednesday—  
7:00 p.m.—Midweek prayer and Bible study.

**IMMANUEL BIBLE**  
The Rev. Ron Little, Pastor  
Every Sunday—  
9:45 a.m.—Sunday school, nursery provided.  
11:00 a.m.—Morning worship, nursery provided.  
6:00 p.m.—Evening worship.  
Every Wednesday—  
7:00 p.m.—Family hour, prayer meeting and Bible study.

**COVENANT**  
Dr. R. J. Ratzlaff, Pastor  
K of C Hall, W. Old US-12  
Every Wednesday—  
8:00 p.m.—Choir.  
Every Saturday—  
9:00 a.m.—Confirmation class.  
Every Sunday—  
9:45 a.m.—Sunday school.  
11:00 a.m.—Worship service. Nursery provided.

## Lutheran--

**ST. JACOB EVANGELICAL LUTHERAN**  
The Rev. Andrew Bloom, Pastor  
12601 Riehmiller Rd., Grass Lake  
Every Sunday—  
9:00 a.m.—Sunday school.  
10:15 a.m.—Divine services.

**ST. THOMAS EVANGELICAL LUTHERAN**  
Ellsworth and Haab Rds.  
The Rev. Paul Pulte, Pastor  
Every Sunday—  
9:30 a.m.—Sunday school.  
10:45 a.m.—Worship service.

**FAITH EVANGELICAL LUTHERAN**  
8675 North Territorial Rd.  
The Rev. Mark Porinsky, Pastor  
Wednesday, June 10—  
8:00 p.m.—Counsel.  
Saturday, June 13—  
8:30 a.m.—Board of Education.  
Sunday, June 14—  
8:45 a.m.—Sunday school, adult class.  
10:00 a.m.—Worship service with Communion.  
Sermon on Matthew 12:43-45.  
11:00 a.m.—Coffee hour.  
7:30 p.m.—Inquirers.  
Monday, June 15—  
6:30 p.m.—Ladies Aid pot-luck at Jo Jeleles.

**OUR SAVIOR LUTHERAN**  
1515 S. Main, Chelsea  
The Rev. Franklin H. Giebel, Pastor  
Broadway Sunday—  
Watch "This is the Life."  
7:00 a.m.—WXYZ, channel 7, Detroit.  
"The Church of the Lutheran Hour."  
8:35 a.m.—WIBM, 1450 AM, Jackson.  
12:30 p.m.—WYFC, 1520 AM, Ypsilanti.  
Every Sunday—  
9:00 a.m.—Sunday school.  
10:30 a.m.—Morning worship.  
Every Monday—  
3:45 p.m.—7th grade confirmation.  
6:30 p.m.—8th grade confirmation.  
Every Thursday—  
7:00 p.m.—Adult Information Class.

**ZION LUTHERAN**  
Corner of Fletcher and Waters Rds.  
The Rev. John R. Morris, Pastor  
Tuesday, June 9—  
4:00 p.m.—Joy-makers.  
7:15 p.m.—Senior Choir.  
Wednesday, June 10—  
7:30 p.m.—Church council.  
Sunday, June 14—  
9:00 a.m.—Sunday school and adult inquiry class.  
10:15 a.m.—Worship service.  
Monday, June 15—Friday, June 19—  
Zion Lutheran church Bible school for ages 3 years through 6th grade.

**Church of Christ--**  
**CHURCH OF CHRIST**  
13661 Old US-12, East  
Evangelist Robert B. Murray  
Every Sunday—  
7:30 a.m.—Radio program-WNRS in Saline.  
9:30 a.m.—Bible study.  
10:30 a.m.—Worship service. Nursery available.  
6:00 p.m.—Worship service.  
Every Wednesday—  
7:30 p.m.—Bible study classes for all ages.

## Catholic--

**ST. MARY**  
The Rev. Fr. David Philip Dupuis, Pastor  
Every Saturday—  
5:00 p.m.—Mass.  
7:00 p.m.—Mass.  
Confessions immediately following Mass on Saturday.  
Every Sunday—  
7 a.m., 9 a.m. and 11 a.m.—Mass.

**United Church of Christ--**  
**ST. JOHN'S EVANGELICAL AND REFORMED**  
Francisco  
The Rev. Paul McKenna, Pastor  
Every Sunday—  
10:30 a.m.—Sunday school and worship service.  
First Sunday of every month—  
Communion.

**BETHEL EVANGELICAL AND REFORMED**  
Freedom Township  
The Rev. Roman A. Reineck, Pastor  
Every Sunday—  
10:00 a.m.—Worship service.

**ST. PAUL**  
The Rev. Erwin R. Koch, Pastor  
Tuesday, June 9—  
8:00 p.m.—Board of Christian Education meeting.  
Wednesday, June 10—  
4:15 p.m.—Youth Choir, last rehearsal.  
Sunday, June 14—  
9:00-10:30 a.m.—Church school.  
10:30 a.m.—Morning worship. Children's Day Service. Theme: "Stories, Old and New." Teacher recognition. Stepping stones for all participating children. Promotion Sunday.  
Monday, June 15—Sunday, June 20—  
8:30 a.m.—7th and 8th grade confirmation classes leave for a trip to Chicago and St. Louis.

**Presbyterian--**  
**FIRST UNITED PRESBYTERIAN**  
Unadilla  
William D. Kuenzli, Pastor  
Every Sunday—  
9:45 a.m.—Sunday school.  
11:00 a.m.—Worship service.

**Christian Scientist--**  
**FIRST CHURCH OF CHRIST SCIENTIST**  
1883 Washtenaw Ave., Ann Arbor  
Every Sunday—  
10:30 a.m.—Sunday school, morning service.

## Church of Christ Vacation Bible School Starts June 15

Chelsea Church of Christ will sponsor a free, week long vacation Bible school for area youngsters and adults. Children and adult classes will be taught by the church's Sunday school teachers and begin Monday, June 15 at 7:30 p.m. at the church located at 13661 Old US-12. The public is invited.

**MT. HOPE BIBLE**  
12884 Trist Rd., Grass Lake  
The Rev. R. H. Brandow, Pastor  
Every Sunday—  
10:00 a.m.—Sunday school.  
11:00 a.m.—Morning worship.  
7:00 p.m.—Evening service.  
Every Wednesday—  
7:00 p.m.—Bible study.

**NORTH SHARON BIBLE**  
Sylvan and Washburne Rds.  
The Rev. William Enslin, Pastor.  
Every Sunday—  
10:00 a.m.—Sunday school.  
11:00 a.m.—Worship service.  
6:00 p.m.—Senior High Youth meeting. Youth choir.  
7:00 p.m.—Evening worship service. (Nursery available.) All services interpreted for the deaf.  
Every Wednesday—  
7:00 p.m.—Bible study and prayer meeting. (Nursery available.) Bus transportation available: 428-7222.

**CHELSEA CHRISTIAN MEN'S FELLOWSHIP PRAYER BREAKFAST**  
Chelsea Hospital Cafeteria.  
First Saturday Each Month—  
8:00 a.m.—Breakfast.  
8:30-10:00 a.m.—Program.

**CHELSEA HOSPITAL MINISTRY**  
Every Sunday—  
10:00 a.m.—Morning service, Chelsea Community Hospital Cafeteria.

**Church of the Nazarene--**  
**SOUTHWEST CHURCH OF THE NAZARENE**  
14555 Holmes Rd. (M-106)  
Fred Bridge, Pastor  
Every Sunday—  
10:00 a.m.—Sunday school.  
11:00 a.m.—Morning worship.  
6:00 p.m.—Evangelical service.  
Every Wednesday—  
7:00 p.m.—Bible Study and Prayer Meeting.

**Mormon--**  
**CHURCH OF JESUS CHRIST OF LATTER-DAY SAINTS**  
Chelsea Branch-Rebekah Hall  
Every Sunday—  
9:30 a.m.—Sacrament.  
10:50 a.m.—Sunday school.  
11:40 a.m.—Priesthood.

**Baptist--**  
**CHELSEA BAPTIST**  
337 Wilkinson St.  
The Rev. Thode B. Thodeson, Pastor  
Every Sunday—  
10:00-10:45 a.m.—Church school.  
10:50 a.m.—Morning worship.  
11:20 a.m.—Junior church school.  
6:00 p.m.—Evening fellowship.  
Every Wednesday—  
7:00 p.m.—Mid-week Bible study and prayer.

**GREGORY BAPTIST**  
The Rev. David Brinkman, Pastor  
Every Sunday—  
9:45 a.m.—Sunday school.  
11:00 a.m.—Morning worship.  
6:00 p.m.—Young people.  
7:00 p.m.—Evening worship.

Telephone your club news to 475-1371.

## Free Methodists Offer Vacation Bible School

Chelsea's Free Methodist church, located at 7665 Werker Rd., will host a week of Vacation Bible School in their new church building June 15-19. Children in the community, grades 1-7 are invited to learn and celebrate God's word each day that week 9 to 11:30 a.m.

This year is the first time a Vacation Bible School has been hosted by the Free Methodist church in the Chelsea area. A unique program is planned which does not utilize individual classroom teachers but delivers a message to graded groups, 1-4 and 5-7, by use of films, flannelgraph, and storytelling. Included each day will be scripture memorization as well as crafts and recreation. The program is open to all children in the Chelsea area.

For more information call the Chelsea Free Methodist church, 475-1391.

## New Owner for Touch of Class Beauty Salon

Joyce Spencer of Roepke Rd., Gregory has purchased the Touch of Class Hairstyling business at 1196 S. M-52, Chelsea, and assumed management Monday, June 8.

Nola Freysinger, the former owner will assist as an operator. Mrs. Raymond Canine of Chelsea is Mrs. Spencer's mother.

## Confirmation Class Registration Closes July 1 at St. Mary's

The Sacrament of Confirmation will be administered in the spring of 1982 at St. Mary's Parish. All those wishing to be candidates for this Sacrament will be required to attend special classes in preparation for it.

Registration for these classes will be closed as of Wednesday, July 1. The registration for all other classes will also be closed as of the July 1 dates. Students ranging in age from three years through high school are eligible to participate.

Persons interested in attending any of the classes are asked to call Sister Pat and the staff at the Religious Education Office at 475-8164, Monday through Thursday, 9:30 a.m. to 12:30 p.m.

## Births

A daughter, Jessica Shay Duncan, Friday, May 29, St. Joseph Mercy Hospital, Ann Arbor to Gary and Carol Duncan Poore, 18989 Wolff Rd., Manchester. Maternal grandparents are Lyle and Myrtle Duncan of Dexter. Mrs. Poore graduated from Dexter High School.

A daughter, Susan Marie, Friday, May 29 to Donald and Marilyn Hinderer of Caro. Maternal grandparents are Mr. and Mrs. Norman Wenk of Chelsea. Paternal grandparents are Mr. and Mrs. Norman Hinderer, also of Chelsea. Maternal great-grandmother is Ottilie Hieber of Saline. Paternal great-grandmother is Nina Wahl of Grass Lake.

A son, Christopher John, Sunday, May 24 in Royal Oak, to Mr. and Mrs. John R. Trudell. Maternal grandparents are Mr. and Mrs. A. E. Fuls of Madison St. Paternal grandmother is Mrs. J. H. Trudell of Delray Beach, Fla.

Please Notify Us of Any Change in Address

**FREE VACATION BIBLE SCHOOL**  
**JUNE 15 - 19**  
**7:15 p.m.**  
**Everyone Is Invited!**  
**CHELSEA CHURCH OF CHRIST**  
13661 Old US-12, Chelsea Ph. 475-8458

**What's There To Do?**

To give your children the start of a meaningful summer vacation Immanuel Bible Church on East Summit Street has planned five exciting evenings of Vacation Bible School. Dennis Petsch who coaches in Chelsea's Little League will do a dramatization of *A New Life For Irom* each evening. Fun songs, contests, creative crafts, cookies and lessons on the theme "Jesus Your Word Lives In Me" will be part of each evening's enjoyable program.

This year's Daily Vacation Bible School will be June 15-19 from 6:30-8:30 p.m. for children 4 through those going into 8th grade. Our closing exercise will feature the Friedle family who, having ministered with their puppets in churches, camps, and children's crusades, will be illustrating the lessons: Jesus Help Me Understand Your Word, Jesus I Will Praise You, Jesus I Will Obey You, Jesus I Will Live For You, and Jesus I Will Wait for Your Return. Parents are invited to our closing on Friday to watch the puppets. Please feel free to call 475-8936 if there are any questions.



JOHN W. MITCHELL, Director

Serving with dignity and concern for more than 100 years.

**Staffan**

**FUNERAL HOME**  
124 PARK CHELSEA, MICHIGAN 48118

FUNERAL DIRECTORS FOR FOUR GENERATIONS

## HOME - AUTO - BUSINESS - LIFE

# SPRINGER AGENCY, INC.

(formerly the Mayer Agency)

Your Local Independent Insurance Agency providing dependable protection and prompt claim payment through 10 of the nation's leading insurance companies.



Sheridan W. Springer

Ruth Devine

115 Park St., Chelsea, Mich.

475-8689

Elaine Yocum

Donald S. Peck

Marilyn Holt

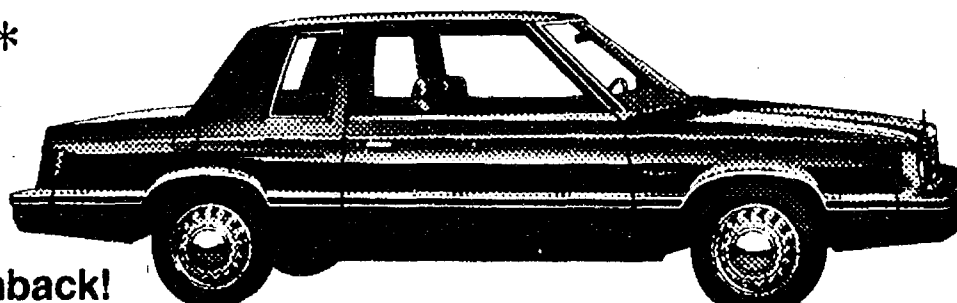
## IT'S A K-BOOM AT VILLAGE MOTORS!

**SALES OF PLYMOUTH RELIANT K CARS ARE EXPLODING!**

FRONT-WHEEL-DRIVE PLYMOUTH RELIANT K COUPE.  
AMERICA'S HIGHEST MILEAGE 6-PASSENGER COUPE!

**\$5995\***

That's \$391\* less than Chevy Citation 2-Dr. Hatchback!



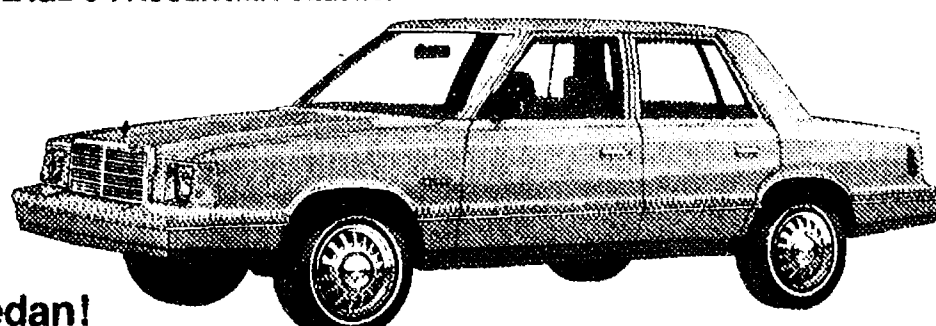
Reliant has a higher mileage rating than this Citation.

**41 25**  
EST HWY EPA EST MPG

FRONT-WHEEL-DRIVE PLYMOUTH RELIANT K SEDAN.  
AMERICA'S HIGHEST MILEAGE 6-PASSENGER SEDAN!

**\$6131\***

Reliant is \$604\* less than Ford Granada L 4-Dr. Sedan!



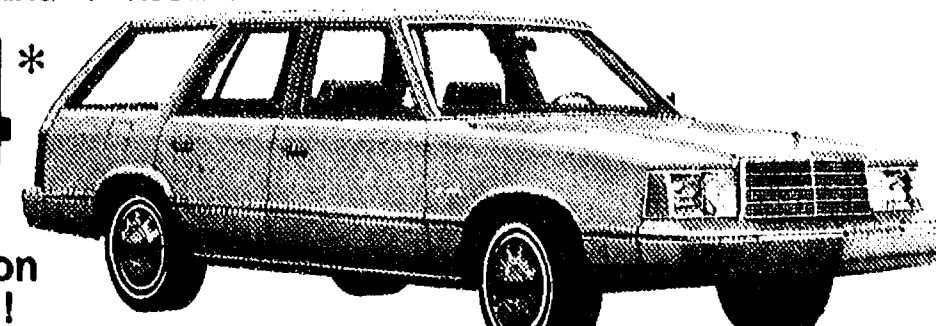
That's higher mileage than this Ford Granada.

**41 25**  
EST HWY EPA EST MPG

FRONT-WHEEL-DRIVE PLYMOUTH RELIANT K WAGON.  
AMERICA'S HIGHEST MILEAGE 6-PASSENGER WAGON!

**\$6854\***

Reliant beats Olds Cutlass Wagon in price. By \$1098\*!



Reliant beats Olds Cutlass Wagon in mileage!

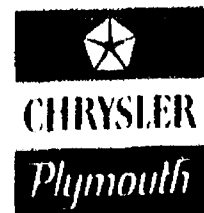
**40 24**  
EST HWY EPA EST MPG

\*Base sticker price. Title, taxes, destination charges extra. Price comparisons unadjusted for varying levels of standard equipment. WSW tires \$55 extra. †Use EPA estimated mpg figure for comparison. Your mileage may vary depending on your speed, trip length and weather conditions. ‡Actual highway mileage will probably be less.

TAKE THE \$50 TEST DRIVE!

Get \$50 to test-drive a new 1981 Plymouth Reliant K if you buy it or a qualifying competitive new car within 30 days of test drive. One check per customer. See us for full details. We're your participating dealer.

OUR RELIANT K-BOOM CAN MEAN SPECTACULAR DEALS FOR YOU.  
SEE US NOW!



**VILLAGE MOTOR SALES, INC.**  
1185 MANCHESTER RD. CHELSEA, MICH.



## Girl Scout Cadette Troop 98 Holds Awards Ceremony

On Monday, May 18 Cadette Troop 98 held its awards ceremony at the Chelsea United Methodist Retirement Home. Guests of honor were the Methodist Home residents who are members of Senior Troop 777 and their leader, Connie Amick. Awards earned by all the girls throughout the year were presented to them by their leaders, Chris Nyhof and Sandy Patterson. Two Cadettes, Jimae Ritter and Julie Thompson, had the honor of receiving their First Class Scout Award. They are the first to receive it in Chelsea for a number of years. The entire program was planned by the girls. Skits were performed, a poem in honor of the leaders was recited and a piano solo was played. Refreshments for everyone were also provided by the girls. Special thanks were given by the girls to the Phyllis Vaillencourt, the troop's former leader, Nanette Havens, its cookie chairman, and to the troop's present leaders and first aider. Family members and friends of the Cadettes were in attendance. It was a pleasant evening for all present.

Michigan State University conducts one of the nation's leading continuing education programs in veterinary medicine.

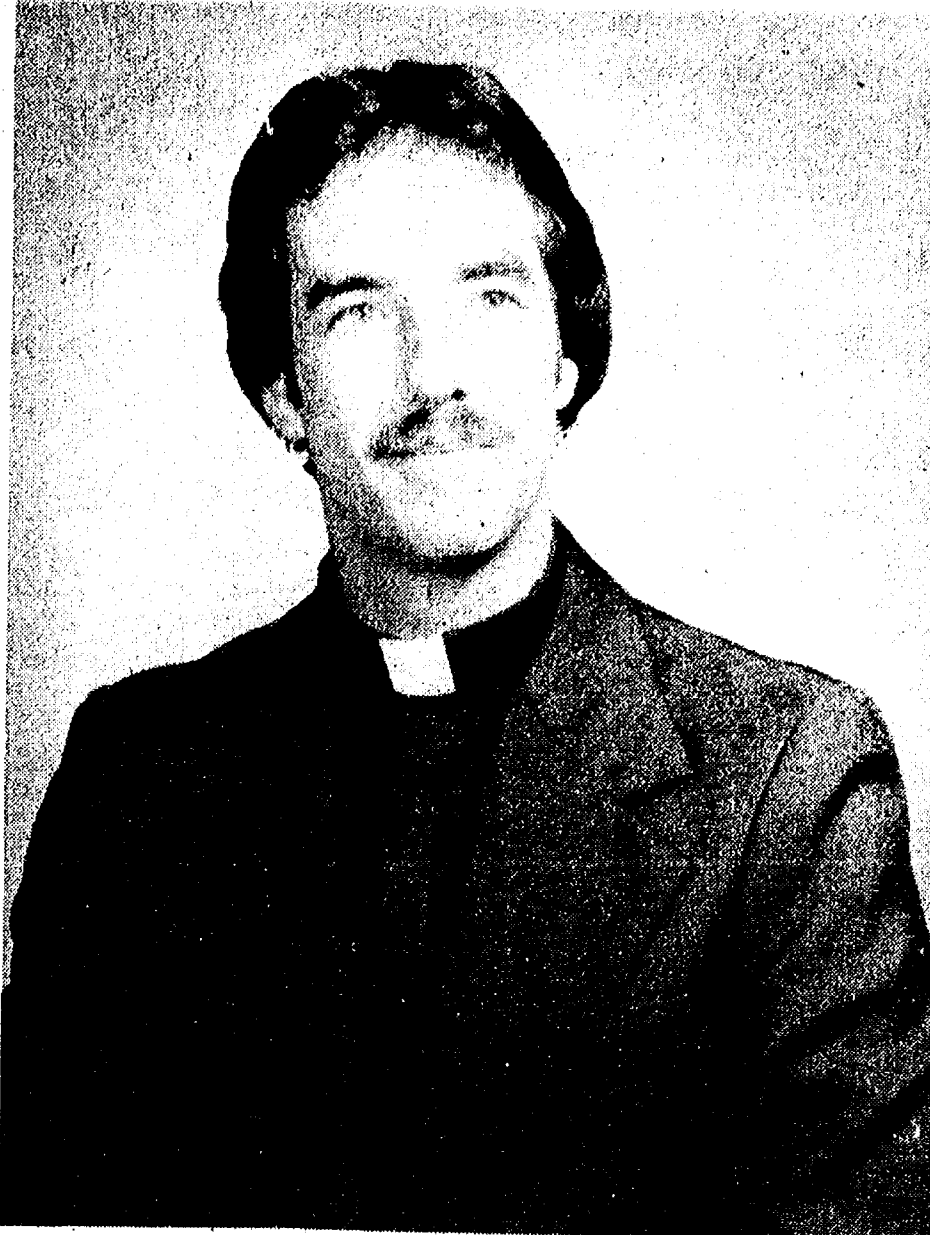
## Sylvan Township Board Proceedings

**Regular Meeting**  
June 2, 1981  
Meeting was called to order by Supervisor Sweeney with the following members present: Treas. Pearsall, Trustee Carruthers, Trustee Lesser and Clerk Harris.  
Minutes of the last meeting were read and approved.  
Bills were presented by the Clerk. Motion by Pearsall, supported by Harris, that orders be drawn and bills be paid. Motion carried.  
Carl Heldt presented a report on zoning permits issued.  
Motion by Carruthers, supported by Pearsall, to accept Public Act 116 for Norman Hinderer and Reuben Lesser. Motion carried.  
Mr. Winzenz was present to ask for clarification of the zoning ordinance pertaining to land being split and on roads.  
James Liebeck presented the Ordinance that has been written on Mobile Homes. Motion by Lesser, supported by Carruthers, to accept the proposed amendment as presented. Motion carried.  
Motion by Lesser, supported by Harris, to pay the Chelsea Recreational Council \$1000.00. Motion carried.  
Meeting was adjourned at 8:37 p.m.

Mary Harris, Clerk.

## Dexter Township Board Proceedings

**Regular Meeting**  
Date: Tuesday, June 2, 1981, 7:30 p.m.  
Place: Dexter Township Hall.  
Present: Arlene Howe, Forrest Begres, William Eisenbeiser, and Ed Bouillon.  
Meeting called to order by the Supervisor, Arlene Howe. Agenda approved as submitted.  
Moved by Bouillon, supported by Eisenbeiser, to approve the minutes as presented. Carried.  
Treasurer's Report — Enclosed.  
Moved by Bouillon, supported by Eisenbeiser, to accept the treasurer's report. Carried.  
Moved by Begres, supported by Bouillon, to approve payment of the bills as submitted. Carried.  
Discussion of tree removal on North Territorial; 40 people present plus rep. from Road Commission.  
Moved by Begres, supported by Bouillon, that the Township ask the Washtenaw County Road Commission to stop the removal of additional trees until the Township Board has been convinced of the necessity of the project. All ayes. Carried.  
Presentation by Jack Snyder regarding the combining lots in Half Moon Subdivision.  
Moved by Bouillon, supported by Begres, to table action on the access easement requested by Jim Fahey. Carried.  
Moved by Bouillon, supported by Begres, to accept the duties of the Zoning Inspector, as drafted 5/26/81, excluding item IV-2. Carried.  
Moved by Bouillon, supported by Begres, to pay the Zoning Inspector \$325 per month. 3-1. Carried.  
Zoning Inspector's report—Enclosed.  
Moved by Eisenbeiser, supported by Begres, to pay Marjorie Alexander \$370 for the completion of the 1980 Assessing. Carried.  
Moved by Eisenbeiser, supported by Begres, to continue membership in Michigan Township Association for 1981 and pay the dues of \$1,005.80. Carried.  
Moved by Eisenbeiser, supported by Begres, to approve the proposed letter to the taxpayers regarding a re-appraisal. Carried.  
Moved by Eisenbeiser, supported by Bouillon, to hire Arlene Howe as the Township Appraiser at a salary of \$7,500 per year with the pay schedule as outlined in the letter of May 25, 1981. Carried.  
Moved by Eisenbeiser, supported by Bouillon, to pass the following resolution:  
"Resolve that any elected official of Dexter Township may participate in P. A. 457 deferred compensation, if desired." Effective June 2, 1981. Carried.  
Moved by Eisenbeiser, supported by Bouillon, to authorize the treasurer to get landfill stickers printed. Carried.  
Moved by Eisenbeiser, supported by Bouillon, to adjourn the meeting. Carried.  
Respectfully submitted, William Eisenbeiser, Clerk.



CARL SCHNEIDER

## Manchester Man To Be Ordained Next Sunday

Carl Schneider of Manchester will be ordained at St. Thomas Lutheran church, Ann Arbor (Freedom township), on Sunday, June 14 in a special service to be held at 3:00 p.m. Schneider will be the first son of the congregation in its more than 140-year history to enter the ministry. He is the son of Mr. and Mrs. Clarence Schneider of Manchester. On June 25, 1977 he was married to Patti Boerger of Northville and they are expecting their first child in December.

## Lima Township Board Proceedings

**Regular Meeting**  
June 1, 1981  
The regular meeting of the Lima Township Board was called to order at 8:05 p.m. on June 1, 1981 by Supervisor Bauer.  
Present were Supervisor Bauer, Clerk Bareis, Treasurer Messman, Trustees Heller and Trinkle and Zoning Inspector David Ernst.  
Approved minutes of May 4 meeting.  
The treasurer's report was received.  
The zoning inspector reported on various permits and violations.  
Approved resolution requesting the Washtenaw County Road Commission to apply to the Michigan Department of Transportation for Critical Bridge Monies for the Steinbach Road Bridge.  
Approved resolution requesting the Washtenaw County Road Commission to apply to the Michigan Department of Transportation for Critical Bridge Monies for the bridge over Luick Drain on Dexter-Chelsea Road.  
Approved motion to request Attorney Flintoft to start circuit court proceedings regarding the disbanding of the rooming house at 9165 Jackson Road, Michael Coombs.  
Approved motion to request Attorney Flintoft to proceed with the Tuttle Private Road case and forward information pertinent to this matter to him.  
Approved motion to advise Mr. DeWolfe of complaints regarding his excavating operation and ask for compliance.  
Approved applications into P. A. 116 for Rudolph & Loretta Bollinger, Joseph Taylor, and Stanley Parker.  
Approved motion to pay bills as presented.  
Approved motion to adjourn at 10:45 p.m.  
Respectfully submitted, Arlene R. Bareis, Clerk.

Schneider began his schooling at Manchester Elementary school and graduated from Manchester High school in 1972. He attended Washtenaw Community College for one year and then entered Concordia College, Ann Arbor. He received his A.A. degree from Concordia and transferred to Concordia Senior College, Fort Wayne, Ind., where he received his B.A. degree in 1977.

In the fall of 1977 Schneider began his studies at Concordia Seminary, St. Louis, Mo., which is one of two seminaries owned and operated by the Lutheran Church-Missouri Synod and has graduated more than 10,000 pastors in its 142-year history. Schneider served a year of theological internship at St. Paul Lutheran church in McAllen, Tex. before graduating on May 28 from Concordia Seminary, one of a class of 93. He has received a call to become pastor of Holy Cross Lutheran Church and St. John Lutheran church in Onida and Agar, S. D.

WKAR Radio at Michigan State University is one of the 17 public radio stations that is equipped to transmit programs via National Public Radio's satellite distribution system to the more than 200 public radio stations across the country.

## BRODERICK TIRE

889 S. MAIN, CHELSEA  
Ph. 475-1261

Open 8 a.m. to 6 p.m. daily

## JUNE SPECIAL

Front End Alignment

AND

Spin Balance 2 Front Tires

**\$29.88\***

CALL FOR APPOINTMENT

\*Most American & Foreign Cars

## CLOSE-OUT TIRE SPECIAL

4-Ply Polyester Whitewalls

F 78-14 ..... \$33.88 FREE

G 78-14 ..... \$34.88 MOUNTING

H 78-14 ..... \$34.88 Prices Include F.E.T.

## EIGHTH ANNUAL OLD FASHIONED

# barn dance

SATURDAY, JUNE 20

9 p.m. 'til 2 a.m.

## CHARLES TRINKLE FARM

9631 TRINKLE RD., DEXTER

All proceeds for Special Education in Dexter, Chelsea, High Point Center



Featuring  
**LUKE SCHAIBLE BAND**  
Round, Square Dancing  
Refreshments - Set-Ups

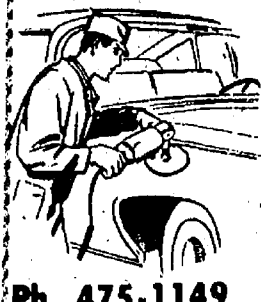
ADVANCE TICKETS - \$7 per couple, \$3.50 single  
In Dexter at The Captains Table, Bouillon Sales & Service, McLeod Pharmacy, Royal Hair Fashions. In Chelsea at Heydlauff's, McCalla Feeds, Vogel's & Foster's. In Manchester at Gambles. In Ann Arbor at Fran Coy's Hair Stylists.  
TICKETS AT THE DOOR: \$8 per couple, \$4 single

## ROBERTS PAINT & BODY

"We do our best to satisfy"

20416 Old US-12 West  
Chelsea, Mich.

Open 8 a.m.-5 p.m. Daily



Ph. 475-1149

## CATS

CHELSEA AREA

## TRANSPORTATION SYSTEM

Transportation for the Senior Citizens, 65 years & Older, & the Handicapped.

Advance reservations are required. For morning transportation call the preceding afternoon between 1 p.m. and 3 p.m. For afternoon transportation call in the morning from 9 a.m. to 11 a.m.

**CALL 475-9494**

between 9 to 11 a.m. or 1 to 3 p.m.

Service hours are 9 a.m. to 4:30 p.m. daily; Thursdays, 9 a.m. to 1 p.m.

## NAPA NOW TWO LOCATIONS



**We're over fifty years old. And still growing.**

Woodside Auto Supply is a familiar name in this community. Folks around here have counted on NAPA exhaust and other quality auto parts for years. And now you have a second location to make picking up those top quality parts even more convenient.

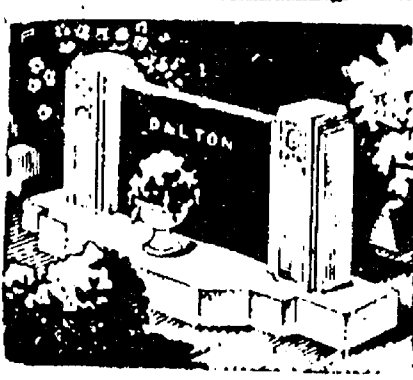
So come in today and get service and quality products that Woodside Auto Supply is famous for. After all, we've been a leader in the automotive industry for over fifty years. And we're still growing. So check out the new store. Woodside West. Your headquarters for top quality NAPA exhausts.



### NOW TWO LOCATIONS

**WOODSIDE AUTO SUPPLY**  
665-4461  
2201 S. INDUSTRIAL

**WOODSIDE WEST AUTO SUPPLY**  
995-9797  
2627 DEXTER RD.  
(formerly Note's Boot Shop)



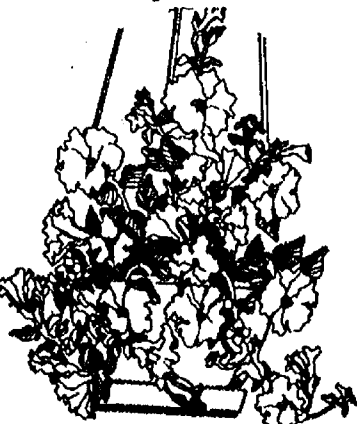
MAUSOLEUMS ★ MONUMENTS  
BRONZE TABLETS ★ MARKERS

## BECKER MEMORIALS

6033 Jackson Road  
ANN ARBOR, MICHIGAN

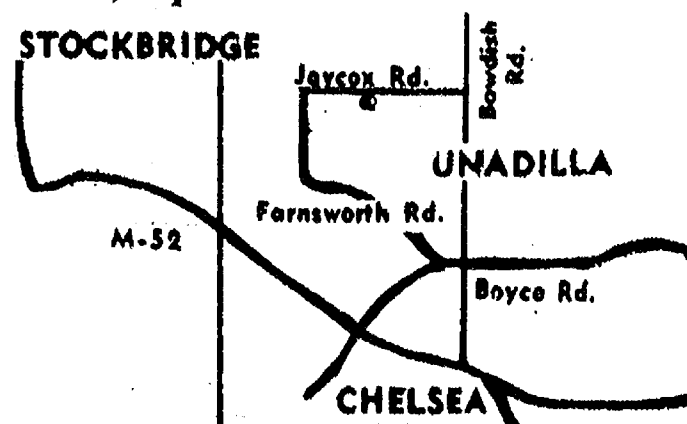
## Kaiser's Greenhouse

12700 Jaycox Rd., Stockbridge  
Open 7 Days, 8 a.m. - 9 p.m.



Geraniums  
Flowering Annuals  
Vegetable Plants  
Hanging Baskets  
Ceramics

Melon, Squash & Cucumber Plants



(517) 851-8745

## Dads & Grads Specials

### NORELCO Triple Head ELECTRIC SHAVER

Model No. HP 1132. Quantity limited.

SPECIAL  
Reg. Price \$49.95  
**\$39.95**

### KODAK Tele-Extralite 600 CAMERA

Quantity limited.

SPECIAL  
Reg. Price \$79.50  
**\$54.95**

### AMITY MEN'S TRI-FOLD BILLFOLD

Quantity limited.

SPECIAL  
Reg. Price \$9.50  
**\$6.95**

### PIERRE CARDIN MAN'S COLOGNE

Quantity limited.

SPECIAL  
Reg. Price \$15.00  
**\$7.50**

**\$5.00 OFF**

on any  
**TIMEX WATCH**

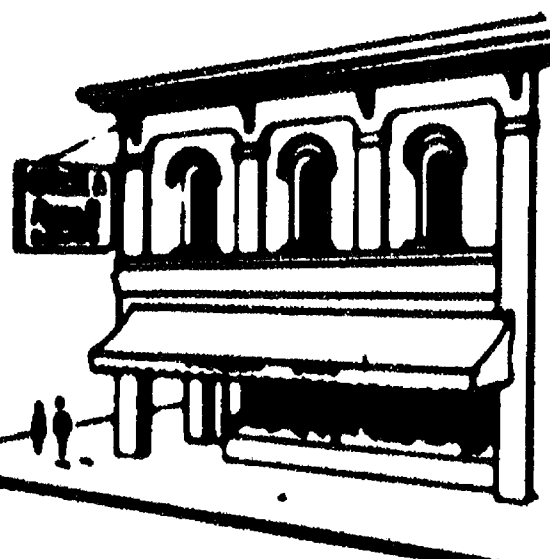
\$25 retail or over  
LIMIT 1

(Offer good June 9-20, 1981)

**\$2.00 OFF**

on any pair of  
**FOSTER GRANT SUNGLASSES**

(Offer good June 9-20, 1981)



## Chelsea Pharmacy, Inc.

101 N. Main—Chelsea

475-9103







# LITTLE WANT ADS! BIG PLUSES FOR BIG RESULTS!

For Rent 11	Bus. Services 13	Bus. Services 13	Bus. Services 13	Bus. Services 13	Financial 14	Card of Thanks 16
<b>FOR RENT</b> — 1-bedroom apartment \$250 per month. Includes utilities. Damage deposit required. References and lease. Ph. 475-7792 after 5 p.m. persistently. x1 <b>FOR RENT</b> — In Dexter, modern, 2-bedroom duplex, married couple preferred, no pets. \$295 plus utilities. Call after 5 p.m., 426-4125. x1 <b>OLDER DUPLEX</b> 1-bedroom unit for rent with covered garage. Available July 1. \$250. Ph. 475-8260. x2-2 <b>FOR RENT</b> — 2-bedroom brick, garage, basement, major appliances, 2-acres, fireplace, carpeting. Available June 15. Dexter schools. \$400. Ph. 426-4331. x1 <b>OFFICE SPACE</b> for rent on Main St. in downtown Dexter. Ph. 426-2522. x35tf <b>AMERICAN LEGION HALL</b> Rental — \$100-\$175. Ph. Lena Behnke, 475-9231, evenings and week-ends. 44tf	<b>General</b> <b>McCulloch</b> <b>Portable Generators</b> <b>Chain Saws</b> WE SELL, SERVICE SHARPEN AND TRADE <b>Chelsea Hardware</b> 21tf PIANO LESSONS available for children and adults. Graduate of the Royal Academy, London, England. Ph. (313) 231-2173. x2-3 PIANO LESSONS in my home, conveniently located on Lima Center Rd., by qualified teacher. Very reasonable rates. Ph. 475-9225. x1-2 PIANO TUNING and repair. Qualified technician. Call Ron Harris, 475-7134. x48tf <b>SUMMER TUTORING</b> — Elementary language arts. Chelsea Elementary teacher. Ph. 475-9342. x48-2tf <b>TIDY CAR</b> World's Leading Auto Appearance Specialists 2,600 Dealers World-wide <b>Spring Special</b> — Complete Interior Shampoo — Exterior Buff 'n' Shine — Chrome polished — Vinyl roof revitalized <b>\$69.95</b> Call today for an appointment <b>475-2952 or 434-3041</b> Free pick-up and delivery Same day service x1 <b>YOUR BEAUTY SALON</b> 8066 Main St., Dexter Ph. 426-8878 WELLA — KMS — ALOE-VERA Products Professional Ear Piercing Uniperm — Foam Waves Men's & Women's Hair Styling BARB WITTMAN, Owner-Operator DEBBY (Quinn) PHILBRIN, Stylist x48tf	<b>Carpentry/Construction</b> Custom Built Homes O—hl We Remodel too U—can count on us N—o Job Too Small T—rim Inside and Out R—ough-In Only if Y—ou want to Finish S—iding Aluminum, 5" Gutters I—mmediate Attention D—ALE COOK & CO. E—stimates, Free <b>BUILDERS</b> Please Call <b>475-9153</b> <b>DALE COOK</b> 17tf DRYWALL APPLICATION — Hanging, finishing, spray texture remodeling and new work a specialty. Ph. 665-3452. x34tf <b>J. R. CARRUTHERS</b> LICENSED RESIDENTIAL BUILDER CUSTOM HOMES ADDITIONS/FIREPLACES PATIOS ROOFING/SIDING/REPAIRS <b>475-7234</b> CHELSEA 30tf <b>Norval R. Menge</b> <b>Builder</b> CUSTOM BUILT HOMES ADDITIONS, REMODELING GARAGES AND POLE BARNs We also do LIGHT HAULING BACKHOE WORK GENERAL REPAIRS all our work fully guaranteed CALL FOR FREE ESTIMATES <b>475-1005</b> x44tf <b>RON BAUER</b> <b>Builders</b> LICENSED AND INSURED Custom Building Houses — Garages Pole Barns Roofing — Siding Concrete Work FREE ESTIMATES Call 475-1218 3tf <b>RON MONTANGE</b> <b>CONSTRUCTION</b> (RJM, INC.) —Full carpentry services (rough and finish) —Additions, remodeling and repairs —Concrete —Roofing and siding —Cabinets and Formica work —Metal farm buildings —Grain storage bins —Excavating and trenching QUALITY WORKMANSHIP FREE ESTIMATES Ph. 662-6126 or <b>475-1080</b> 19tf <b>Solar Construction</b> SOLAR DESIGN Construction Services. New home planning, greenhouses, additions, sunspaces, spaceheaters, hot water heaters. Years of experience. <b>Ph. 231-1728</b> x2-4 <b>Excavating</b> SAND GRAVEL <b>KLINK</b> <b>EXCAVATING</b> Bulldozer — Backhoe Road Work — Basements Trucking — Crane Work Top Soil — Demolition Drainfield — Septic Tank Trenching, 5' up Industrial, Residential, Commercial CALL 475-7631 13tf <b>LITTLE WACK</b> <b>EXCAVATING</b> Basement — Drainfields Bulldozing — Digging Snow Removal — Tree Removal LICENSED AND INSURED <b>Paul Wackenhut</b> Ph. 428-8025 52tf	<b>Excavating</b> <b>ROSENRETER</b> <b>EXCAVATING, INC.</b> Basements — Drainfields — Septic Tanks Backhoe Work — Bulldozer — Trucking Gravel — Sand — Topsoil Snow Removal 18740 M-52, Chelsea Neil Rosentreter 475-1990 Al Rosentreter 1-498-3227 2-12 WILL TRAVEL — Digging, all kinds. Basements, septic tanks, drain fields, etc. Call Markis Bailey, (517) 589-5282. x23-6 <b>Landscaping/Outdoor Maint.</b> BLACK DIRT, top soil, fill dirt, sand and gravel. Ph. 475-2722, days; 475-2596 after 6 p.m. C. L. Broderick & Son. x44tf <b>LAWN</b> <b>MAINTENANCE</b> <b>BUILDING</b> <b>MAINTENANCE</b> <b>SMALL</b> <b>LANDSCAPING</b> <b>RICHARD SMITH</b> <b>475-8984 after 5 p.m.</b> 10tf <b>Repairs/Improvements</b> <b>ALUMINUM WELDING</b> Welding of boats, outboard motors, lawn mower, and chain saw parts, etc. Also, other types of welding, brazing and burning — aluminum, steel, stainless steel, cast iron. <b>Dale Richardson</b> <b>475-7462</b> x9tf <b>Appliance Repair</b> and <b>Installation</b> Specializing in washers, dryers, dishwashers, ranges and disposals. FAST SERVICE, SENSIBLE RATES Since 1959 ALL WORK GUARANTEED <b>TED LANE</b> <b>PH. 663-2855</b> x2-3 BLACKTOP SEALING — Expertly sealed blacktop, lasts indefinitely, looks beautiful and isn't expensive. For free, no obligation estimates call The Bostwick Co. at 663-5600 or 429-4540, evenings. x2-2 BRICK MASON — Dennis Garen. Ph. 475-2584. Brick and block work. Fireplaces, chimney repair. Tuck pointing and stone work. 41tf <b>Floor Covering</b> <b>Is Our Business</b> TILE — SOLARIAN — HARDWOOD CARPET — INSTALLATION — REPAIRS FREE ESTIMATES <b>Merkel</b> <b>Home Furnishings</b> 4tf	<b>Repairs/Improvements</b> <b>HOUSE PAINTING</b> and <b>GENERAL REPAIR</b> Roofing, concrete work, windows, tree cutting... FAST SERVICE - SENSIBLE RATES ALL WORK GUARANTEED <b>CALL 475-2981</b> x1-2 <b>LEONARD REITH</b> <b>Master Plumber</b> <b>Licensed Electrician</b> <b>Hot Water Heat</b> <b>18238 N. Territorial Rd.</b> <b>Chelsea, Mich. 48118</b> <b>Phone: 475-2044</b> 52tf <b>LET GEORGE DO IT!</b> HOME REPAIR AND MAINTENANCE SERVICE <b>PHONE 475-8903</b> GEORGE ELLENWOOD 563 McKinley St. Chelsea Mich. 52tf PATCHING and PLASTERING. Call 475-7489. 33tf PLUMBING by licensed master plumber. Quality work, reasonably priced. 24-hour service. Ph. 487-9842. 29tf <b>Why hire FOUR</b> <b>contractors</b> <b>when ONE will do?</b> <b>HILLTOP, INC.</b> PLUMBING - HEATING - ELECTRICAL EXCAVATING - SEPTIC - DRAINFIELDS Do - It - Yourselfer Shop with advice. M thru F... 8:00 A.M. - 5:00 P.M. Sat. .... 8:00 A.M. - 12:00 P.M. <b>475-2949</b> 8316 Werkner Rd. Chelsea, MI 48118 31tf <b>WILKERSON</b> <b>MASONRY</b> RESIDENTIAL — COMMERCIAL BRICK — BLOCK — STONE FIREPLACES — CEMENT WORK REPAIRS <b>GLENN WILKERSON</b> Ph. 475-1583 -21-33 <b>Window Screens</b> <b>Repaired</b> Reasonable rates <b>Chelsea Hardware</b> 1105 S. Main Ph. 475-1121 30tf	<b>PRIVATE PARTY</b> Purchasers land contracts and mortgages. Even, only 475-1469. x21tf <b>LAND CONTRACTS PURCHASED</b> Any size, any property type. Courteous and reliable service. Call Stan Hentkowski, Huron Valley Creative Financing Services. 668-8595. 48tf <b>Bus. Opportunity 15</b> FOR THE BEST in home-care, housewares, personal-care, and multi-vitamin and mineral supplement products, call your local Amway distributor, 426-2557. x2-3 <b>PLEASANT WAY TO EARN</b> as an Amway distributor of nationally known products; in your own neighborhood, if you wish. We train you. Ph. 426-2557. x2-3 <b>Card of Thanks 16</b> <b>CARD OF THANKS</b> Many thanks to all our family, friends, Pastor Morris, Mr. Robert Murray, Masonic and OES brothers and sisters, Post 4076 Veterans of Foreign Wars, nurses and doctors at the hospital and everyone who remembered us while we were in the hospital. Your love, prayers, care, gifts and thoughtfulness will always be cherished. Sincerely, Guy and Gladys Weatherwax. <b>CASH FOR LAND CONTRACTS</b> Any type property, anywhere in Michigan. 24 Hours. Call Free 1-800-292-1550 First National Acceptance Co. <b>LET WANT ADS WORK FOR YOU</b>	<b>THANK YOU</b> The Chelsea Lions Club would like to express its sincere thanks to all of the wonderful members of the community who, through their generous donations, made our fifth annual White Cane fundraising drive an overwhelming success. Contributions received by the Lions Club go to support such activities as Leader Dogs for the Blind, Braille Transcribing, Welcome Home for the Blind retirement home, Special Olympics, vision testing and eye glasses for the underprivileged, sponsorship of local students to Girls' State, district sightmobile at the Chelsea Fair and white canes for blind persons. Despite the difficult economic times we are all experiencing, the citizens of Chelsea again demonstrated that they genuinely care about their fellow man. We are proud of our community for its unselfish support of our Lions programs and goals. David Scriven, President, Chelsea Lions Club

Subscribe to The Chelsea Standard

## Classified Ad Order Blank

Mail Your Copy to The Chelsea Standard  
P.O. Box 340, Chelsea, Mich. 48118

Name \_\_\_\_\_  
 Address \_\_\_\_\_  
 City \_\_\_\_\_  
 Ad is to appear week of \_\_\_\_\_ number of weeks.  
☐ The Chelsea Standard \$ \_\_\_\_\_  
 and or  
☐ The Dexter Leader \$ \_\_\_\_\_ ☐ Charge Ad  
☐ Total Enclosed \$ \_\_\_\_\_  
 Please run ad under the following Classification  
 (Please type your ad copy to avoid errors)

Ad Rates: 20 words or less - \$1.00 if paid when ad is placed. Over 20 words - 5¢ per word. Cards of Thanks and Memorials - 50 words for 2.50 if paid when ad is placed and 5¢ per word over 50.  
 In counting words, figures (such as road numbers) each count as 1 word. Each abbreviation counts as 1 word (you don't save money by abbreviating and you make your ad harder to read).

The Chelsea Standard

Phone (313) 475-1371

## Join the crew.

We're looking for some brand new faces at McDonald's. Faces that know how to smile when they're serving some of the best food around to some of the best customers around.

It'd be like to earn some extra money and have a nice, friendly, fun place to work.

Just stop by and pick up an application. We accept applications on Tuesdays from 2 p.m. to 4 p.m.

Nobody can do it like McDonald's can.



1535 S. Main, Chelsea  
Ph. 475-9520  
An equal opportunity employer.



**What's worse than having your \$45,000 house burn to the ground? Having an insurance policy that only pays \$25,000.**

Every year, inflation and rising property values increase the value of your home. And make it that much more expensive to replace should something happen to make it a total loss.

But if you have an Auto-Owners homeowners policy with Adjusted Value Endorsement, you're protected.

Because this modern Auto-Owners policy is designed to keep pace with rising values automatically. If you aren't covered by Auto-Owners... well, maybe you should be replacing your present insurance. Let us fill you in. Before you have to replace your home.



**Auto-Owners Insurance**

You can't find a better name for homeowners insurance

**SPRINGER AGENCY, INC.**

(formerly the Mayer Agency)

Phone 475-8689

Chelsea, Michigan



## Legal Notices 18

## MORTGAGE SALE

Default having been made in the terms and conditions of a certain mortgage made by Fred Hunt and Willis L. Hunt, husband and wife, of Ypsilanti, Michigan, to Great Lakes Federal Savings & Loan Association, a corporation organized under the Home Owners' Loan Act of 1933, of the United States of America, as amended, Mortgagee, dated the 2nd day of November, 1978, and recorded in the office of the Register of Deeds for the County of Washtenaw, and State of Michigan, on the 8th day of November, 1979, in Liber 1736 of Washtenaw County Records, at page 893, on which mortgage there is claimed to be due, at the date of this notice, for principal and interest, the sum of Sixty Two Thousand Nine Hundred Twenty and 20/100 (\$62,920.20) Dollars less an escrow balance in the sum of Ninety Five and 01/100 (\$95.01) Dollars;

And no suit or proceedings at law or in equity having been instituted to recover the debt secured by said mortgage or any part thereof;

Now, therefore, by virtue of the power of sale contained in said mortgage, and pursuant to the statute of the State of Michigan in such case made and provided, notice is hereby given that on the 18th day of June, 1981, at 10:00 o'clock in the forenoon, Local Time, said mortgage will be foreclosed by a sale at public auction, to the highest bidder, at the Huron Street entrance, to the Washtenaw County Building, in the City of Ann Arbor, Washtenaw County, Michigan, (that being the building where the Circuit Court for the County of Washtenaw is held), of the premises described in said mortgage, or so much thereof as may be necessary to pay the amount due, as aforesaid, on said mortgage, with the interest thereon at Twelve and 1/2% (12.5%) per cent per annum and all legal costs, charges and expenses, including the attorney fees allowed by law, and also any sum or sums which may be paid by the undersigned, necessary to protect its interest in the premises. Said premises are described as follows:

All of that certain piece or parcel of land situated in the Township of Northfield in the County of Washtenaw and State of Michigan, and described as follows, to-wit:

Land situated in the Township of Northfield, Washtenaw County, Michigan, described as follows:

Parcel I: Commencing at West 1/4 Post of Section 5; thence South 4° East 10 rods in the West line of Section; thence North 84° East 503 feet for a place of beginning; thence South 84° West 50 feet; thence North 4° East 50 feet; thence North 4° West 7 rods to the place of beginning, being a part of the Southwest 1/4 of Section 5, Northfield Township, Washtenaw County, Michigan.

Parcel II: A parcel of land located in Northfield Township, Washtenaw County, Michigan, and being more particularly described as follows:

West 1/4 post of Section; thence South 02° East 280.43 feet in the West line of Section; thence North 88° 30' East 320.5 feet to a place of beginning; thence North 88° 30' East 455 feet; thence South 17° 04' East 43.40 feet; thence South 72° 47' West 143.10 feet; thence North 18° 05' East 40 feet; thence North 142.79 feet; thence Southeast 59.33 feet in the West line of highway; thence South 75° 30' West 203.10 feet; thence North 88° 30' West 294 feet; thence North 02° West 178.33 feet to place of beginning, being part of the Southwest 1/4, Section 5, Town 1 South, Range 6 East.

Parcel III: Commencing at the Northwest one-quarter post of the Southwest one-quarter of Section 5, Town 1 South, Range 6 East, Northfield Township, Washtenaw County, Michigan, and thence South 2° 0' East 280.43 feet; thence North 88° 30' East 775.51 feet; thence South 17° 04' East along the highway 43.40 feet to the place of beginning; thence South 72° 47' West 143.10 feet; thence North 18° 05' East 40.0 feet; thence North 72° 47' East 142.79 feet; thence North 40.02 feet along the highway to the place of beginning, according to the survey of H. H. Atwell, C. E. dated September 1948.

Parcel IV: Commencing at the West quarter post of Section 5, Town 1 South, Range 6 East, thence South 2° 0' East along the West line of Section 5 a distance of 280.43 feet; thence North 88° 30' East 634.26 feet for a place of beginning; thence North 88° 30' East 165 feet; thence North 11° 0' West 48.53 feet; thence South 74° 13' West 164.35 feet; thence South 12° 8' East 13.60 feet to place of beginning, being a part of the Southwest quarter of Section 5, Town 1 South, Range 6 East, Township Northfield, County of Washtenaw, State of Michigan.

During the six months immediately following the sale, the property may be redeemed. Dated at Detroit, Michigan, Tuesday, May 12, 1981.

Michigan National Bank-Oakland

Southfield, Michigan, Mortgagee

Daniel B. McMahon

1400 West 14 Mile Road

Clawson, Michigan 48017

Attorney for Mortgagee

May 12-19-26-June 2-9

18

18

18

18

18

18

18

18

18

18

18

18

18

18

18

18

18

18

18

18

18

18

18

18

18

18

18

18

18

18

18

18

18

18

18

18

18

18

18

18

18

18

18

18

18

18

18

18

18

18

18

18

18

18

18

18

## Legal Notices 18

## MORTGAGE SALE

Default having been made in the terms and conditions of a certain mortgage made by Henry E. Isopi and Mildred Isopi, his wife of Dearborn, Wayne County, Michigan, Mortgagee, to Michigan National Bank-Oakland, a national banking association Mortgagee, dated the 15th day of September, 1978, and recorded in the office of the Register of Deeds for the County of Washtenaw and State of Michigan, on the 25th day of September 1978, in Liber 1674 of Washtenaw County Records, on page 71, on which mortgage there is claimed to be due, at the date of this notice, for principal and interest, the sum of Four Hundred Seventy Six Thousand Nine Hundred Ninety Eight and 20/100 (\$476,998.20) Dollars;

And no suit or proceedings at law or in equity having been instituted to recover the debt secured by said mortgage or any part thereof, Now, therefore, by virtue of the power of sale contained in said mortgage, and pursuant to the statute of the State of Michigan in such case made and provided, notice is hereby given that on Thursday the 25th of June, 1981 at 10:00 o'clock in the forenoon Local Time, said mortgage will be foreclosed by a sale at public auction, to the highest bidder, immediately inside the westerly entrance to the County Building, in the City of Ann Arbor, County of Washtenaw and State of Michigan, of the premises described in said mortgage, or so much thereof as may be necessary to pay the amount due, as aforesaid, on said mortgage, with the interest thereon at Ten per cent (10.00%) per annum and all legal costs, charges and expenses, including the attorney fees allowed by law, and also any sum or sums which may be paid by the undersigned, necessary to protect its interest in the premises. Which said premises are described as follows:

All of that certain piece or parcel of land situated in the Township of Northfield in the County of Washtenaw and State of Michigan, and described as follows, to-wit:

Land situated in the Township of Northfield, Washtenaw County, Michigan, described as follows:

Parcel I: Commencing at West 1/4 Post of Section 5; thence South 4° East 10 rods in the West line of Section; thence North 84° East 503 feet for a place of beginning; thence South 84° West 50 feet; thence North 4° East 50 feet; thence North 4° West 7 rods to the place of beginning, being a part of the Southwest 1/4 of Section 5, Northfield Township, Washtenaw County, Michigan.

Parcel II: A parcel of land located in Northfield Township, Washtenaw County, Michigan, and being more particularly described as follows:

West 1/4 post of Section; thence South 02° East 280.43 feet in the West line of Section; thence North 88° 30' East 320.5 feet to a place of beginning; thence North 88° 30' East 455 feet; thence South 17° 04' East 43.40 feet; thence South 72° 47' West 143.10 feet; thence North 18° 05' East 40 feet; thence North 142.79 feet; thence Southeast 59.33 feet in the West line of highway; thence South 75° 30' West 203.10 feet; thence North 88° 30' West 294 feet; thence North 02° West 178.33 feet to place of beginning, being part of the Southwest 1/4, Section 5, Town 1 South, Range 6 East.

Parcel III: Commencing at the Northwest one-quarter post of the Southwest one-quarter of Section 5, Town 1 South, Range 6 East, Northfield Township, Washtenaw County, Michigan, and thence South 2° 0' East 280.43 feet; thence North 88° 30' East 775.51 feet; thence South 17° 04' East along the highway 43.40 feet to the place of beginning; thence South 72° 47' West 143.10 feet; thence North 18° 05' East 40.0 feet; thence North 72° 47' East 142.79 feet; thence North 40.02 feet along the highway to the place of beginning, according to the survey of H. H. Atwell, C. E. dated September 1948.

Parcel IV: Commencing at the West quarter post of Section 5, Town 1 South, Range 6 East, thence South 2° 0' East along the West line of Section 5 a distance of 280.43 feet; thence North 88° 30' East 634.26 feet for a place of beginning; thence North 88° 30' East 165 feet; thence North 11° 0' West 48.53 feet; thence South 74° 13' West 164.35 feet; thence South 12° 8' East 13.60 feet to place of beginning, being a part of the Southwest quarter of Section 5, Town 1 South, Range 6 East, Township Northfield, County of Washtenaw, State of Michigan.

During the six months immediately following the sale, the property may be redeemed. Dated at Detroit, Michigan, Tuesday, May 12, 1981.

Michigan National Bank-Oakland

Southfield, Michigan, Mortgagee

Daniel B. McMahon

1400 West 14 Mile Road

Clawson, Michigan 48017

Attorney for Mortgagee

May 12-19-26-June 2-9

18

18

18

18

18

18

18

18

18

18

18

18

18

18

18

18

18

18

18

18

18

18

18

18

18

18

18

18

18

18

18

18

18

18

18

18

18

18

18

18

18

18

18

18

18

18

18

18

18

18

18

18

18

18

18

18

## Legal Notices 18

## MORTGAGE SALE

Default having been made in the terms and conditions of a certain mortgage made by John L. Chatterton and Joyce L. Chatterton, his wife of Chelsea, Washtenaw County, Michigan, Mortgagee, to STANDARD FEDERAL SAVINGS AND LOAN ASSOCIATION, a Federal Association, of Troy, Oakland County, Michigan, Mortgagee, dated the 14th day of October, 1980, and recorded in the office of the Register of Deeds for the County of Washtenaw and State of Michigan, on the 28th day of October, 1980, in Liber 1779 of Washtenaw County Records, on page 232, on which mortgage there is claimed to be due, at the date of this notice, for principal and interest, the sum of Three Thousand Twenty Three and 02/100 Dollars (\$3,023.02);

And no suit or proceedings at law or in equity having been instituted to recover the debt secured by said mortgage or any part thereof, Now, therefore, by virtue of the power of sale contained in said mortgage, and pursuant to the statute of the State of Michigan in such case made and provided, notice is hereby given that on Thursday the 18th day of July, 1981, at 10:00 o'clock A.M. Local Time, said mortgage will be foreclosed by a sale at public auction, to the highest bidder at the West entrance to the Washtenaw County Building in the City of Ann Arbor, Washtenaw County, Michigan (that being the building where the Circuit Court for the County of Washtenaw is held), of the premises described in said mortgage, or so much thereof as may be necessary to pay the amount due, as aforesaid, on said mortgage, with the interest thereon at Fourteen and one half per cent (14 1/2%) per annum and all legal costs, charges and expenses, including the attorney fees allowed by law, and also any sum or sums which may be paid by the undersigned, necessary to protect its interest in the premises. Which said premises are described as follows:

All that certain piece or parcel of land situated in the Township of Lyndon in the County of Washtenaw and State of Michigan, and described as follows, to-wit:

Commencing at the Southeast corner of the Northeast 1/4 of Section 19, Town 1 South, Range 4 East, thence North on the East section line 240 feet; thence West 165 feet, thence South parallel to the said East section line 240 feet; thence Easterly along the center of the road 165 feet to the place of beginning, being a part of the Northeast 1/4 of Section 19, Town 1 South, Range 3 East, Lyndon Township, Washtenaw County, Michigan.

During the six months immediately following the sale, the property may be redeemed. Dated at Troy, Michigan, May 27, 1981.

STANDARD FEDERAL SAVINGS

AND LOAN ASSOCIATION,

a Federal Association

Mortgagee

DYKEMA, GOSSETT, SPENCER,

GOODNOW & TRIGG

Attorneys for Mortgagee

June 2-9-16-23-30

18

18

18

18

18

18

18

18

18

18

18

18

18

18

18

18

18

18

18

18

18

18

18

18

18

18

18

18

18

18

18

18

18

18

18

18

18

18

18

18

18

18

18

18

18

18

18

18

18

18

18

18

18

18

18

18

18

18

18

18

18

18

18

18

18

18

18



## Kindergartners Send Thank-You Notes

Following their visits to the Haist farm and the Dottie-O-Dairy Ranch, kindergartners at both North and South Elementary schools sent the Haists and Van Rippers thank you notes for the kindness extended to them during the week of May 25.

The day of farm touring included visits with steers, chickens and sheep at the Haists and cows, horses, pigs and assorted wild and barnyard birds at the Van

Rippers. Working together for the past six years, the Haists and Van Rippers have entertained Chelsea's kindergartners for one day each spring prior to the close of the school year. And each year, hand-decorated construction paper cards, complete with the colorful barnyard art work of five-year-olds, are sent to the host families in appreciation for a fun-filled day of seeing, touching and learning.

## Call us for all your Solar needs.

Solar heat, Solar hot water,  
Window quilts - active and passive.

## Michigan Solar Systems

7128 Dexter Road Dexter, Mich. 48130

Ph. 426-2005

## NOW'S THE TIME!

Replace that old furnace that cost you in wasted fuel. Let us give you a free estimate on a new energy efficient heating system. Many models to choose from.

## TOM STEELE HEATING & COOLING

475-1222

AUTHORIZED WILLIAMSON DEALER

Gas - Oil - Electric - Heat Pumps

\$100 OFF WITH THIS ADV.

on any Williamson furnace or air conditioner installed by June 15, 1981.

## MATTOCK'S UPHOLSTERY

DEXTER

Announces  
Big  
Savings



SOFA ..... \$125 labor, plus fabric  
CHAIR ..... \$75 labor, plus fabric  
LOVE SEAT ..... \$100 labor, plus fabric  
RECLINERS ..... \$85 labor, plus fabric

In-Home Showing of Fabric  
Free Pick-Up and Delivery

Ph. 426-4521

## SALE! BANANA SPLIT 96¢

Dairy Queen



THURSDAY  
and FRIDAY  
JUNE 11-12

We've never had a more scrumptious sale. Fresh, tropical banana is on sale. Rich, thick chocolate. Juicy red strawberry. Tangy pineapple. Cool and creamy DAIRY QUEEN soft serve. They're all on sale because they're all part of our luscious Banana Split. Now only 96¢. At your participating DAIRY QUEEN store.

WE TREAT YOU RIGHT

CHELSEA DAIRY QUEEN - BRAZIER

911 E. Main St., Chelsea

Ph. 475-2677

## Sluggers of the Week



ROSS MURPHY AND TIM WHITESALL are this week's featured baseball players. Murphy, left, is a junior second baseman and designated hitter with outstanding speed and exceptional baseball instinct, according to Coach Wayne Welton. Murphy is a fine lead-off hitter, "a real quality player." In addition to baseball, Murphy is

a member of the varsity football team. Whitesall, a junior, plays the positions of catcher and outfielder. According to Wayne Welton, Whitesall "is the most enthusiastic player on the team and has a fine attitude." Like his pictured comrade, Whitesall also plays on the varsity football team.

## Rita Wilson-Howard Listed in Who's Who

Rita Wilson-Howard of Chelsea will be featured in the 29th consecutive edition of "Who's Who in Baton Twirling," a 488-page volume compiling biographies and pictures of the most prominent participants in the specialized art/sport of baton twirling.

The editors of "Who's Who in Baton Twirling," in conjunction with the editors of Drum Major magazine, have published the book as a sound biographical tool that can be used effectively in public and school libraries, offices and homes. In addition to heralding America's baton twirling champions, authorities in the field of pageantry have incorporated the highlight records and

facts of the history of twirling in this book.

Baton twirling originated from the ceremonial dances and celebrations of the natives of Siam, Arabia and the Samoan Islands who would manipulate their knives and spears much as the majorettes and drum majors of today. Until the 1930's, baton twirling was practiced almost exclusively by men. Today it is a field involving both men and women and ranking only second to "scouting" in youth participation.

Thousands of the world's finest baton twirlers will gather at Notre Dame University, South Bend, Ind., from July 28 through Aug. 1 for 38 national and world championship contests. This event is known as "America's Youth on Parade."

Rita Wilson-Howard is the wife



RITA WILSON-HOWARD

of Charles P. Howard and the mother of three sons. She is the instructor of students at the Chelsea Charms Baton Studio.

Pittsburgh, Pa., Thanksgiving day, 1888. In a narrow iron building, Arthur Vining Davis watched as the first ingot of commercial aluminum was poured. No longer was the metal an expensive novelty. But how could he convince businessmen of aluminum's practical applications? Davis decided to show them—by casting the world's first aluminum teakettle. When he presented it to cookware manufacturers, they were impressed. But they didn't want ingots. They wanted aluminum teakettles.

Please Notify Us  
In Advance of  
Any Change in Address

## RESIDENTIAL CONSTRUCTION and REMODELING

Specializing in  
CUSTOM-BUILT  
ENERGY EFFICIENT HOMES

Free Estimates

ib V. Jensen & Sons

LICENSED BUILDERS

378 Spring Lake Dr., Chelsea

Ph. 475-1820

The Chelsea Standard, Tuesday, June 9, 1981

17

## Senior Citizen Nutrition Program MENU and ACTIVITIES

Week of June 9 - 18

Tuesday—Roast turkey roll with gravy, mashed potatoes, broccoli, tomato aspic, bread and butter, peach crisp. Basket weaving.

Wednesday—Cheese fondue, zucchini and tomato bake, tossed salad, wheat bread with butter, apricots. Bingo.

Thursday—Roast pork with gravy, sauerkraut, parsley whipped potatoes, wheat bread, pineapple chunks. Exercise.

Friday—Spanish rice with beef, asparagus, calico coleslaw, roll, strawberries.

Monday—Stuffed cabbage rolls, buttered carrots, tossed salad, bread and butter, pears. Gardening, 11 a.m.

Tuesday—Bar-b-que chicken, hot potato salad, relishes, wheat bread with butter, apple cobbler. Basket weaving.

Michigan State News, which operates independently of university control is recognized as the largest student daily newspaper in the world in terms of circulation, advertising revenue, pages per day and size of staff.

## LITTLE ROOSTER RESTAURANT & LOUNGE

PHONE 426-8668

11485 North Territorial Rd. (Corner Dexter Townhall Rd.)

LITTLE ROOSTER

You have something to crow about!



### TUESDAY SPECIAL CHICKEN DINNER

with cole slaw, ranch fries

\$5.45 hrs. 4-8 p.m.

### WEDNESDAY NIGHT SPECIAL ITALIAN NIGHT

Italian Dinner for Two plus 1/2 litre of wine

\$10.95 Hours: 4 to 8 p.m.

Thursday Spec. hours 4 to 8 p.m.

Spaghetti Dinner . . . All you can eat \$4.50

FRIDAY SPECIAL

Ocean Perch Dinner . . . \$5.95

All You Can Eat. Hours 4 to 8 p.m.

Dance to "Country Pleasure"

Music, 9:30 p.m. to 1:30 a.m.

Saturday Special

10-oz. New York Sirloin . . . \$7.95

with tossed salad and ranch fries

"COUNTRY PLEASURE"

for your dancing! from 9:30 to 1:30

SUNDAY SPECIAL from 2 to 10 p.m.

New Zealand Lobster Tail

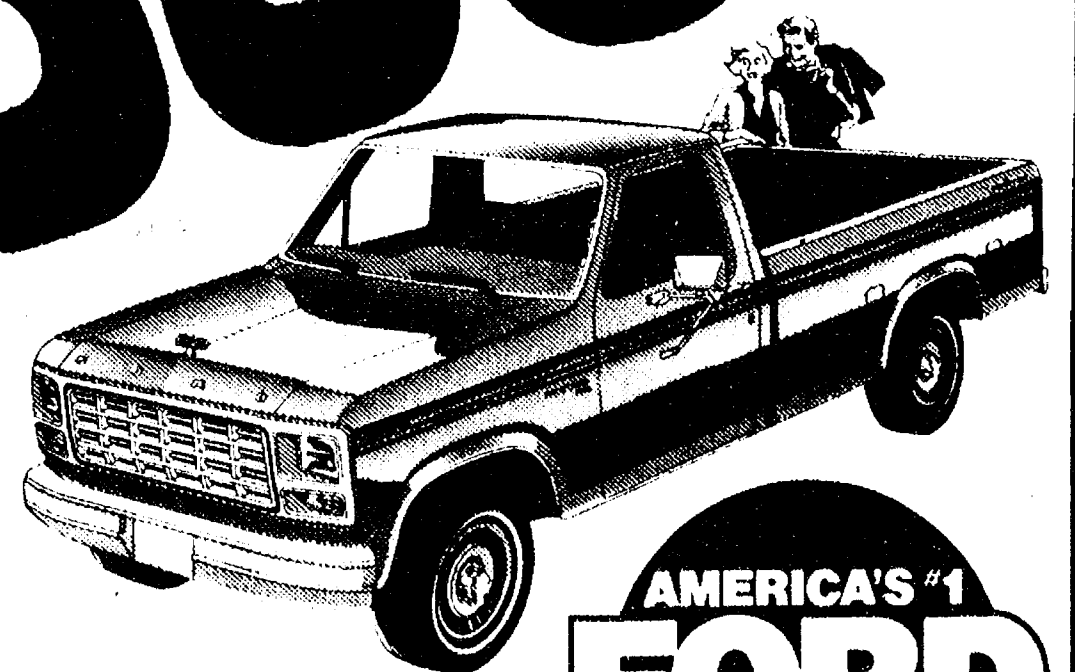
and 5-oz. Sirloin Steak . . . \$12.95

with baked potato and tossed salad. Hours: 4 to 8 p.m.

## PALMER FORD'S 18th ANNUAL

## PICK-UP ONLY SALE

\$5395



AMERICA'S #1  
FORD  
TRUCK BUY

Come  
To Chelsea  
and  
SAVE  
MONEY!

\$5395 for a brand new 1981 Ford Pick-up with all standard equipment. (Only 5 left at this price.) 46 on sale at savings from \$1,128 to \$1,927 off sticker prices. We doubt that you will ever be able to buy a new truck for less.

HURRY! SALE ENDS JUNE 27th

MICHIGAN'S OLDEST FORD DEALER, SINCE 1912



CHELSEA

Mon., Tues., Thurs., 8:30-9; Wed. & Fri., 8:30-6.

475-1301

## THE WHISTLE STOP PIZZA PARLOR

121 E. MICHIGAN AVE., GRASS LAKE  
PHONE (517) 522-8441

HOURS:

Monday thru Thursday 11 a.m. to 11 p.m.

Friday and Saturday . . . 11 a.m. to 1 a.m.

Sunday . . . . . 4 p.m. to 11 p.m.

VALUABLE COUPON

Buy Any Pizza  
Get a Second,  
Identical Pizza

at 1/2 PRICE

(Offer Expires June 14, 1981)

NEW OWNERS

Bob Putnam & Tim Humphrey



## + AREA DEATHS +

**Lydia E. Waechter**

Dexter Woman's Sister Dies Friday in Chelsea  
Lydia Edna Waechter of 114 N. Main, Chelsea, died Friday at the age of 75.

She was born May 15, 1906 in Detroit, the daughter of Curtis and Rose (Bauer) Waechter. She was a member of St. Paul's United Church of Christ of Taylor.

She is survived by two brothers, Harold E. Waechter of Taylor, and Arthur E. Waechter of Maybee. She is also survived by seven sisters: Mrs. Mildred Schellenburg of Dearborn, Mrs. William (Edna) Krueger of Romulus, Mrs. Chester (Loretta) Hoffman of Ida, Mrs. Helen Drueger of Romulus, Mrs. Martin (Violet) Ruhl, Sr. of Dexter, Mrs. George (Dorothy) Lindemann of Waltz and Mrs. Earl (Doris) Lindemann of Belleville, and several nieces and nephews.

Funeral services will be held Tuesday, June 9 at 1 p.m. at the Hosmer Funeral Home with the Rev. Alvin Kauffman of St. Paul's Church of Christ, Taylor, officiating. Burial will be at Michigan Memorial Park Cemetery in Flat Rock. Memorials may be made to St. Paul's church.

**Thomas R. Lavey**

Gregory Man Had Retired From State Highway Dept.  
Thomas Ray Lavey, 215 Stockbridge St., Gregory, died Tuesday, May 26 at his home. He was 87.

He was born June 16, 1893 in Dexter, the son of Patrick and Susan Harris Lavey. He married Jessie I. Resico on Sept. 3, 1919. Mr. Lavey had been a member of St. Mary's church, Pinckney, was employed by the State Highway Department, was a lifelong resident of Gregory and a farmer for many years.

He is survived by his widow, Jessie; one son, Patrick J. of Jackson; two daughters, Mrs. Walter (Lois) Barbour of Stockbridge and Mrs. Robert (Nadji) Prater of Chelsea; nine grandchildren; seven great-grandchildren; and, two brothers, Lee Lavey of Pinckney and Leo Lavey of Jackson.

Funeral services were held Friday, May 29 at 11 a.m. at St. Mary's church, Pinckney with the Rev. Hugh Conklin officiating. Interment followed in the Parish Cemetery.

**Earl Arthur Rice**

Detroit Abrasives Founder Dies in Ann Arbor Hospital  
Earl Arthur Rice, 11896 Amherst Ct., Plymouth, died Wednesday, June 3 at St. Joseph Mercy Hospital. He was 88.

He was born Jan. 28, 1893 in Grand Rapids, the son of Noah and Elizabeth (Haney) Rice. On June 7, 1920 he married Carrie Durham in Nashville, Tenn. She survives.

Mr. Rice founded Detroit Abrasives Co. and E. A. Rice Co. He served in the 329th Field Artillery Battery F during World War I.

Survivors, in addition to his widow, Carrie, include one daughter, Mrs. William (Marlyn) Chandler of Chelsea; three granddaughters, Cynthia Chandler Bock of Rochester, N. Y., Mary Beth Chandler of Aurora, Colo., and Carolyn Kay Chandler of Chelsea.

Funeral services were held Saturday, June 6 at 1 p.m. at the Burghardt-Cole Chelsea Funeral Chapel with the Rev. Ira Wood officiating. Interment followed in Oak Grove Cemetery.

Memorial contributions may be made in Mr. Rice's name to the Michigan Heart Association.

**Kathryn Del Prete**

North Lake Resident Dies Saturday at Home  
Kathryn Del Prete, 13936 Aberdeen, North Lake, Gregory, died Saturday, June 6 at her home. She was 59.

She was born May 3, 1922 in Huntington, Ind., the daughter of Melvin M. and Ica (Ormsby) Reynolds.

Mrs. Del Prete is survived by her husband, Thomas; one daughter, Mrs. Mark (Kristy Marie) Rickelmann of Dexter; one granddaughter, Shelly Marie; three brothers, William Donald Reynolds of North Lake, Max J. Reynolds of Orange, Calif. and Gerald Reynolds of Bakersfield, Calif.; two sisters, Mrs. Alice B. Schneider of Dexter and Mrs. Grover (Lois) Bush of Taft, Calif.; and, several nieces and nephews.

Mrs. Del Prete was a member of the Inverness Country Club. Funeral services will be held at 1 p.m. Tuesday, June 9 at the Staffan Funeral Home with the Rev. John Elliot of North Lake United Methodist church officiating. Interment will follow in North Lake Cemetery.

Memorial contributions to the American Lung Association or the Michigan Heart Association would be appreciated.

**Lionel E. Vickers**

Active Masonic Member Dies Tuesday at Age 84  
Lionel Earl Vickers, 668 Washington St., died Tuesday, June 2 at his home. He was 84.

He was born April 14, 1897 in Lima township, in what is now the home of Duane Luick. He was the oldest son of Henry and Florence (Brown) Vickers.

On Jan. 10, 1923 he married Emma Perry at Crosswell; she preceded him in death on April 27, 1968. On Nov. 21, 1970 he married Mary Ethel Towler of Saline; she survives.

Mr. Vickers was the oldest member of the First Congregational church of Chelsea at the time of his death. He was a life member and Past Master of Olive Lodge No. 156 F&AM, receiving his 60-year pin in November 1978.

Mr. Vickers was a life member and Past High Priest of Olive Lodge Chapter No. 140 RAM and a life member and Past Worthy Patron of Olive Chapter No. 108 OES. He was a life member of Ann Arbor Council No. 86 R and SM, a member of Ann Arbor Commandery No. 13 Knights Templar, a member of the Moslem Temple Shrine AAOONS of Detroit, and a member of the Grand Council of High Priesthood of Michigan.

He had been a member of the High Twelve Club No. 96 of Michigan, the Mallet Club of Michigan, Ann Arbor Shrine No. 54 WJSJ, the Washtenaw County Farm Bureau, the Ancient Order of Gleaners, the Modern Woodman of America, the American Association of Retired Persons and the Senior Citizens of Chelsea.

Mr. Vickers graduated from Chelsea High school in 1915. He was formerly employed at Lewis Spring and Axle Co., Michigan Portland Cement Co., Chelsea Screw Co., New York Central Railroad, the Gudeman Co., Chelsea Public Schools and K & E Screw Co. of Dexter. He also farmed for several years.

Survivors, in addition to his widow, Mary, include one daughter, Doris Ann Bell of Pinckney; four grandchildren, Douglas, Jeanine, Diann and Daniel Bell; one great-granddaughter; two step great-grandchildren; several nieces, nephews and friends.

Mr. Vickers was preceded in death by his grandson, John Bell in 1960, and his brother, Stanley in 1976.

An Eastern Star service was held at 7 p.m. and a Masonic Lodge service was held at 7:30 p.m. Wednesday, June 3 at the Burghardt-Cole Chelsea Funeral Chapel. The funeral service was held Thursday, June 4 at 2 p.m. at the First Congregational church with the Rev. Carl Schwarm officiating. Interment followed in Oak Grove Cemetery.

Memorial contributions may be made to the First Congregational church of Chelsea, the American Cancer Society or Masonic Lodge No. 156.

Michigan State University's campus includes a wide diversity of native woodlands and wetlands available for teaching and research activities, including 445 acres formally designated natural areas subject to minimal disturbance.

**Blanche Barkley**

Sylvan Township Resident Dies Following Brief Illness  
Blanche H. Barkley, 3741 Silver Fox Dr., died Tuesday, June 2 following a brief illness. She was 86.

She was born March 1, 1895 in Chicago, Ill., the daughter of John and Ida Damon. She married Hugh C. Barkley in 1917 in Illinois. He preceded her in death in 1930.

Mrs. Barkley had been a resident of Chelsea for more than 50 years. She was a member of the VFW and American Legion Auxiliaries.

Survivors include one son, James Barkley of Chelsea; two daughters, Mrs. William (Jean) Sly of Taylor and Mrs. Warren (Alice) Leisinger of Chelsea; one sister, Mrs. Russell (Vivian) Atkinson of California; 14 grandchildren; and, 25 great-grandchildren.

One son, James Barkley, preceded her in death on June 10, 1960.

Funeral services were held Friday, June 5 at 1 p.m. at the Burghardt-Cole Chelsea Funeral Chapel with the Rev. Carl Schwarm officiating. Interment followed in Oak Grove Cemetery. Memorial contributions may be made in Mrs. Barkley's name to the Chelsea Senior Citizens.

**Robert J. Allan**

Dies Friday of Injuries in Motor Vehicle Crash

Robert J. Allan, 17251 Cavanaugh Lake Rd., died Friday, June 5, the result of a motor vehicle accident. He was 31.

He was born Aug. 28, 1949 in Ann Arbor, the son of James and Jane (Blair) Allan. He had been a Chelsea area resident all his life.

Mr. Allan was formerly employed at the Dana Corp. plant in Chelsea. He was a veteran of the U.S. Army.

He is survived by his parents, Mr. and Mrs. James Allan of Tavares, Fla.; one sister, Ms. Sharon Allan of Ann Arbor; one brother, William Allan of Boca Raton, Fla.; his grandmother, Mrs. Flora Blair of Mt. Morris; and three nephews and one niece.

Memorial services were held Monday, June 8 at 1 p.m. at the Burghardt-Cole Chelsea Funeral Chapel with the Rev. Marvin McCallum officiating.

Kellogg Center for Continuing Education at Michigan State University was the nation's first major facility to be built for adult residential education and the first to be financially assisted by the W. K. Kellogg Foundation.

**Dr. Hope Lowry**

Former Adrian Professor Dies at Chelsea Hospital  
Dr. Hope Lowry, 805 W. Middle St. and formerly of Adrian, died Wednesday, June 3 at Chelsea Community Hospital. She was 84.

She was born June 21, 1896 in Anaconda, Mont., the daughter of the Rev. Philip and Cordelia Ann (Wrench) Lowry. Both her grandfather and father, as well as her brother, were Methodist ministers.

She had been a resident of Chelsea since 1973. Having never married, Dr. Lowry is survived by one niece, Miss Dorothy Desmond of Detroit.

Dr. Lowry graduated from Albion College in 1917 and served as a principal in the Coleman School District. For 44 years, she was a professor of language at Adrian College where she retired as department chairman in 1964. In addition, she taught in the Summer College of Albion College at Bay View for many years.

Dr. Lowry also studied during the summer at various colleges and universities including the University of Michigan; Columbia University; the Sorbonne, Paris, France; the University of Iowa; and, the University of Aix-Marseilles, Cannes, France.

Dr. Lowry was an active member of the First United Methodist church of Chelsea and was, at the time of her death, Mission Co-ordinator for Global Concerns for the United Methodist Women's Sarah Circle. She was a member of the Order of the Eastern Star of Adrian, the American Association of University Women, National Association of American College Professors, a founding member of the Lenawee County Humane Society, a member of Pi Delta Theta and French Honorary. Lowry Residence Hall on the Adrian College campus was named in her honor. In addition, the College bestowed an honorary doctor of literature degree upon her.

Funeral services were held Saturday, June 6 at the Chapel of the United Methodist Retirement Home, Chelsea. Interment followed in Oak Grove Cemetery. Arrangements were made by the Staffan Funeral Home, Chelsea.

Philadelphia carpenters struck unsuccessfully in May 1971 for a 10-hour day and additional pay for overtime. According to "Brief History of the American Labor Movement," a publication of the U. S. Department of Labor, this was the first recorded strike of workers in the building trades.

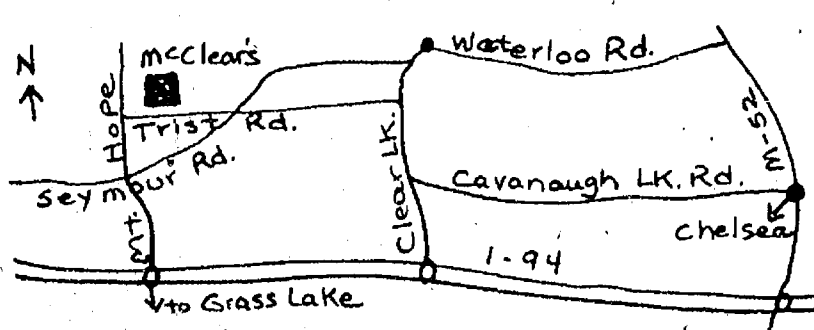


**NORTH SCHOOL SPELLERS:** The four North school fifth grade classes chose their top 10 spellers. Thereafter, the 40 students competed in front of their fifth grade audience for top spelling honors, Thursday, June 4. The top six were, back row, left to right, Peter Young, Kenyon Vosters, Karen Paulsell, Ann Brosnan, Kasey Anderson and Owen Wilcox. Kenyon Vosters was runner-up while Peter Young was champion.



**CREATIVE BOOK CONTEST WINNERS:** Announced last week were the names of Mrs. Clark's fifth grade creative book contest winners at North school. Pictured above are winners, front row, left to right, Robert Thorne took first place with his book, "Magie Leprechaun," while David Teare and Kenyon Vosters tied for second with their creations, "Trucker's Life" and "Talking Frog." Honorable mention went to, second row, left to right, Michaela Scripter, Eddie Fleischmann, Ted Lewis, Eric Bauer, third row, left to right, Owen Wilcox, Jennifer Rossi, Kelly Stump, Laura Walton and Jamie Hoffman. All winners won treats at McDonald's from their teacher.

It's a beautiful drive to McClear's:



**McClea's Evergreen Nursery**  
11362 TRIST RD., GRASS LAKE (517) 522-5177  
Open Tues.-Sun., 9-6. Closed Mon.

Time to spruce up for outdoor living . . .

## Great New LATEX REDWOOD STAIN



Revitalizes, restores the natural beauty of weathered redwood  
Gives a lasting deep-down redwood color to new wood  
Goes on fast and easy — use brush, roller, spray  
Soap and water clean-up

ON SALE NOW...

- Spruce up...  
• fences  
• porches  
• picnic tables  
• wood lawn furniture

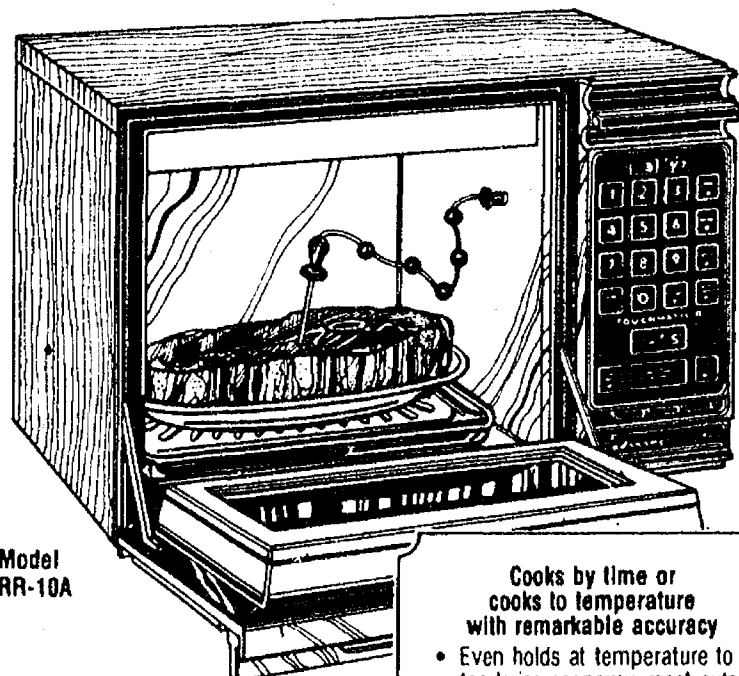
only **\$3.99** per gallon  
Regular \$4.85

**GAMBLES**  
110 N. Main, Chelsea 475-7472

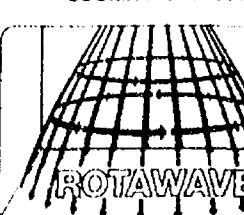
Open Daily  
8:30 to 5:30  
Open Friday  
Til 8:30

## JUNE SPECIAL

\$30 Instant Cash  
Rebate on . . .  
**Amana Touchmatic II Radarange**



Model RR-10A



A rotating shower of power that cooks better — and cooks most foods faster than ever before, with no turning.

- Cooks by time or cooks to temperature with remarkable accuracy
- Even holds at temperature to tenderness economy meat cuts.
  - A wide range of Cookmatic™ power levels because different foods cook best at different speeds.
  - 700 watts cooking power at "Full Power"
  - Advanced memory. Touchmatic II remembers an amazing combination of defrost and cook programs.
  - Even remembers time of day.
  - Automatic start time.
  - Separate kitchen timer.
  - Stainless steel interior.

**\$558.00** Sale Price  
Less **30.00** Instant Cash in June  
**\$528.00** Net Invoice Price  
Lowest Price EVER on this model!

Amana Radarange

Low Calorie Cookbook

200 pages of smart recipes that make sense, even if you aren't on a diet.

\$15.00 Value — Only \$7.50

6 1/2" Browning Skillet

Perfect for frying, searing and more.

\$15.00 Value — Only \$7.50

COUNTRY COOKER

for slow cooked goodness

\$20.00 Value — Only \$10.00

COFFEE MAKER

Fresh brewed taste . . . without coffee waste

\$20.00 Value — Only \$10.00

\$15.00 Value — Only \$7.50

TOUCHMATIC CANDYMAKER

the Fastest, Easiest Way to make candy

Buy any Amana Radarange and receive 1 of these accessories free!

1 / 2 Price Specials!

**HEYDLAUFF'S**  
113 N. Main St., Chelsea Ph. 475-1221